

LINEA ROSSA LLC

GLR-U96 & GLR-U97 WINDOW WALL SYSTEMS (HVHZ)(IMPACT)

LINEA ROSSA®
WINDOWS & DOORS

1850 NW. 84TH AVE., STE. 114
DORAL, FL 33126
PH: (305)815-8797

INSTALLATION NOTES:

- SEE SHEET 9 FOR ANCHOR TYPE REQUIREMENTS, MINIMUM EMBEDMENT, AND MINIMUM EDGE DISTANCES. ALL ANCHOR REQUIREMENTS MUST BE ADHERED TO. ANY DEVIATIONS FROM ANCHOR REQUIREMENTS REQUIRES SEPARATE EVALUATION AND APPROVAL.
- ONE (1) INSTALLATION ANCHOR IS REQUIRED AT EACH ANCHOR LOCATION SHOWN.
- THE NUMBER OF INSTALLATION ANCHORS DEPICTED IS THE MINIMUM NUMBER OF ANCHORS TO BE USED FOR PRODUCT INSTALLATION.
- INSTALL INDIVIDUAL INSTALLATION ANCHORS WITHIN A TOLERANCE OF ±1/2 INCH OF THE DEPICTED LOCATION IN THE ANCHOR LAYOUT DETAIL (I.E., WITHOUT CONSIDERATION OF TOLERANCES). TOLERANCES ARE NOT CUMULATIVE FROM ONE INSTALLATION ANCHOR TO THE NEXT.
- SHIM AS REQUIRED AT EACH INSTALLATION ANCHOR WITH LOAD BEARING SHIM(S). MAXIMUM ALLOWABLE SHIM STACK TO BE 1/2 INCH. SHIM WHERE SPACE OF 1/16 INCH OR GREATER OCCURS. SHIM(S) SHALL BE CONSTRUCTED OF HIGH DENSITY PLASTIC OR BETTER.
- MINIMUM EMBEDMENT AND EDGE DISTANCE EXCLUDE WALL FINISHES, INCLUDING BUT NOT LIMITED TO STUCCO, FOAM, BRICK VENEER, AND SIDING.
- INSTALLATION ANCHORS AND ASSOCIATED HARDWARE MUST BE MADE OF CORROSION RESISTANT MATERIAL OR HAVE A CORROSION RESISTANT COATING.
- FOR HOLLOW BLOCK AND GROUT FILLED BLOCK, DO NOT INSTALL INSTALLATION ANCHORS INTO MORTAR JOINTS. EDGE DISTANCE IS MEASURED FROM FREE EDGE OF BLOCK OR EDGE OF MORTAR JOINT INTO FACE SHELL OF BLOCK.
- INSTALLATION ANCHORS SHALL BE INSTALLED IN ACCORDANCE WITH ANCHOR MANUFACTURER'S INSTALLATION INSTRUCTIONS, AND ANCHORS SHALL NOT BE USED IN SUBSTRATES WITH STRENGTHS LESS THAN THE MINIMUM STRENGTH SPECIFIED BY THE ANCHOR MANUFACTURER.
- INSTALLATION ANCHOR CAPACITIES FOR PRODUCTS HEREIN ARE BASED ON SUBSTRATE MATERIALS WITH THE FOLLOWING PROPERTIES:
 - WOOD - MINIMUM SPECIFIC GRAVITY OF 0.55.
 - CONCRETE - MINIMUM COMPRESSIVE STRENGTH OF 3000 PSI.
 - MASONRY - CMU UNIT STRENGTH CONFORMS TO ASTM C-90, WITH MIN. COMPRESSIVE STRENGTH OF 2000 PSI AND GROUT CONFORMS TO ASTM C 476, MIN. GROUT COMPRESSIVE STRENGTH OF 2000 PSI.
 - STEEL - MINIMUM YIELD STRENGTH OF 36 KSI. MINIMUM 16 GA. WALL THICKNESS.
 - ALUMINUM - MINIMUM 1/8 INCH THICK 6063-T5 ALUMINUM.

GENERAL NOTES:

- THE PRODUCT SHOWN HEREIN IS DESIGNED AND MANUFACTURED TO COMPLY WITH THE CURRENT FLORIDA BUILDING CODE (FBC), **INCLUDING** HVHZ AND HAS BEEN EVALUATED ACCORDING TO THE FOLLOWING:
 - TAS 201-94
 - TAS 202-94
 - TAS 203-94
 - AAMA 501-15
- ADEQUACY OF THE EXISTING STRUCTURAL CONCRETE/MASONRY, 2X FRAMING AND METAL STUD FRAMING AS A MAIN WIND FORCE RESISTING SYSTEM CAPABLE OF WITHSTANDING AND TRANSFERRING APPLIED PRODUCT LOADS TO THE FOUNDATION IS THE RESPONSIBILITY OF THE ENGINEER OR ARCHITECT OF RECORD FOR THE PROJECT OF INSTALLATION.
- 1X AND 2X BUCKS (WHEN USED) SHALL BE DESIGNED AND ANCHORED TO PROPERLY TRANSFER ALL LOADS TO THE STRUCTURE. BUCK DESIGN AND INSTALLATION IS THE RESPONSIBILITY OF THE ENGINEER OR ARCHITECT OF RECORD FOR THE PROJECT OF INSTALLATION.
- THE INSTALLATION DETAILS DESCRIBED HEREIN ARE GENERIC AND MAY NOT REFLECT ACTUAL CONDITIONS FOR A SPECIFIC SITE. IF SITE CONDITIONS CAUSE INSTALLATION TO DEVIATE FROM THE REQUIREMENTS DETAILED HEREIN, A LICENSED ENGINEER OR ARCHITECT SHALL PREPARE SITE SPECIFIC DOCUMENTS FOR USE WITH THIS DOCUMENT.
- APPROVED IMPACT PROTECTIVE SYSTEM **IS NOT REQUIRED** ON THIS PRODUCT IN AREAS REQUIRING IMPACT RESISTANCE. SEE SHEET 4 FOR GLAZING DETAIL. GLASS SHALL MEET THE REQUIREMENTS OF ASTM E 1300.
- GLASS MEETS THE REQUIREMENTS OF ASTM E 1300. SEE SHEET 4 FOR GLAZING DETAIL.
- FRAME MATERIAL: ALUMINUM 6005-T5/ALUMINUM 6063-T6
- ALL STRUCTURAL MATERIALS & DISSIMILAR METALS SHALL BE PROTECTED, TREATED, PAINTED, COATED, AND/OR ISOLATED AS REQUIRED IN THE APPLICABLE SECTIONS OF THE CURRENT FLORIDA BUILDING CODE AND REFERENCED DESIGN SPECIFICATIONS.

TABLE OF CONTENTS	
SHEET	SHEET DESCRIPTION
1	INSTALLATION & GENERAL NOTES
2	ELEVATION & ANCHOR LAYOUT
3	ELEVATION, ANCHOR LAYOUT, & ALTERNATE SHAPES
4	GLAZING DETAIL & GLASS LOAD TABLES
5	JAMBS DESIGN PRESSURE TABLES
6	MULLION DESIGN PRESSURE TABLES
7	CORNER MULLION DESIGN PRESSURE TABLES
8	TYPE A & B ANCHOR TABLES
9	TYPE C & D ANCHOR TABLES
10	VERTICAL SECTIONS
11	VERTICAL SECTIONS
12	HORIZONTAL SECTIONS
13	HORIZONTAL SECTIONS
14	HORIZONTAL SECTIONS
15	BILL OF MATERIALS & COMPONENTS
16	COMPONENTS

INSTRUCTIONS FOR USE:

- DETERMINE DESIGN WIND LOAD REQUIREMENTS BASED ON WIND VELOCITY, BLDG, HEIGHT, WIND ZONE USING APPLICABLE ASCE 7 STANDARD.
- SEE CHART ON SHEET 4 FOR DESIGN LOAD CAPACITY OF DESIRED GLASS SIZE. GLASS SELECTION SHALL BE IN ACCORDANCE WITH ASTM E1300.
- CHECK MULLION CAPACITY FOR A GIVEN SPACING AND HEIGHT USING CHARTS ON SHEETS 5 THROUGH 7, THE CAPACITY SHOULD EXCEED THE DESIGN LOAD.
- USING CHARTS ON SHEET 8 & 9 SELECT ANCHOR OPTION WITH DESIGN RATING MORE THAN DESIGN LOAD SPECIFIED IN STEP 1 ABOVE.
- THE LOWEST VALUE RESULTING FROM STEP 2, 3, AND 4 SHALL APPLY TO ENTIRE SYSTEM.

TITLE: GLR-U96 & GLR-U97
WINDOW WALL SYSTEMS
(HVHZ)(IMPACT)

INSTALLATION & GENERAL NOTES

PREPARED BY: BUILDING DROPS, INC.
398 E. DANIA BEACH BLVD., STE. 338
DANIA BEACH, FL 33004
PH: (954)399-8478
FAX: (954)744-4738
WEB: www.buildingdrops.com



REMARKS	BY	DATE

THE INSTALLATION DETAILS DESCRIBED HEREIN ARE GENERIC AND MAY NOT REFLECT ACTUAL CONDITIONS FOR A SPECIFIC SITE. IF SITE CONDITIONS CAUSE INSTALLATION TO DEVIATE FROM THE REQUIREMENTS DETAILED HEREIN, A LICENSED ENGINEER OR ARCHITECT SHALL PREPARE SITE SPECIFIC DOCUMENTS FOR USE WITH THIS DOCUMENT.

HERMES F. NORERO P.E.
FLORIDA P. E. NO. 73778
398 E. DANIA BEACH BLVD., STE. 338
DANIA BEACH, FL 33004
FBPE CERT. OF AUTHORIZATION NO. 29578

FL41922

DATE: 10.06.2023

DWG. BY: SH
CHK. BY: HFN

SCALE: NTS

DWG. #: LRA022

SHEET: 1 OF 16

1

TITLE: GLR-U96 & GLR-U97
WINDOW WALL SYSTEMS
(HVHZ)(IMPACT)
ELEVATION, ANCHOR LAYOUT,
& ALTERNATE SHAPES

PREPARED BY: BUILDING DROPS, INC.
398 E. DANIA BEACH BLVD., STE. 338
DANIA BEACH, FL 33004
PH: (954)399-8478
FAX: (954)744-4738
WEB: www.buildingdrops.com



REMARKS	BY	DATE

THE INSTALLATION DETAILS DESCRIBED HEREIN ARE GENERIC AND MAY NOT REFLECT ACTUAL CONDITIONS FOR A SPECIFIC SITE. IF SITE CONDITIONS CAUSE INSTALLATION TO DEVIATE FROM THE REQUIREMENTS DETAILED HEREIN, A LICENSED ENGINEER OR ARCHITECT SHALL PREPARE SITE SPECIFIC DOCUMENTS FOR USE WITH THIS DOCUMENT.

HERMES F. NORERO P.E.
FLORIDA P. E. NO. 73778
398 E. DANIA BEACH BLVD., STE. 338
DANIA BEACH, FL 33004
FBPE CERT. OF AUTHORIZATION NO. 29578

FL41922

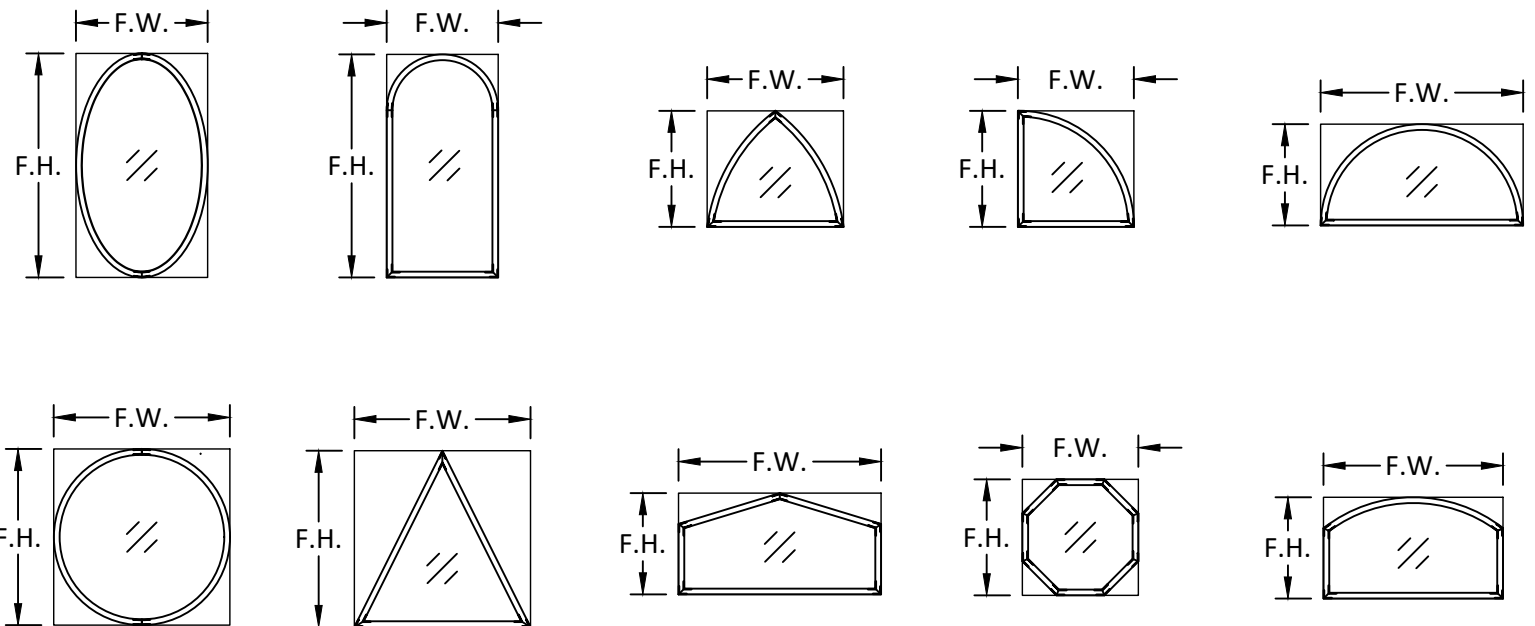
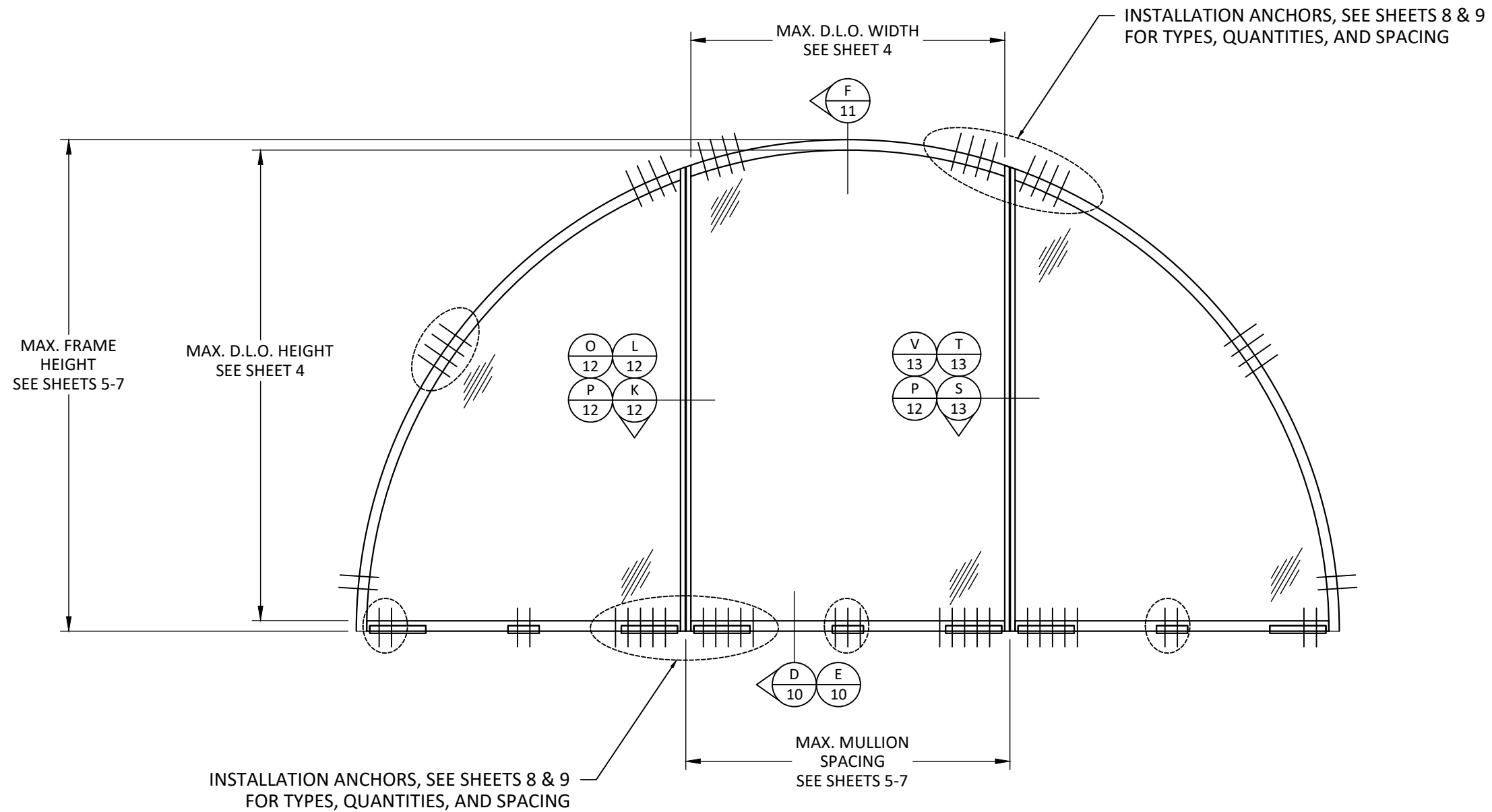
DATE: 10.06.2023

DWG. BY: SH CHK. BY: HFN

SCALE: NTS

DWG. #: LRA022

SHEET: 3 OF 16



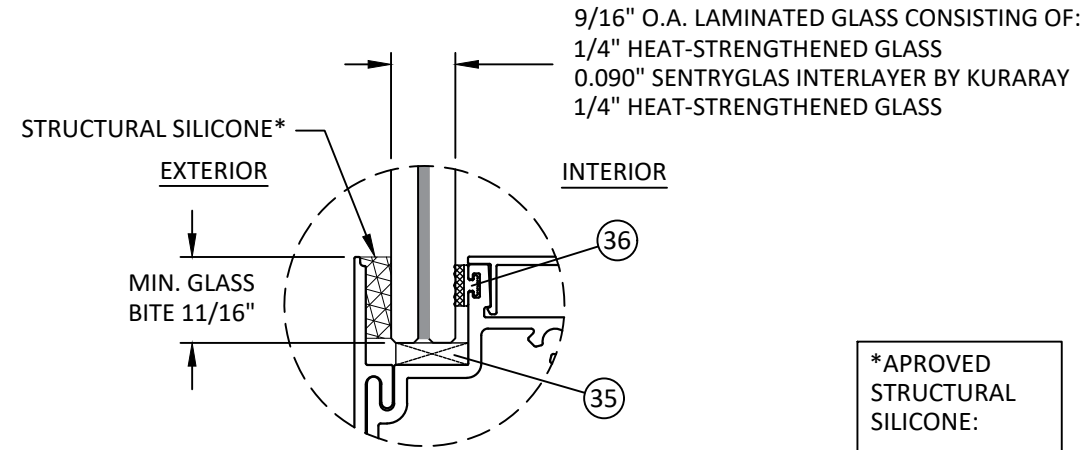
NOTE: ALLOWABLE LOAD FOR ALTERNATE SHAPES AS SHOWN ABOVE OR SIMILAR CAN BE VERIFIED BY INSCRIBING PICTURE WINDOW SHAPE WITHIN SQUARE OR RECTANGLE AS SHOWN IN DOTTED LINES AND OBTAINING ALLOWABLE LOADS FROM TABLES ON SHEETS 4-7.

GLAZING DETAIL

GLASS LOAD CAPACITY (PSF)		
D.L.O. DIMENSIONS		GLASS TYPE G1
D.L.O. WIDTH (IN.)	D.L.O. HEIGHT (IN.)	
33.5	91	84.0
39.5		84.0
45.5		84.0
51.5		84.0
57.5		84.0
63.5		76.1
69.5		69.5
75.5		64.0
81.5		59.3
33.5	103	84.0
39.5		84.0
45.5		84.0
51.5		84.0
57.5		84.0
63.5		76.1
69.5		69.5
75.5		64.0
81.5		59.3
33.5	115	84.0
39.5		84.0
45.5		84.0
51.5		84.0
57.5		84.0
63.5		76.1
69.5		69.5
75.5		64.0
81.5		59.3
33.5	127	84.0
39.5		84.0
45.5		84.0
51.5		84.0
57.5		84.0
63.5		76.1
69.5		69.5
75.5		64.0

GLASS LOAD CAPACITY (PSF)		
D.L.O. DIMENSIONS		GLASS TYPE G1
D.L.O. WIDTH (IN.)	D.L.O. HEIGHT (IN.)	
33.5	139	84.0
39.5		84.0
45.5		84.0
51.5		84.0
57.5		84.0
63.5		76.1
69.5		69.5
75.5		64.0
81.5		59.3
33.5	151	84.0
39.5		84.0
45.5		84.0
51.5		84.0
57.5		84.0
63.5		76.1
69.5		69.5
75.5		64.0
81.5		59.3
33.5	163	84.0
39.5		84.0
45.5		84.0
51.5		84.0
57.5		84.0
63.5		76.1
69.5		69.5
75.5		64.0
81.5		59.3
33.5	175	84.0
39.5		84.0
45.5		84.0
51.5		84.0
57.5		84.0
63.5		76.1
69.5		69.5
75.5		64.0

DAYLITE OPENING DIMENSIONS:
 DAYLITE OPENING WIDTH:
 • MAX. MULLION SPACING - 2.5"
 DAYLITE OPENING HEIGHT:
 • FRAME HEIGHT - 5.0"



GLAZING DETAIL 1

***APPROVED STRUCTURAL SILICONE:**

 DOWSIL - 993
 DOWSIL - 983
 DOWSIL - 895
 DOWSIL - 795

- GLAZING NOTES:**
- GLASS TYPE COMPLIES WITH ASTM E1300 REQUIREMENTS. TEMPER AND SAFETY GLAZING REQUIREMENTS SHALL BE REVIEWED ON A SITE SPECIFIC BASIS.
 - SACRIFICIAL LITE SHALL BE TEMPERED WHEN INSTALLED 30' OR HIGHER ABOVE GRADE IN HVHZ.
 - SETTING BLOCK DUROMETER HARDNESS OF 70-90 (SHORE A) AS REFERENCED IN FBC CHAPTER 24.
 - TWO APPROVED SETTING BLOCKS SHALL BE USED FOR GLASS WIDER THAN 36" AS PER FBC CHAPTER 24.
 - D.L.O. AND DESIGN PRESSURES MAY NOT EXCEED MAX. VALUES SHOWN ON TABLES IN SHEETS 4-7.

TITLE: **GLR-U96 & GLR-U97 WINDOW WALL SYSTEMS (HVHZ)(IMPACT)**
 GLAZING DETAIL & GLASS LOAD TABLES

PREPARED BY: **BUILDING DROPS, INC.**
 398 E. DANIA BEACH BLVD., STE. 338
 DANIA BEACH, FL 33004
 PH: (954)399-8478
 FAX: (954)744-4738
 WEB: www.buildingdrops.com



REMARKS	BY	DATE

THE INSTALLATION DETAILS DESCRIBED HEREIN ARE GENERIC AND MAY NOT REFLECT ACTUAL CONDITIONS FOR A SPECIFIC SITE. IF SITE CONDITIONS CAUSE INSTALLATION TO DEVIATE FROM THE REQUIREMENTS DETAILED HEREIN, A LICENSED ENGINEER OR ARCHITECT SHALL PREPARE SITE SPECIFIC DOCUMENTS FOR USE WITH THIS DOCUMENT.

HERMES F. NORERO P.E.
 FLORIDA P. E. NO. 73778
 398 E. DANIA BEACH BLVD., STE. 338
 DANIA BEACH, FL 33004
 FBPE CERT. OF AUTHORIZATION NO. 29578

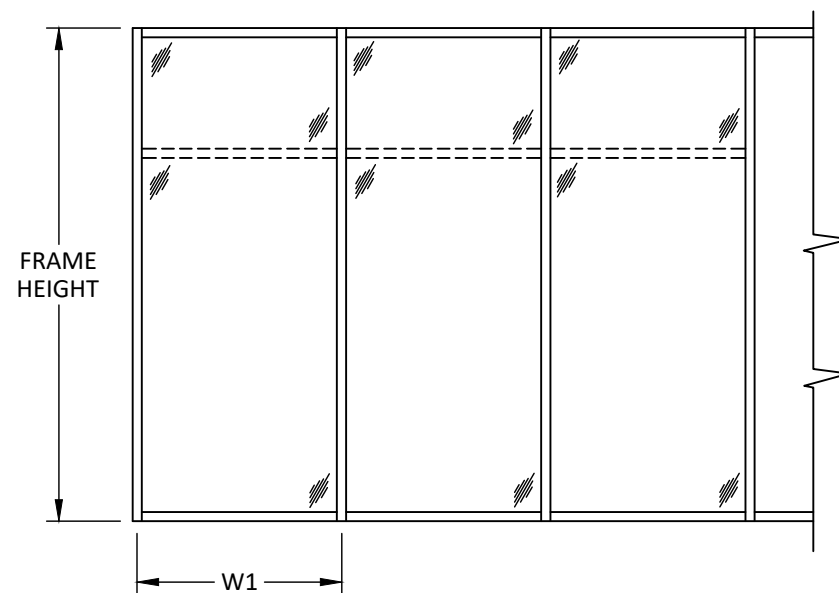
FL41922

DATE: 10.06.2023
DWG. BY: SH CHK. BY: HFN
SCALE: NTS
DWG. #: LRA022
SHEET: 4 OF 16

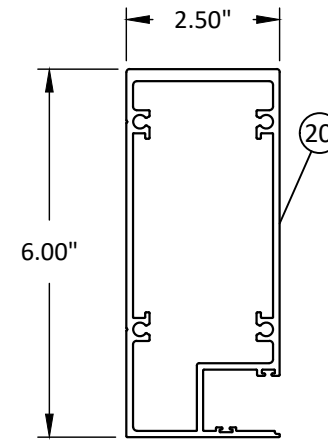
JAMB DESIGN PRESSURE TABLES

DSIGN LOAD CAPACITY TABLE - PSF					
NOMINAL DIMS.		J1	J2	J3	J4
WIDTH - W (IN.)	FRAME HEIGHT - H (IN.)				
36	96	75.0	75.0	115.0	100.0
42		75.0	75.0	115.0	100.0
48		75.0	75.0	115.0	100.0
54		75.0	75.0	115.0	100.0
60		75.0	75.0	115.0	100.0
66		75.0	75.0	115.0	100.0
72		75.0	75.0	115.0	100.0
78		75.0	75.0	100.0	100.0
84		75.0	75.0	-	100.0
36		108	75.0	75.0	115.0
42	75.0		75.0	115.0	100.0
48	75.0		75.0	115.0	100.0
54	75.0		75.0	115.0	100.0
60	75.0		75.0	115.0	100.0
66	75.0		75.0	115.0	100.0
72	75.0		75.0	-	100.0
78	-		75.0	-	100.0
84	-		75.0	-	100.0
36	120		75.0	75.0	115.0
42		75.0	75.0	115.0	100.0
48		75.0	75.0	115.0	100.0
54		75.0	75.0	115.0	100.0
60		75.0	75.0	115.0	100.0
66		75.0	75.0	-	100.0
72		-	75.0	-	100.0
78		-	75.0	-	100.0
84		-	75.0	-	100.0
36		132	-	-	100.0
42	-		-	100.0	100.0
48	-		-	100.0	100.0
54	-		-	100.0	100.0
60	-		-	-	100.0
66	-		-	-	100.0
72	-		-	-	100.0
78	-		-	-	100.0

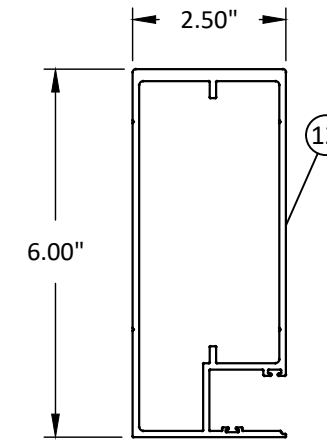
DESIGN LOAD CAPACITY TABLE - PSF					
NOMINAL DIMS.		J1	J2	J3	J4
WIDTH - W (IN.)	FRAME HEIGHT - H (IN.)				
36	144	-	-	100.0	100.0
42		-	-	100.0	100.0
48		-	-	100.0	100.0
54		-	-	-	100.0
60		-	-	-	100.0
66		-	-	-	100.0
72	-	-	-	100.0	
36	156	-	-	100.0	100.0
42		-	-	100.0	100.0
48		-	-	-	100.0
54		-	-	-	100.0
60		-	-	-	100.0
66		-	-	-	100.0
36	168	-	-	-	84.0
42		-	-	-	84.0
48		-	-	-	84.0
54		-	-	-	84.0
60		-	-	-	84.0
66		-	-	-	84.0
36	180	-	-	-	84.0
42		-	-	-	84.0
48		-	-	-	84.0
54		-	-	-	84.0
60		-	-	-	84.0
66		-	-	-	84.0



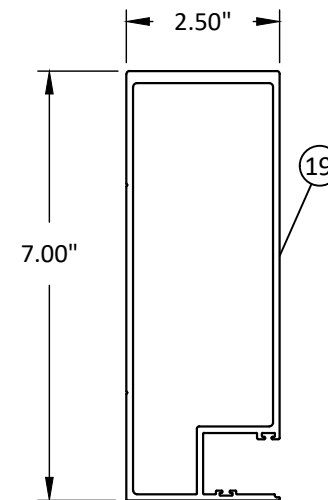
WIDTH (W) = W1



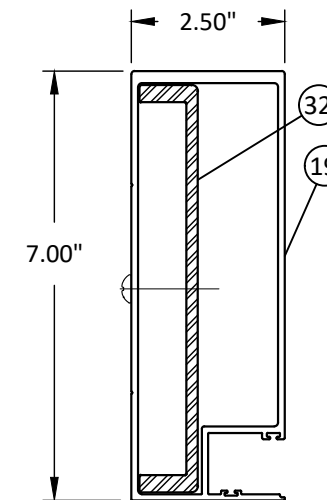
JAMB - 'J1'



JAMB - 'J2'



JAMB - 'J3'



JAMB - 'J4'

TITLE: GLR-U96 & GLR-U97
WINDOW WALL SYSTEMS
(HVHZ)(IMPACT)
JAMB DESIGN PRESSURE TABLES

PREPARED BY: BUILDING DROPS, INC.
398 E. DANIA BEACH BLVD., STE. 338
DANIA BEACH, FL 33004
PH: (954)399-8478
FAX: (954)744-4738
WEB: www.buildingdrops.com



REMARKS	BY	DATE

THE INSTALLATION DETAILS DESCRIBED HEREIN ARE GENERIC AND MAY NOT REFLECT ACTUAL CONDITIONS FOR A SPECIFIC SITE. IF SITE CONDITIONS CAUSE INSTALLATION TO DEVIATE FROM THE REQUIREMENTS DETAILED HEREIN, A LICENSED ENGINEER OR ARCHITECT SHALL PREPARE SITE SPECIFIC DOCUMENTS FOR USE WITH THIS DOCUMENT.

HERMES F. NORERO P.E.
FLORIDA P. E. NO. 73778
398 E. DANIA BEACH BLVD., STE. 338
DANIA BEACH, FL 33004
FBPE CERT. OF AUTHORIZATION NO. 29578

FL41922

DATE: 10.06.2023

DWG. BY: SH
CHK. BY: HFN

SCALE: NTS

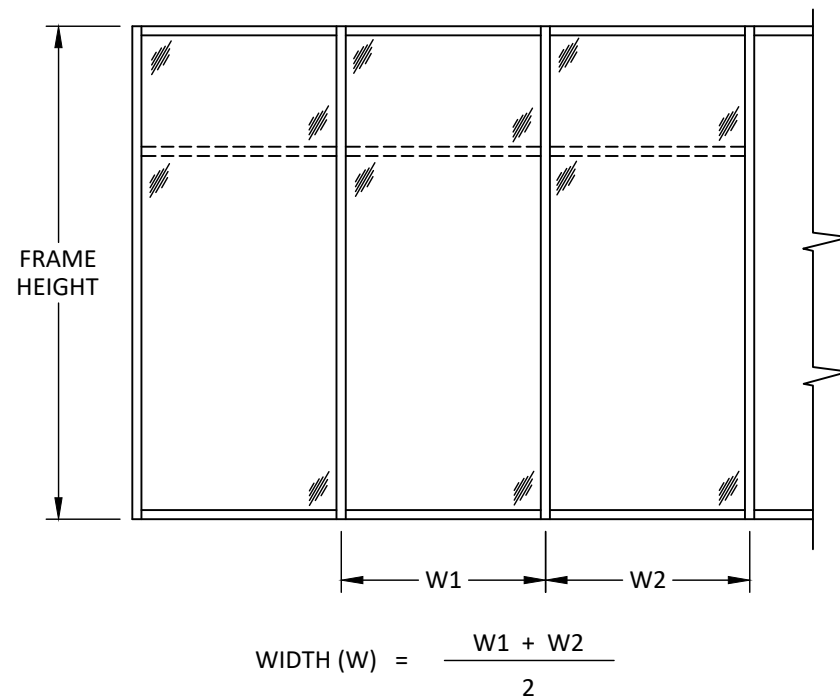
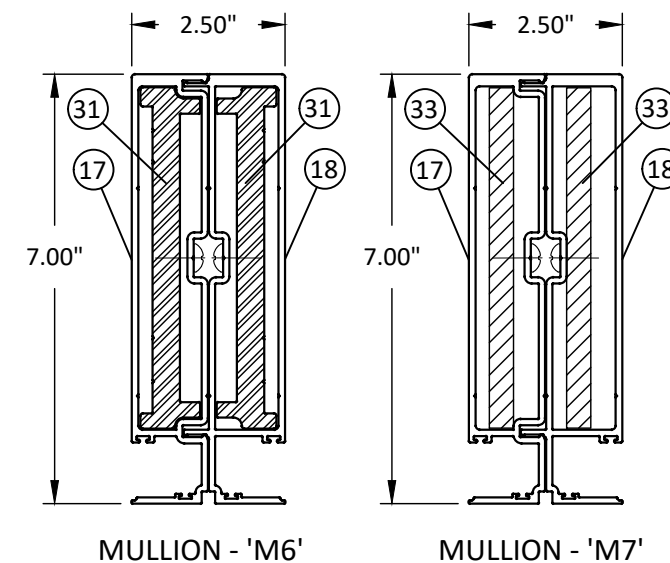
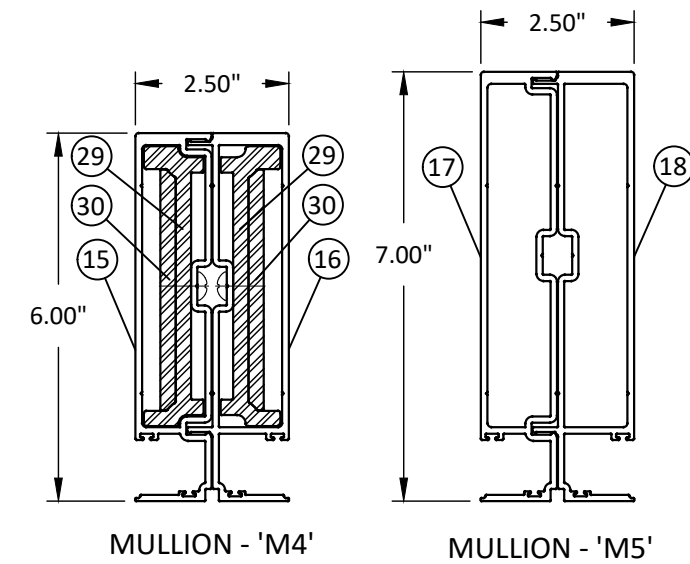
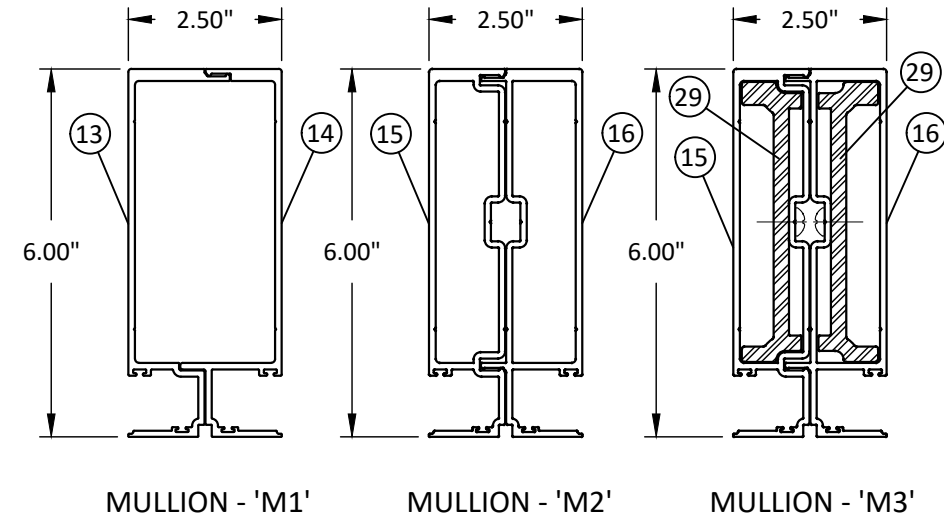
DWG. #: LRA022

SHEET: 5 OF 16

MULLION DESIGN PRESSURE TABLES

DESIGN LOAD CAPACITY TABLE - PSF								
NOMINAL DIMS.		M1	M2	M3	M4	M5	M6	M7
WIDTH - W (IN.)	FRAME HEIGHT - H (IN.)							
36	96	75.0	75.0	75.0	140.0	115.0	100.0	100.0
42		75.0	75.0	75.0	140.0	115.0	100.0	100.0
48		75.0	75.0	75.0	140.0	115.0	100.0	100.0
54		75.0	75.0	75.0	140.0	115.0	100.0	100.0
60		75.0	75.0	75.0	140.0	115.0	100.0	100.0
66		-	75.0	75.0	140.0	115.0	100.0	100.0
72		-	75.0	75.0	140.0	115.0	100.0	100.0
78		-	-	75.0	140.0	-	100.0	100.0
84	-	-	-	75.0	140.0	-	-	100.0
36	108	75.0	75.0	75.0	-	115.0	100.0	100.0
42		75.0	75.0	75.0	-	115.0	100.0	100.0
48		75.0	75.0	75.0	-	115.0	100.0	100.0
54		75.0	75.0	75.0	-	115.0	100.0	100.0
60		-	75.0	75.0	-	115.0	100.0	100.0
66		-	75.0	75.0	-	115.0	100.0	100.0
72		-	-	75.0	-	-	-	100.0
78		-	-	-	75.0	-	-	100.0
84	-	-	-	-	-	-	-	100.0
36	120	75.0	75.0	75.0	-	115.0	100.0	100.0
42		75.0	75.0	75.0	-	115.0	100.0	100.0
48		75.0	75.0	75.0	-	115.0	100.0	100.0
54		-	75.0	75.0	-	115.0	100.0	100.0
60		-	75.0	75.0	-	115.0	100.0	100.0
66		-	-	75.0	-	-	-	100.0
72		-	-	75.0	-	-	-	100.0
78		-	-	-	75.0	-	-	100.0
84	-	-	-	-	-	-	-	100.0
36	132	-	-	-	-	-	100.0	100.0
42		-	-	-	-	-	100.0	100.0
48		-	-	-	-	-	100.0	100.0
54		-	-	-	-	-	100.0	100.0
60		-	-	-	-	-	-	100.0
66		-	-	-	-	-	-	100.0
72		-	-	-	-	-	-	100.0
78		-	-	-	-	-	-	-

DESIGN LOAD CAPACITY TABLE - PSF									
NOMINAL DIMS.		M1	M2	M3	M4	M5	M6	M7	
WIDTH - W (IN.)	FRAME HEIGHT - H (IN.)								
36	144	-	-	-	-	-	100.0	100.0	
42		-	-	-	-	-	100.0	100.0	
48		-	-	-	-	-	100.0	100.0	
54		-	-	-	-	-	-	100.0	
60		-	-	-	-	-	-	100.0	
66		-	-	-	-	-	-	100.0	
72		-	-	-	-	-	-	100.0	
36		156	-	-	-	-	-	100.0	100.0
42	-		-	-	-	-	100.0	100.0	
48	-		-	-	-	-	100.0	100.0	
54	-		-	-	-	-	-	100.0	
60	-		-	-	-	-	-	100.0	
66	-		-	-	-	-	-	100.0	
36	168		-	-	-	-	-	84.0	84.0
42			-	-	-	-	-	84.0	84.0
48		-	-	-	-	-	84.0	84.0	
54		-	-	-	-	-	84.0	84.0	
60		-	-	-	-	-	84.0	84.0	
36		180	-	-	-	-	-	84.0	84.0
42			-	-	-	-	-	84.0	84.0
48			-	-	-	-	-	84.0	84.0
54	-		-	-	-	-	84.0	84.0	
60	-		-	-	-	-	84.0	84.0	



TITLE: GLR-U96 & GLR-U97
WINDOW WALL SYSTEMS
(HVHZ)(IMPACT)
MULLION DESIGN PRESSURE TABLES

PREPARED BY: BUILDING DROPS, INC.
398 E. DANIA BEACH BLVD., STE. 338
DANIA BEACH, FL 33004
PH: (954)399-8478
FAX: (954)744-4738
WEB: www.buildingdrops.com

BD
BUILDING DROPS

REMARKS	BY	DATE

THE INSTALLATION DETAILS DESCRIBED HEREIN ARE GENERIC AND MAY NOT REFLECT ACTUAL CONDITIONS FOR A SPECIFIC SITE. IF SITE CONDITIONS CAUSE INSTALLATION TO DEVIATE FROM THE REQUIREMENTS DETAILED HEREIN, A LICENSED ENGINEER OR ARCHITECT SHALL PREPARE SITE SPECIFIC DOCUMENTS FOR USE WITH THIS DOCUMENT.

HERMES F. NORERO P.E.
FLORIDA P. E. NO. 73778
398 E. DANIA BEACH BLVD., STE. 338
DANIA BEACH, FL 33004
FBPE CERT. OF AUTHORIZATION NO. 29578

FL41922	
DATE: 10.06.2023	
DWG. BY: SH	CHK. BY: HFN
SCALE: NTS	
DWG. #: LRA022	
SHEET: 6	OF 16

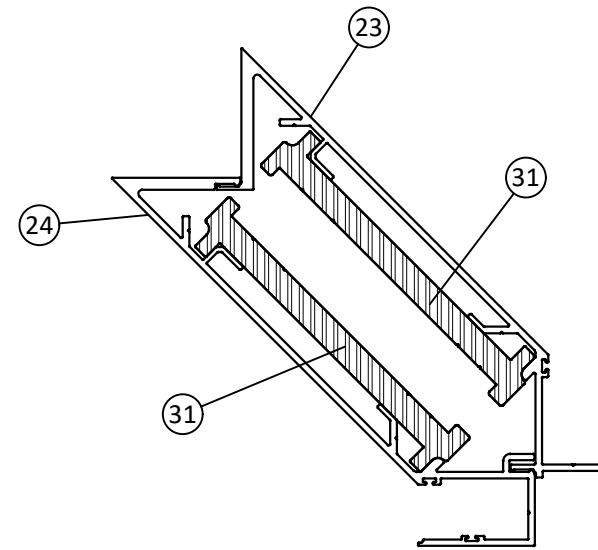
CORNER MULLION DESIGN PRESSURE TABLES

LINEA ROSSA®
WINDOWS & DOORS

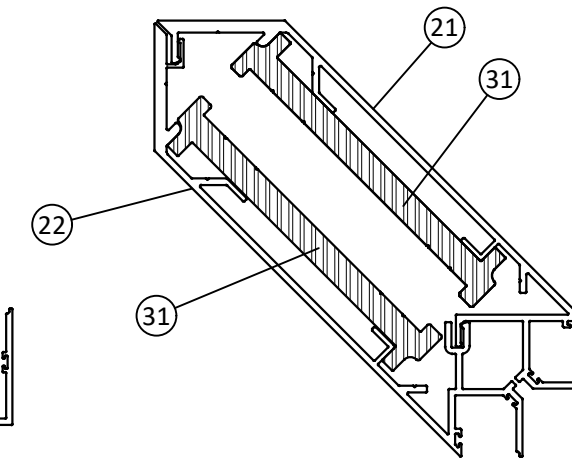
1850 NW. 84TH AVE., STE. 114
DORAL, FL 33126
PH: (305)815-8797

DESIGN LOAD CAPACITY TABLE - PSF			
NOMINAL DIMS.		C1	C2
WIDTH - W (IN.)	FRAME HEIGHT - H (IN.)		
36	96	84.0	84.0
42		84.0	84.0
48		84.0	84.0
54		84.0	84.0
60		84.0	84.0
66		84.0	84.0
72		84.0	84.0
78		84.0	84.0
84		84.0	84.0
36		108	84.0
42	84.0		84.0
48	84.0		84.0
54	84.0		84.0
60	84.0		84.0
66	84.0		84.0
72	84.0		84.0
78	84.0		84.0
84	84.0		84.0
36	120		84.0
42		84.0	84.0
48		84.0	84.0
54		84.0	84.0
60		84.0	84.0
66		84.0	84.0
72		84.0	84.0
78		84.0	84.0
84		84.0	84.0
36		132	84.0
42	84.0		84.0
48	84.0		84.0
54	84.0		84.0
60	84.0		84.0
66	84.0		84.0
72	84.0		84.0
78	84.0		84.0

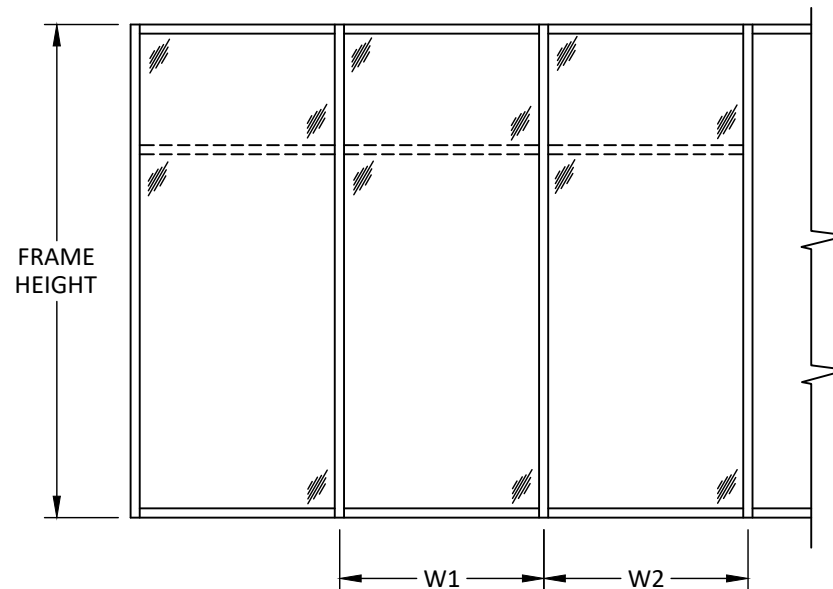
DESIGN LOAD CAPACITY TABLE - PSF			
NOMINAL DIMS.		C1	C2
WIDTH - W (IN.)	FRAME HEIGHT - H (IN.)		
36	144	84.0	84.0
42		84.0	84.0
48		84.0	84.0
54		84.0	84.0
60		84.0	84.0
66		84.0	84.0
72	156	84.0	84.0
36		84.0	84.0
42		84.0	84.0
48		84.0	84.0
54		84.0	84.0
60		84.0	84.0
66	168	84.0	84.0
36		84.0	84.0
42		84.0	84.0
48		84.0	84.0
54		84.0	84.0
60		84.0	84.0
36	180	84.0	84.0
42		84.0	84.0
48		84.0	84.0
54		84.0	84.0
60		84.0	84.0
66		84.0	84.0



CORNER MULLION - 'C1'



CORNER MULLION - 'C2'



$$\text{WIDTH (W)} = \frac{W1 + W2}{2}$$

TITLE: GLR-U96 & GLR-U97
WINDOW WALL SYSTEMS
(HVHZ)(IMPACT)
CORNER MULLION DESIGN PRESSURE TABLES

PREPARED BY: BUILDING DROPS, INC.
398 E. DANIA BEACH BLVD., STE. 338
DANIA BEACH, FL 33004
PH: (954)399-8478
FAX: (954)744-4738
WEB: www.buildingdrops.com



REMARKS	BY	DATE

THE INSTALLATION DETAILS DESCRIBED HEREIN ARE GENERIC AND MAY NOT REFLECT ACTUAL CONDITIONS FOR A SPECIFIC SITE. IF SITE CONDITIONS CAUSE INSTALLATION TO DEVIATE FROM THE REQUIREMENTS DETAILED HEREIN, A LICENSED ENGINEER OR ARCHITECT SHALL PREPARE SITE SPECIFIC DOCUMENTS FOR USE WITH THIS DOCUMENT.

HERMES F. NORERO P.E.
FLORIDA P. E. NO. 73778
398 E. DANIA BEACH BLVD., STE. 338
DANIA BEACH, FL 33004
FBPE CERT. OF AUTHORIZATION NO. 29578

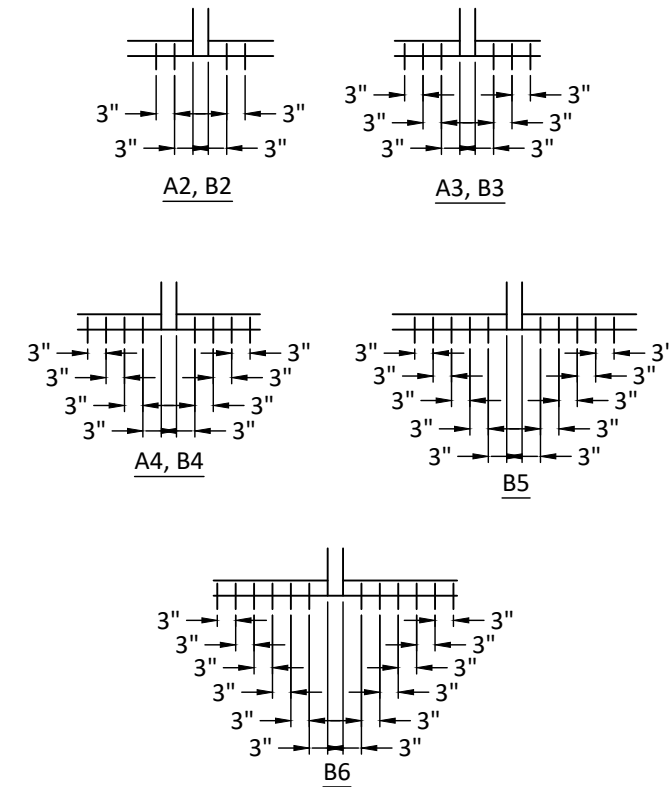
FL41922

DATE: 10.06.2023	
DWG. BY: SH	CHK. BY: HFN
SCALE: NTS	
DWG. #: LRA022	
SHEET: 7	OF 16

TYPE A & B ANCHOR TABLES

ANCHOR LOAD CAPACITY (PSF) EXT. (+) & INT (-)									
NOMINAL DIMS. (IN.)		ANCHOR TYPE 'A'			ANCHOR TYPE 'B'				
TRIBUTARY WIDTH	FRAME HEIGHT	A2	A3	A4	B2	B3	B4	B5	B6
36	96	140.0	140.0	140.0	100.0	140.0	140.0	140.0	140.0
42		140.0	140.0	140.0	85.7	128.6	140.0	140.0	140.0
48		136.8	140.0	140.0	75.0	112.5	140.0	140.0	140.0
54		121.6	140.0	140.0	66.7	100.0	133.3	140.0	140.0
60		109.4	140.0	140.0	60.0	90.0	120.0	140.0	140.0
66		99.5	140.0	140.0	54.5	81.8	109.1	136.4	140.0
72		91.2	136.8	140.0	50.0	75.0	100.0	125.0	140.0
78		84.2	126.2	140.0	46.2	69.2	92.3	115.4	138.5
84		78.1	117.2	140.0	42.9	64.3	85.7	107.1	128.6
36	108	140.0	140.0	140.0	88.9	133.3	140.0	140.0	140.0
42		138.9	140.0	140.0	76.2	114.3	140.0	140.0	140.0
48		121.6	140.0	140.0	66.7	100.0	133.3	140.0	140.0
54		108.0	140.0	140.0	59.3	88.9	118.5	140.0	140.0
60		97.2	140.0	140.0	53.3	80.0	106.7	133.3	140.0
66		88.4	132.6	140.0	48.5	72.7	97.0	121.2	140.0
72		81.0	121.6	140.0	44.4	66.7	88.9	111.1	133.3
78		74.8	112.2	140.0	41.0	61.5	82.1	102.6	123.1
84		69.5	104.2	138.9	38.1	57.1	76.2	95.2	114.3
36	120	140.0	140.0	140.0	80.0	120.0	140.0	140.0	140.0
42		125.0	140.0	140.0	68.6	102.9	137.1	140.0	140.0
48		109.4	140.0	140.0	60.0	90.0	120.0	140.0	140.0
54		97.2	140.0	140.0	53.3	80.0	106.7	133.3	140.0
60		87.5	131.3	140.0	48.0	72.0	96.0	120.0	140.0
66		79.6	119.3	140.0	43.6	65.5	87.3	109.1	130.9
72		72.9	109.4	140.0	40.0	60.0	80.0	100.0	120.0
78		67.3	101.0	134.6	36.9	55.4	73.8	92.3	110.8
84		62.5	93.8	125.0	34.3	51.4	68.6	85.7	102.9
36	132	132.6	140.0	140.0	72.7	109.1	140.0	140.0	140.0
42		113.7	140.0	140.0	62.3	93.5	124.7	140.0	140.0
48		99.5	140.0	140.0	54.5	81.8	109.1	136.4	140.0
54		88.4	132.6	140.0	48.5	72.7	97.0	121.2	140.0
60		79.6	119.3	140.0	43.6	65.5	87.3	109.1	130.9
66		72.3	108.5	140.0	39.7	59.5	79.3	99.2	119.0
72		66.3	99.5	132.6	36.4	54.5	72.7	90.9	109.1
78		61.2	91.8	122.4	33.6	50.3	67.1	83.9	100.7

ANCHOR LOAD CAPACITY (PSF) EXT. (+) & INT (-)										
NOMINAL DIMS. (IN.)		ANCHOR TYPE 'A'			ANCHOR TYPE 'B'					
TRIBUTARY WIDTH	FRAME HEIGHT	A2	A3	A4	B2	B3	B4	B5	B6	
36	144	121.6	140.0	140.0	66.7	100.0	133.3	140.0	140.0	
42		104.2	140.0	140.0	57.1	85.7	114.3	140.0	140.0	
48		91.2	136.8	140.0	50.0	75.0	100.0	125.0	140.0	
54		81.0	121.6	140.0	44.4	66.7	88.9	111.1	133.3	
60		72.9	109.4	140.0	40.0	60.0	80.0	100.0	120.0	
66		66.3	99.5	132.6	36.4	54.5	72.7	90.9	109.1	
72		60.8	91.2	121.6	33.3	50.0	66.7	83.3	100.0	
36		156	112.2	140.0	140.0	61.5	92.3	123.1	140.0	140.0
42			96.2	140.0	140.0	52.7	79.1	105.5	131.9	140.0
48	84.2		126.2	140.0	46.2	69.2	92.3	115.4	138.5	
54	74.8		112.2	140.0	41.0	61.5	82.1	102.6	123.1	
60	67.3		101.0	134.6	36.9	55.4	73.8	92.3	110.8	
66	61.2		91.8	122.4	33.6	50.3	67.1	83.9	100.7	
36	168		104.2	140.0	140.0	57.1	85.7	114.3	140.0	140.0
42			89.3	134.0	140.0	49.0	73.5	98.0	122.4	140.0
48			78.1	117.2	140.0	42.9	64.3	85.7	107.1	128.6
54		69.5	104.2	138.9	38.1	57.1	76.2	95.2	114.3	
60		62.5	93.8	125.0	34.3	51.4	68.6	85.7	102.9	
36		180	97.2	140.0	140.0	53.3	80.0	106.7	133.3	140.0
42			83.4	125.0	140.0	45.7	68.6	91.4	114.3	137.1
48			72.9	109.4	140.0	40.0	60.0	80.0	100.0	120.0
54			64.8	97.2	129.7	35.6	53.3	71.1	88.9	106.7
60	58.3		87.5	116.7	32.0	48.0	64.0	80.0	96.0	



ANCHOR SCHEDULE				
ANCHOR TYPE	ANCHOR DESCRIPTION	SUBSTRATE REQUIREMENTS	MIN. EMBEDMENT	MIN. EDGE DISTANCE
A	5/16" DEWALT ULTRACON +	CONCRETE MIN. F'C = 3000 PSI	2"	3"
B		GROUT-FILLED BLOCK PER C-90, MIN. F'C' = 2000 PSI	1-3/4"	2-1/2"
C		WOOD, MIN. S.G. = 0.55	1-1/2"	1-9/16"
D	5/16" SELF-DRILLING SCREW (GRADE 5)	STEEL: MIN. 16 GA., MIN. Fy=36 KSI, ALUM: MIN. 1/8", MIN. 6063-T5	3 THREADS PENETRATION PAST METAL STRUCTURE	3/4"

TITLE: GLR-U96 & GLR-U97
WINDOW WALL SYSTEMS
(HVHZ)(IMPACT)
TYPE A & B ANCHOR TABLES

PREPARED BY: BUILDING DROPS, INC.
398 E. DANIA BEACH BLVD., STE. 338
DANIA BEACH, FL 33004
PH: (954)399-8478
FAX: (954)744-4738
WEB: www.buildingdrops.com

REMARKS	BY	DATE

THE INSTALLATION DETAILS DESCRIBED HEREIN ARE GENERIC AND MAY NOT REFLECT ACTUAL CONDITIONS FOR A SPECIFIC SITE. IF SITE CONDITIONS CAUSE INSTALLATION TO DEVIATE FROM THE REQUIREMENTS DETAILED HEREIN, A LICENSED ENGINEER OR ARCHITECT SHALL PREPARE SITE SPECIFIC DOCUMENTS FOR USE WITH THIS DOCUMENT.

HERMES F. NORERO P.E.
FLORIDA P. E. NO. 73778
398 E. DANIA BEACH BLVD., STE. 338
DANIA BEACH, FL 33004
FBPE CERT. OF AUTHORIZATION NO. 29578

FL41922

DATE: 10.06.2023

DWG. BY: SH CHK. BY: HFN

SCALE: NTS

DWG. #: LRA022

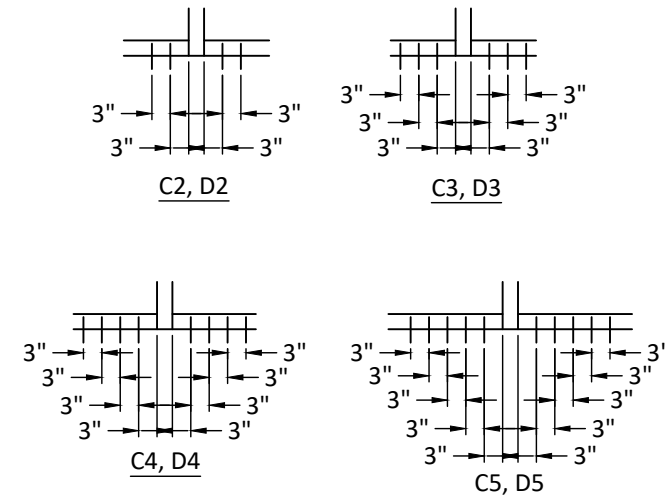
SHEET: OF 16

8

TYPE C & D ANCHOR TABLES

ANCHOR LOAD CAPACITY (PSF) EXT. (+) & INT. (-)									
NOMINAL DIMS. (IN.)		ANCHOR TYPE 'C'				ANCHOR TYPE 'D'			
TRIBUTARY WIDTH	FRAME HEIGHT	C2	C3	C4	C5	D2	D3	D4	D5
36	96	127.8	140.0	140.0	140.0	140.0	140.0	140.0	140.0
42		109.5	140.0	140.0	140.0	131.0	140.0	140.0	140.0
48		95.8	140.0	140.0	140.0	114.6	140.0	140.0	140.0
54		85.2	127.8	140.0	140.0	101.9	140.0	140.0	140.0
60		76.7	115.0	140.0	140.0	91.7	137.5	140.0	140.0
66		69.7	104.5	139.4	140.0	83.3	125.0	140.0	140.0
72		63.9	95.8	127.8	140.0	76.4	114.6	140.0	140.0
78		59.0	88.5	117.9	140.0	70.5	105.8	140.0	140.0
84		54.8	82.1	109.5	136.9	65.5	98.2	131.0	140.0
36		108	113.6	140.0	140.0	140.0	135.8	140.0	140.0
42	97.4		140.0	140.0	140.0	116.4	140.0	140.0	140.0
48	85.2		127.8	140.0	140.0	101.9	140.0	140.0	140.0
54	75.7		113.6	140.0	140.0	90.5	135.8	140.0	140.0
60	68.1		102.2	136.3	140.0	81.5	122.2	140.0	140.0
66	62.0		92.9	123.9	140.0	74.1	111.1	140.0	140.0
72	56.8		85.2	113.6	140.0	67.9	101.9	135.8	140.0
78	52.4		78.6	104.8	131.1	62.7	94.0	125.4	140.0
84	48.7		73.0	97.4	121.7	58.2	87.3	116.4	140.0
36	120		102.2	140.0	140.0	140.0	122.2	140.0	140.0
42		87.6	131.4	140.0	140.0	104.8	140.0	140.0	140.0
48		76.7	115.0	140.0	140.0	91.7	137.5	140.0	140.0
54		68.1	102.2	136.3	140.0	81.5	122.2	140.0	140.0
60		61.3	92.0	122.7	140.0	73.3	110.0	140.0	140.0
66		55.8	83.6	111.5	139.4	66.7	100.0	133.3	140.0
72		51.1	76.7	102.2	127.8	61.1	91.7	122.2	140.0
78		47.2	70.8	94.4	117.9	56.4	84.6	112.8	140.0
84		43.8	65.7	87.6	109.5	52.4	78.6	104.8	131.0
36		132	92.9	139.4	140.0	140.0	111.1	140.0	140.0
42	79.7		119.5	140.0	140.0	95.2	140.0	140.0	140.0
48	69.7		104.5	139.4	140.0	83.3	125.0	140.0	140.0
54	62.0		92.9	123.9	140.0	74.1	111.1	140.0	140.0
60	55.8		83.6	111.5	139.4	66.7	100.0	133.3	140.0
66	50.7		76.0	101.4	126.7	60.6	90.9	121.2	140.0
72	46.5		69.7	92.9	116.2	55.6	83.3	111.1	138.9
78	42.9		64.3	85.8	107.2	51.3	76.9	102.6	128.2

ANCHOR LOAD CAPACITY (PSF) EXT. (+) & INT. (-)										
NOMINAL DIMS. (IN.)		ANCHOR TYPE 'C'				ANCHOR TYPE 'D'				
TRIBUTARY WIDTH	FRAME HEIGHT	C2	C3	C4	C5	D2	D3	D4	D5	
36	144	85.2	127.8	140.0	140.0	101.9	140.0	140.0	140.0	
42		73.0	109.5	140.0	140.0	87.3	131.0	140.0	140.0	
48		63.9	95.8	127.8	140.0	76.4	114.6	140.0	140.0	
54		56.8	85.2	113.6	140.0	67.9	101.9	135.8	140.0	
60		51.1	76.7	102.2	127.8	61.1	91.7	122.2	140.0	
66		46.5	69.7	92.9	116.2	55.6	83.3	111.1	138.9	
72		42.6	63.9	85.2	106.5	50.9	76.4	101.9	127.3	
36		156	78.6	117.9	140.0	140.0	94.0	140.0	140.0	140.0
42			67.4	101.1	134.8	140.0	80.6	120.9	140.0	140.0
48			59.0	88.5	117.9	140.0	70.5	105.8	140.0	140.0
54	52.4		78.6	104.8	131.1	62.7	94.0	125.4	140.0	
60	47.2		70.8	94.4	117.9	56.4	84.6	112.8	140.0	
66	42.9	64.3	85.8	107.2	51.3	76.9	102.6	128.2		
36	168	73.0	109.5	140.0	140.0	87.3	131.0	140.0	140.0	
42		62.6	93.9	125.2	140.0	74.8	112.2	140.0	140.0	
48		54.8	82.1	109.5	136.9	65.5	98.2	131.0	140.0	
54		48.7	73.0	97.4	121.7	58.2	87.3	116.4	140.0	
60		43.8	65.7	87.6	109.5	52.4	78.6	104.8	131.0	
36	180	68.1	102.2	136.3	140.0	81.5	122.2	140.0	140.0	
42		58.4	87.6	116.8	140.0	69.8	104.8	139.7	140.0	
48		51.1	76.7	102.2	127.8	61.1	91.7	122.2	140.0	
54		45.4	68.1	90.9	113.6	54.3	81.5	108.6	135.8	
60		40.9	61.3	81.8	102.2	48.9	73.3	97.8	122.2	



ANCHOR SCHEDULE				
ANCHOR TYPE	ANCHOR DESCRIPTION	SUBSTRATE REQUIREMENTS	MIN. EMBEDMENT	MIN. EDGE DISTANCE
A	5/16" DEWALT ULTRACON +	CONCRETE MIN. F'C = 3000 PSI	2"	3"
B		GROUT-FILLED BLOCK PER C-90, MIN. F'C' = 2000 PSI	1-3/4"	2-1/2"
C		WOOD, MIN. S.G. = 0.55	1-1/2"	1-9/16"
D	5/16" SELF-DRILLING SCREW (GRADE 5)	STEEL: MIN. 16 GA., MIN. Fy=36 KSI, ALUM: MIN. 1/8", MIN. 6063-T5	3 THREADS PENETRATION PAST METAL STRUCTURE	3/4"

TITLE: GLR-U96 & GLR-U97
WINDOW WALL SYSTEMS
(HVHZ)(IMPACT)
TYPE C & D ANCHOR TABLES

PREPARED BY: BUILDING DROPS, INC.
398 E. DANIA BEACH BLVD., STE. 338
DANIA BEACH, FL 33004
PH: (954)399-8478
FAX: (954)744-4738
WEB: www.buildingdrops.com

REMARKS	BY	DATE

THE INSTALLATION DETAILS DESCRIBED HEREIN ARE GENERIC AND MAY NOT REFLECT ACTUAL CONDITIONS FOR A SPECIFIC SITE. IF SITE CONDITIONS CAUSE INSTALLATION TO DEVIATE FROM THE REQUIREMENTS DETAILED HEREIN, A LICENSED ENGINEER OR ARCHITECT SHALL PREPARE SITE SPECIFIC DOCUMENTS FOR USE WITH THIS DOCUMENT.

HERMES F. NORERO P.E.
FLORIDA P. E. NO. 73778
398 E. DANIA BEACH BLVD., STE. 338
DANIA BEACH, FL 33004
FBPE CERT. OF AUTHORIZATION NO. 29578

FL41922

DATE: 10.06.2023

DWG. BY: SH CHK. BY: HFN

SCALE: NTS

DWG. #: LRA022

SHEET: OF 16

TITLE: GLR-U96 & GLR-U97
WINDOW WALL SYSTEMS
(HVHZ)(IMPACT)
VERTICAL SECTIONS

PREPARED BY: BUILDING DROPS, INC.
398 E. DANIA BEACH BLVD., STE. 338
DANIA BEACH, FL 33004
PH: (954)399-8478
FAX: (954)744-4738
WEB: www.buildingdrops.com



REMARKS	BY	DATE

THE INSTALLATION DETAILS DESCRIBED HEREIN ARE GENERIC AND MAY NOT REFLECT ACTUAL CONDITIONS FOR A SPECIFIC SITE. IF SITE CONDITIONS CAUSE INSTALLATION TO DEVIATE FROM THE REQUIREMENTS DETAILED HEREIN, A LICENSED ENGINEER OR ARCHITECT SHALL PREPARE SITE SPECIFIC DOCUMENTS FOR USE WITH THIS DOCUMENT.

HERMES F. NORERO P.E.
FLORIDA P. E. NO. 73778
398 E. DANIA BEACH BLVD., STE. 338
DANIA BEACH, FL 33004
FBPE CERT. OF AUTHORIZATION NO. 29578

FL41922

DATE: 10.06.2023

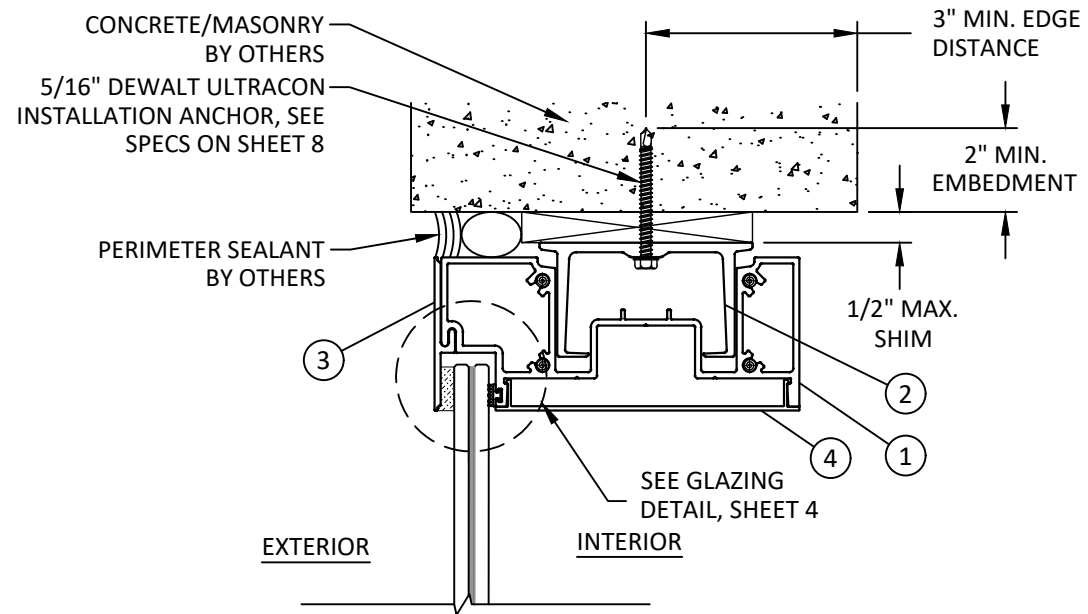
DWG. BY: SH CHK. BY: HFN

SCALE: NTS

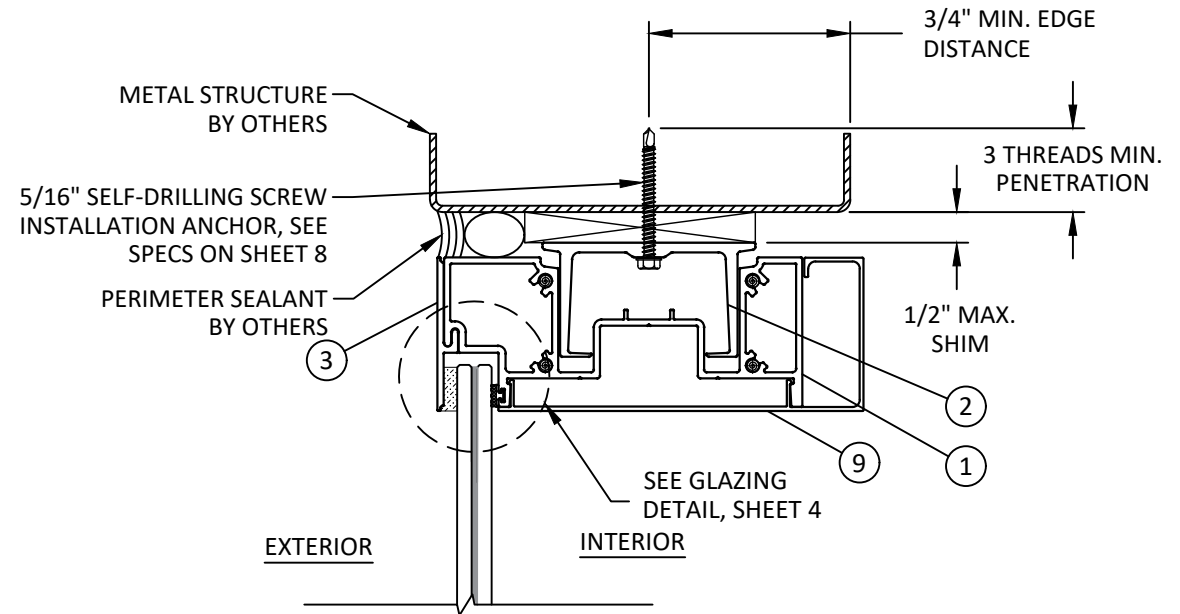
DWG. #: LRA022

SHEET: OF 16

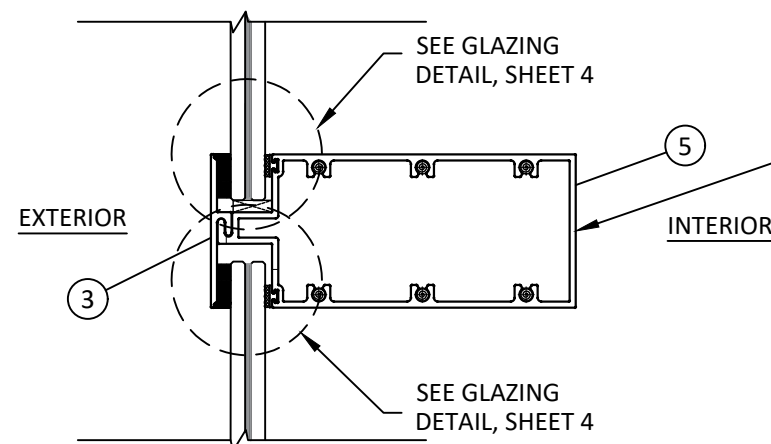
10



A
10 VERTICAL SECTION
HEAD - CONCRETE/MASONRY SUBSTRATE



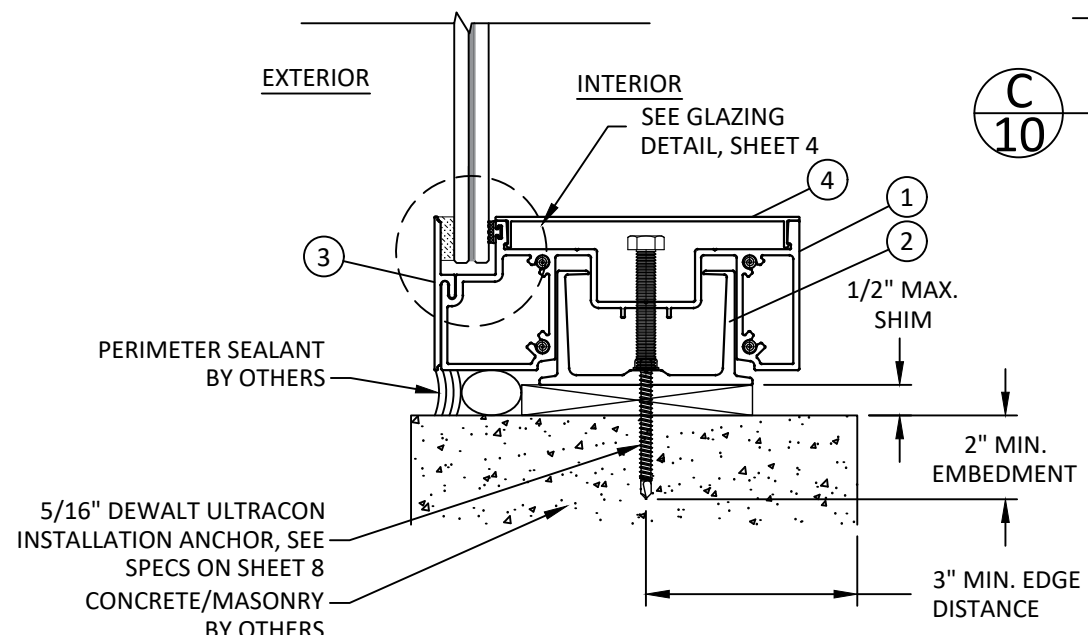
B
10 VERTICAL SECTION
HEAD - METAL SUBSTRATE



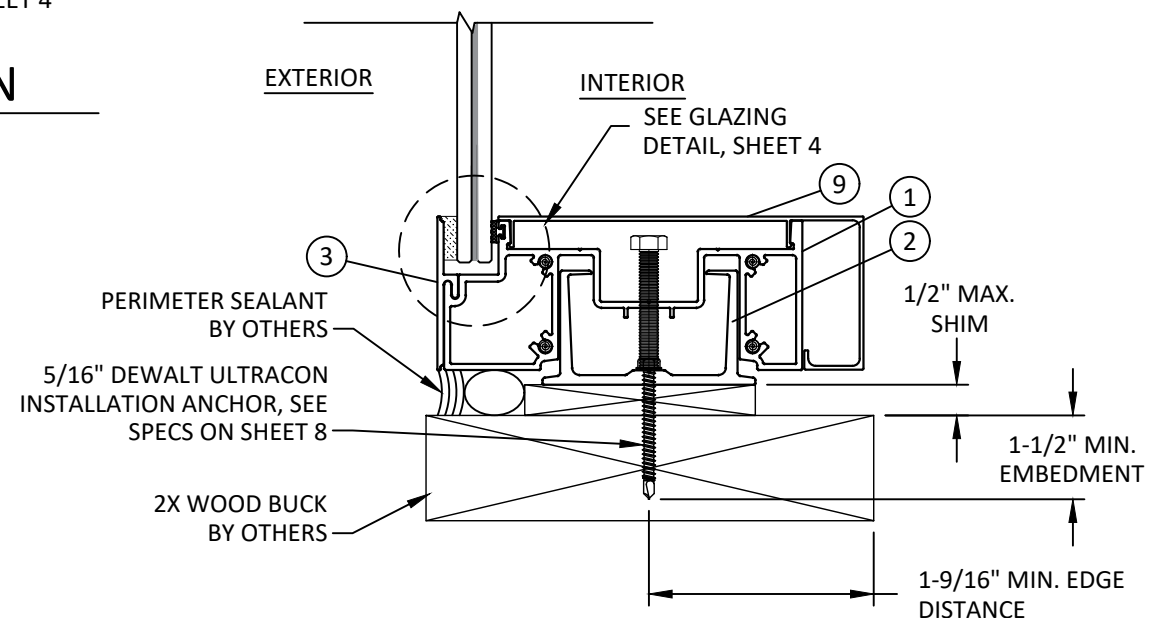
C
10 VERTICAL SECTION
HORIZONTAL MULLION

DESIGN LOAD CAPACITY TABLE - PSF

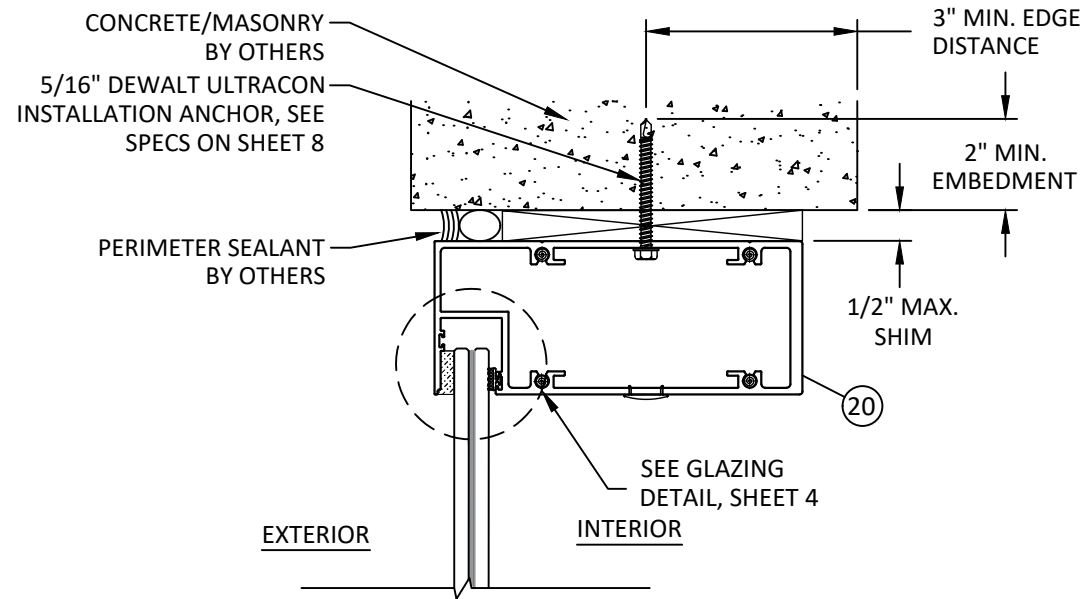
NOMINAL DIMS.		
TRIBUTARY WIDTH (IN.)	MULLION SPAN (IN.)	H1
84	39.5	115.0
60	51.5	115.0
120		100.0
108	63.5	100.0
96	75.5	100.0
84	87.5	100.0
72	97.5	100.0



D
10 VERTICAL SECTION
SILL - CONCRETE/MASONRY SUBSTRATE



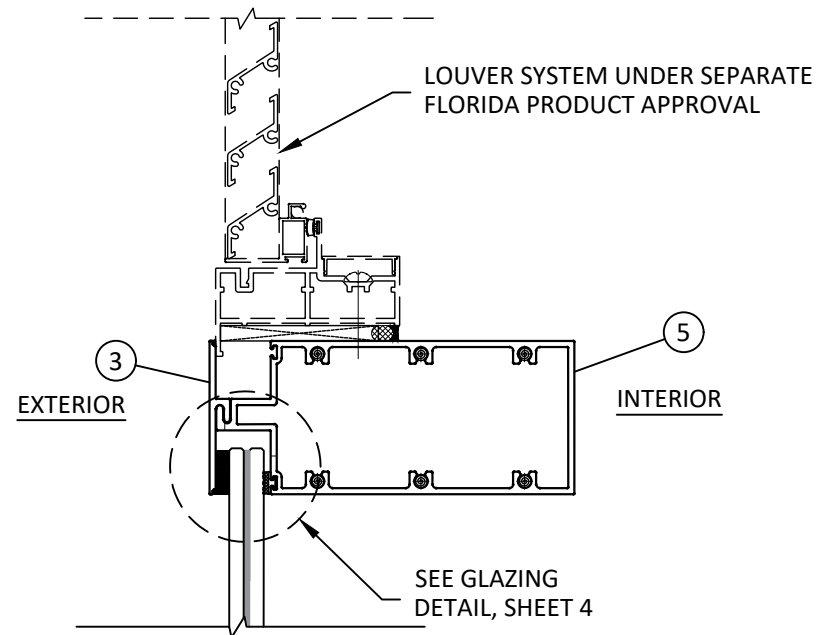
E
10 VERTICAL SECTION
HEAD - 2X WOOD BUCK



F
11

VERTICAL SECTION

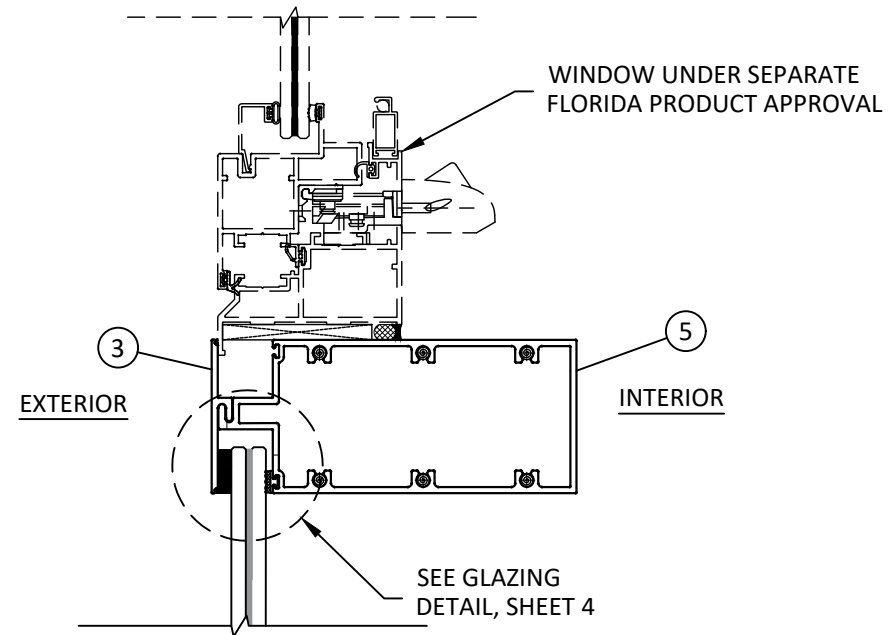
HEAD - CONCRETE/MASONRY SUBSTRATE



H
11

VERTICAL SECTION

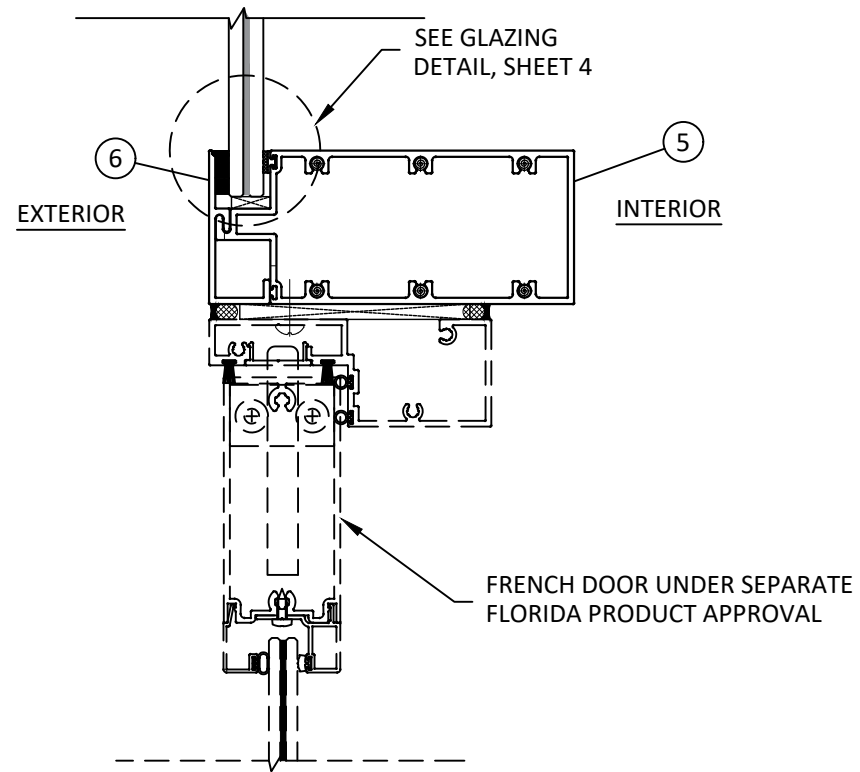
HORIZONTAL MULLION



G
11

VERTICAL SECTION

HORIZONTAL MULLION



I
11

VERTICAL SECTION

HORIZONTAL MULLION

LINEA ROSSA®

WINDOWS & DOORS

1850 NW. 84TH AVE., STE. 114
DORAL, FL 33126
PH: (305)815-8797

TITLE: GLR-U96 & GLR-U97
WINDOW WALL SYSTEMS
(HVHZ)(IMPACT)
VERTICAL SECTIONS

PREPARED BY: BUILDING DROPS, INC.
398 E. DANIA BEACH BLVD., STE. 338
DANIA BEACH, FL 33004
PH: (954)399-8478
FAX: (954)744-4738
WEB: www.buildingdrops.com



REMARKS	BY	DATE

THE INSTALLATION DETAILS DESCRIBED HEREIN ARE GENERIC AND MAY NOT REFLECT ACTUAL CONDITIONS FOR A SPECIFIC SITE. IF SITE CONDITIONS CAUSE INSTALLATION TO DEVIATE FROM THE REQUIREMENTS DETAILED HEREIN, A LICENSED ENGINEER OR ARCHITECT SHALL PREPARE SITE SPECIFIC DOCUMENTS FOR USE WITH THIS DOCUMENT.

HERMES F. NORERO P.E.
FLORIDA P. E. NO. 73778
398 E. DANIA BEACH BLVD., STE. 338
DANIA BEACH, FL 33004
FBPE CERT. OF AUTHORIZATION NO. 29578

FL41922

DATE: 10.06.2023

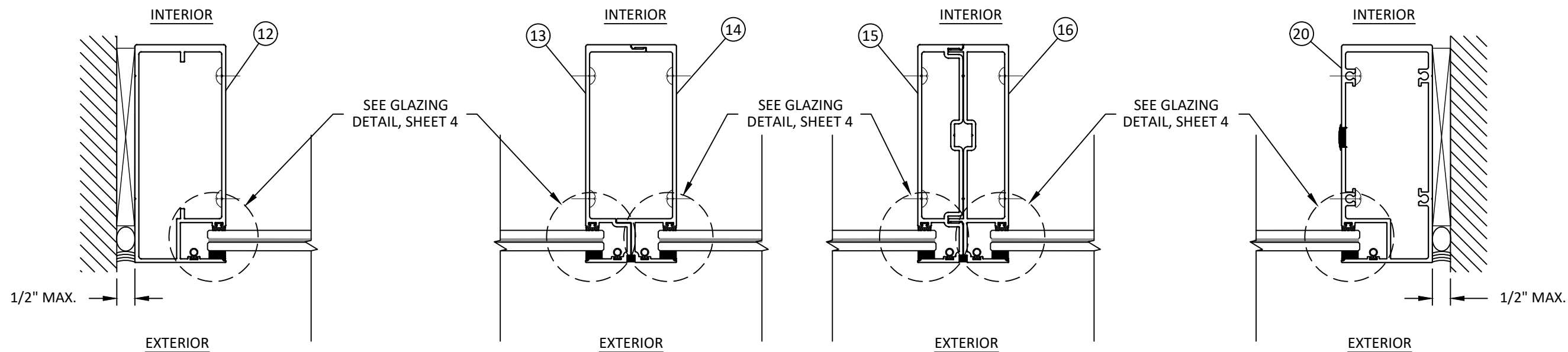
DWG. BY: SH	CHK. BY: HFN
----------------	-----------------

SCALE: NTS

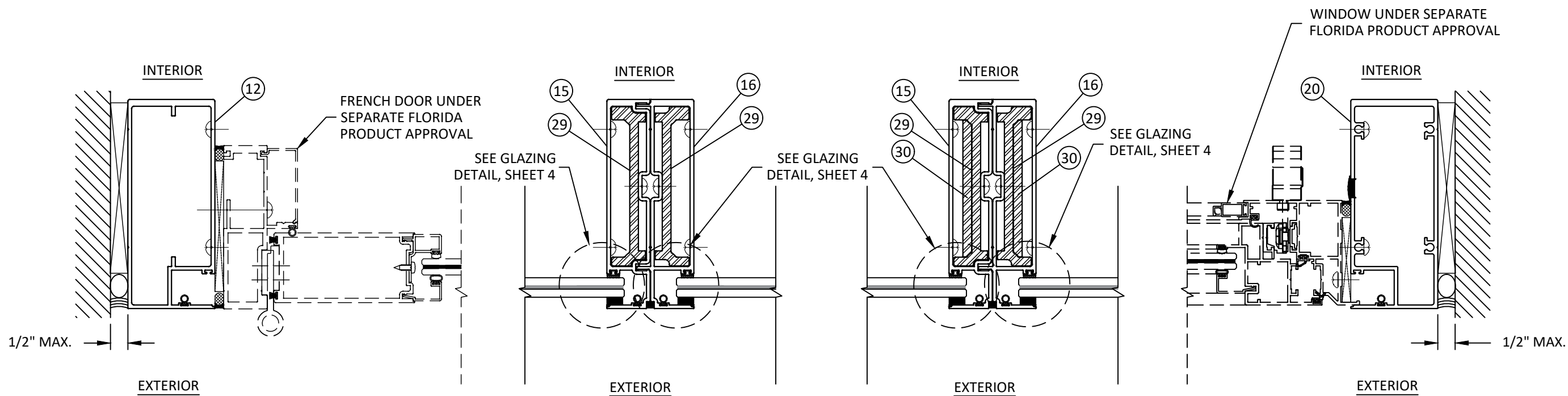
DWG. #: LRA022

SHEET: 11 OF 16

11



J HORIZONTAL SECTION JAMB - J2 **K** HORIZONTAL SECTION MULLION - M1 **L** HORIZONTAL SECTION MULLION - M2 **M** HORIZONTAL SECTION JAMB - J1



N HORIZONTAL SECTION JAMB - J2 **O** HORIZONTAL SECTION MULLION - M3 **P** HORIZONTAL SECTION MULLION - M4 **Q** HORIZONTAL SECTION JAMB - J1

TITLE: GLR-U96 & GLR-U97
WINDOW WALL SYSTEMS
(HVHZ)(IMPACT)
HORIZONTAL SECTIONS

PREPARED BY: BUILDING DROPS, INC.
398 E. DANIA BEACH BLVD., STE. 338
DANIA BEACH, FL 33004
PH: (954)399-8478
FAX: (954)744-4738
WEB: www.buildingdrops.com



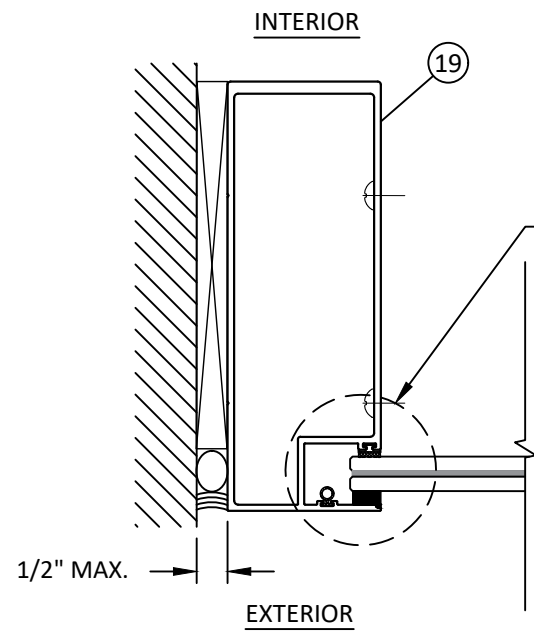
REMARKS	BY	DATE

THE INSTALLATION DETAILS DESCRIBED HEREIN ARE GENERIC AND MAY NOT REFLECT ACTUAL CONDITIONS FOR A SPECIFIC SITE. IF SITE CONDITIONS CAUSE INSTALLATION TO DEVIATE FROM THE REQUIREMENTS DETAILED HEREIN, A LICENSED ENGINEER OR ARCHITECT SHALL PREPARE SITE SPECIFIC DOCUMENTS FOR USE WITH THIS DOCUMENT.

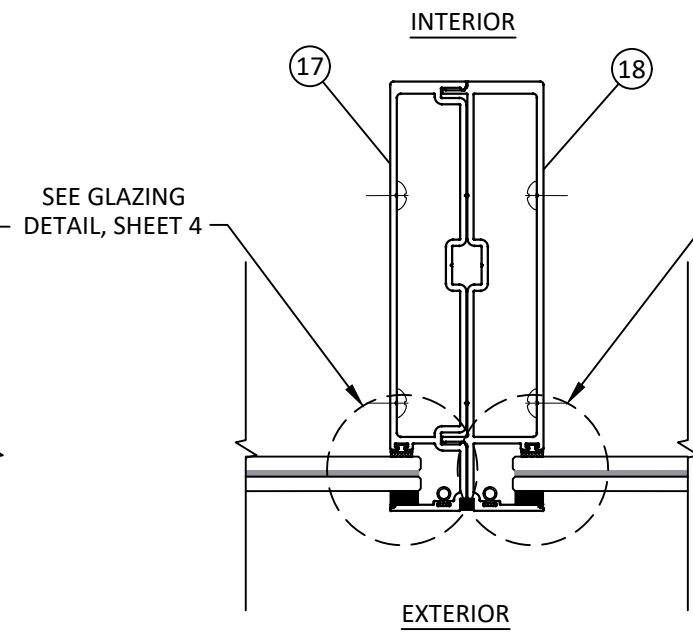
HERMES F. NORERO P.E.
FLORIDA P. E. NO. 73778
398 E. DANIA BEACH BLVD., STE. 338
DANIA BEACH, FL 33004
FBPE CERT. OF AUTHORIZATION NO. 29578

FL41922

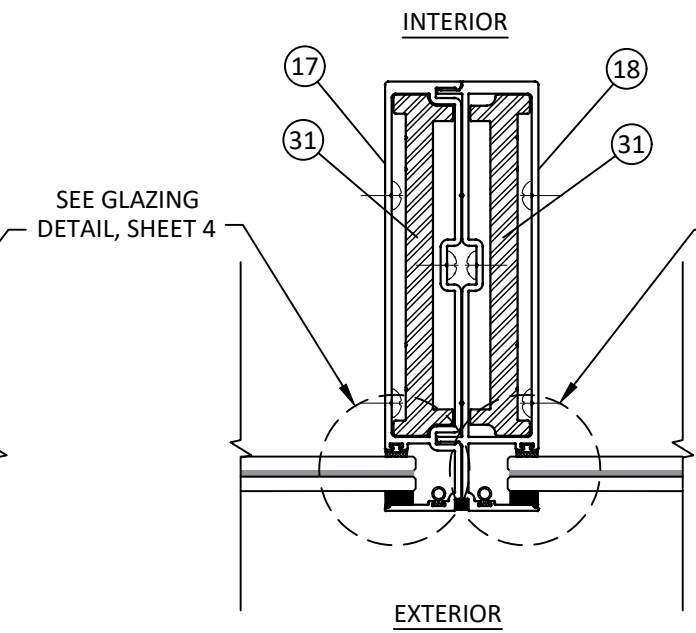
DATE: 10.06.2023	
DWG. BY: SH	CHK. BY: HFN
SCALE: NTS	
DWG. #: LRA022	
SHEET:	OF 16



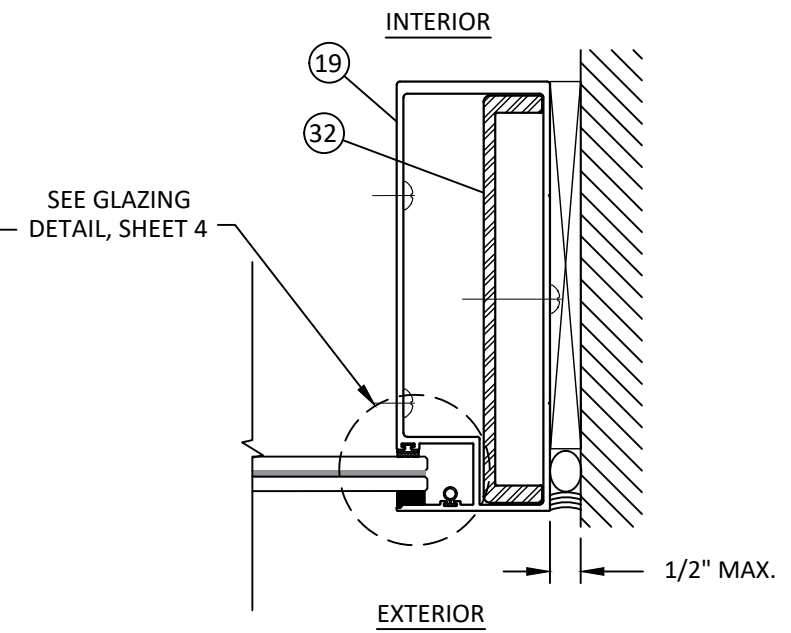
R
13
HORIZONTAL SECTION
JAMB - J3



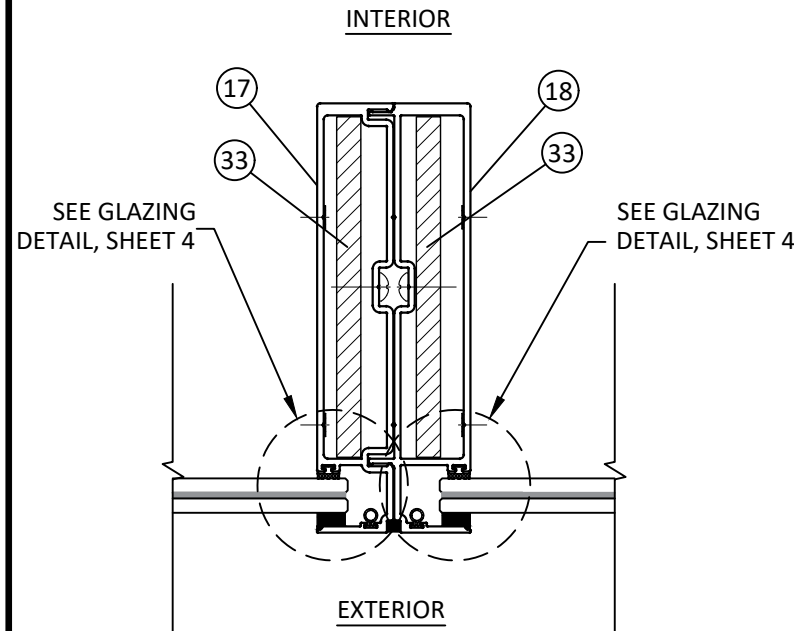
S
13
HORIZONTAL SECTION
MULLION - M5



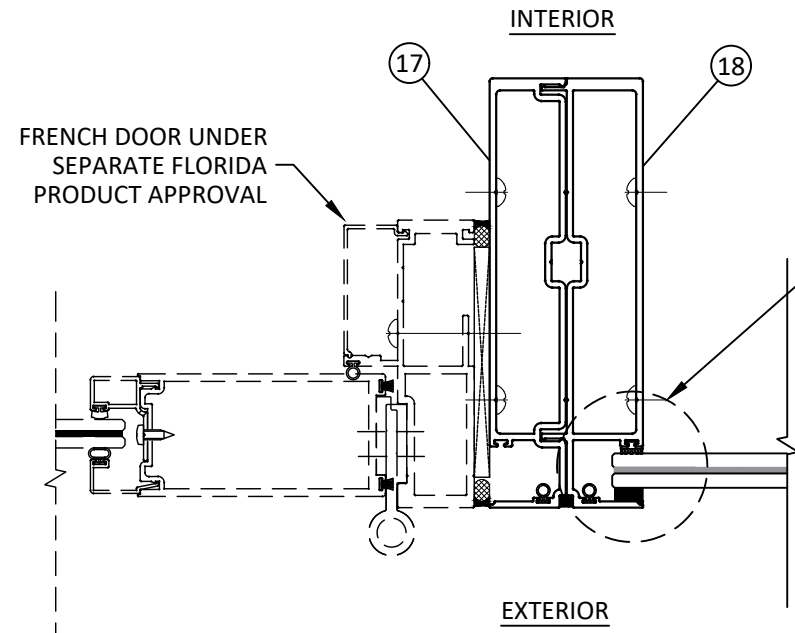
T
13
HORIZONTAL SECTION
MULLION - M6



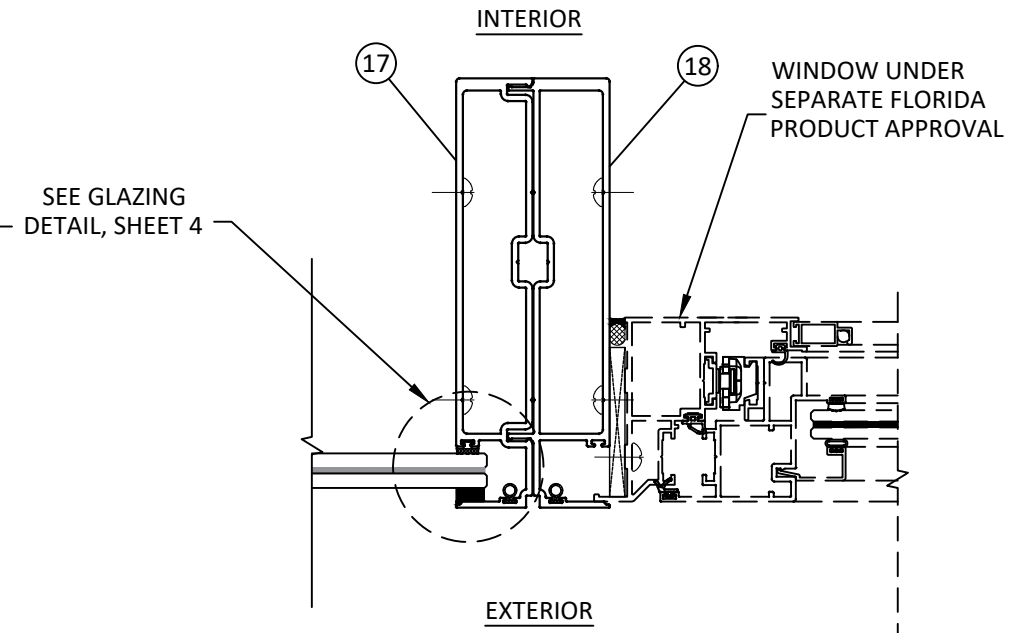
U
13
HORIZONTAL SECTION
JAMB - J4



V
13
HORIZONTAL SECTION
MULLION - M7



W
13
HORIZONTAL SECTION
MULLION - M5



X
13
HORIZONTAL SECTION
MULLION - M5

TITLE:
GLR-U96 & GLR-U97
WINDOW WALL SYSTEMS
(HVHZ)/(IMPACT)
HORIZONTAL SECTIONS

PREPARED BY: **BUILDING DROPS, INC.**
398 E. DANIA BEACH BLVD., STE. 338
DANIA BEACH, FL 33004
PH: (954)399-8478
FAX: (954)744-4738
WEB: www.buildingdrops.com



REMARKS	BY	DATE

THE INSTALLATION DETAILS DESCRIBED HEREIN ARE GENERIC AND MAY NOT REFLECT ACTUAL CONDITIONS FOR A SPECIFIC SITE. IF SITE CONDITIONS CAUSE INSTALLATION TO DEVIATE FROM THE REQUIREMENTS DETAILED HEREIN, A LICENSED ENGINEER OR ARCHITECT SHALL PREPARE SITE SPECIFIC DOCUMENTS FOR USE WITH THIS DOCUMENT.

HERMES F. NORERO P.E.
FLORIDA P. E. NO. 73778
398 E. DANIA BEACH BLVD., STE. 338
DANIA BEACH, FL 33004
FBPE CERT. OF AUTHORIZATION NO. 29578

FL41922

DATE: 10.06.2023

DWG. BY: SH
CHK. BY: HFN

SCALE: NTS

DWG. #: LRA022

SHEET: OF 16

TITLE: GLR-U96 & GLR-U97
WINDOW WALL SYSTEMS
(HVHZ)(IMPACT)
HORIZONTAL SECTIONS

PREPARED BY: BUILDING DROPS, INC.
398 E. DANIA BEACH BLVD., STE. 338
DANIA BEACH, FL 33004
PH: (954)399-8478
FAX: (954)744-4738
WEB: www.buildingdrops.com



REMARKS	BY	DATE

THE INSTALLATION DETAILS DESCRIBED HEREIN ARE GENERIC AND MAY NOT REFLECT ACTUAL CONDITIONS FOR A SPECIFIC SITE. IF SITE CONDITIONS CAUSE INSTALLATION TO DEVIATE FROM THE REQUIREMENTS DETAILED HEREIN, A LICENSED ENGINEER OR ARCHITECT SHALL PREPARE SITE SPECIFIC DOCUMENTS FOR USE WITH THIS DOCUMENT.

HERMES F. NORERO P.E.
FLORIDA P. E. NO. 73778
398 E. DANIA BEACH BLVD., STE. 338
DANIA BEACH, FL 33004
FBPE CERT. OF AUTHORIZATION NO. 29578

FL41922

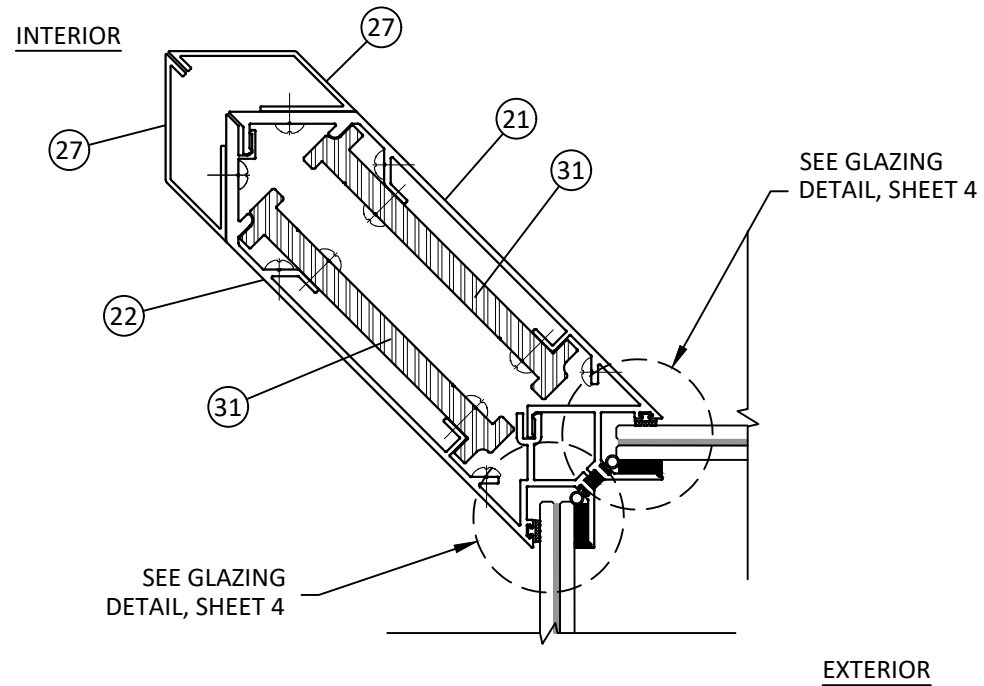
DATE: 10.06.2023

DWG. BY: SH CHK. BY: HFN

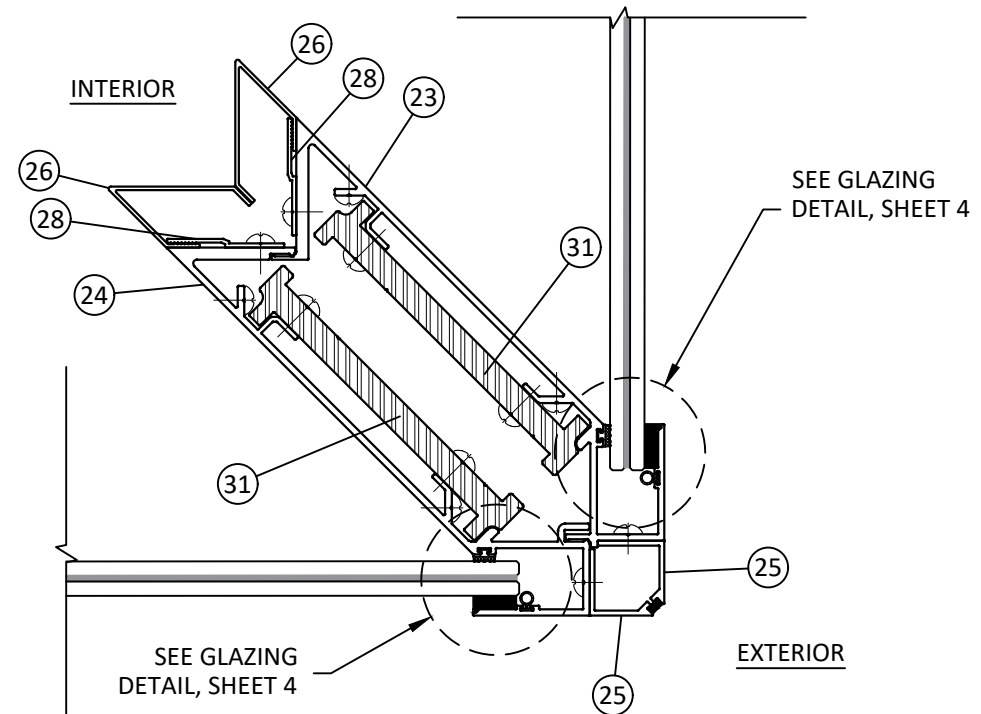
SCALE: NTS

DWG. #: LRA022

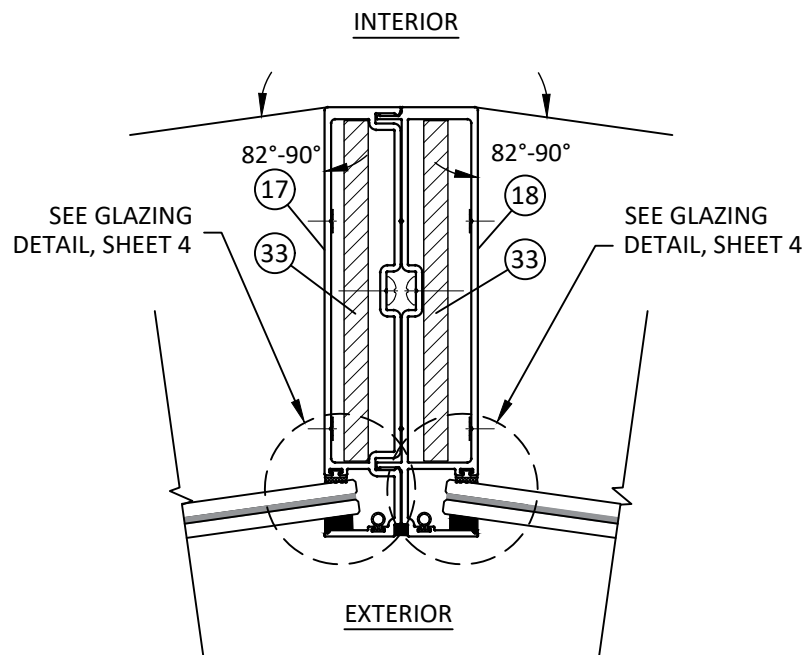
SHEET: OF 16



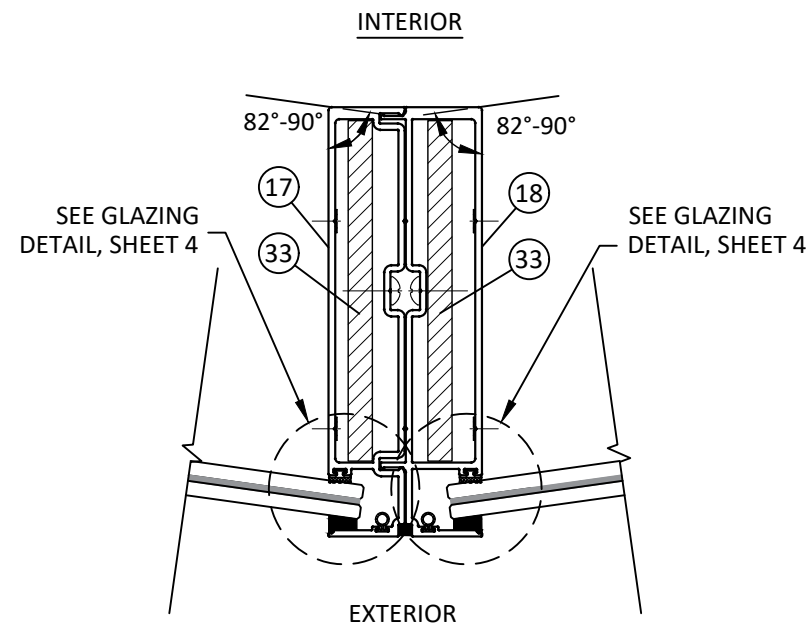
AA
14 HORIZONTAL SECTION
CORNER MULLION - C4



BB
14 HORIZONTAL SECTION
CORNER MULLION - C3



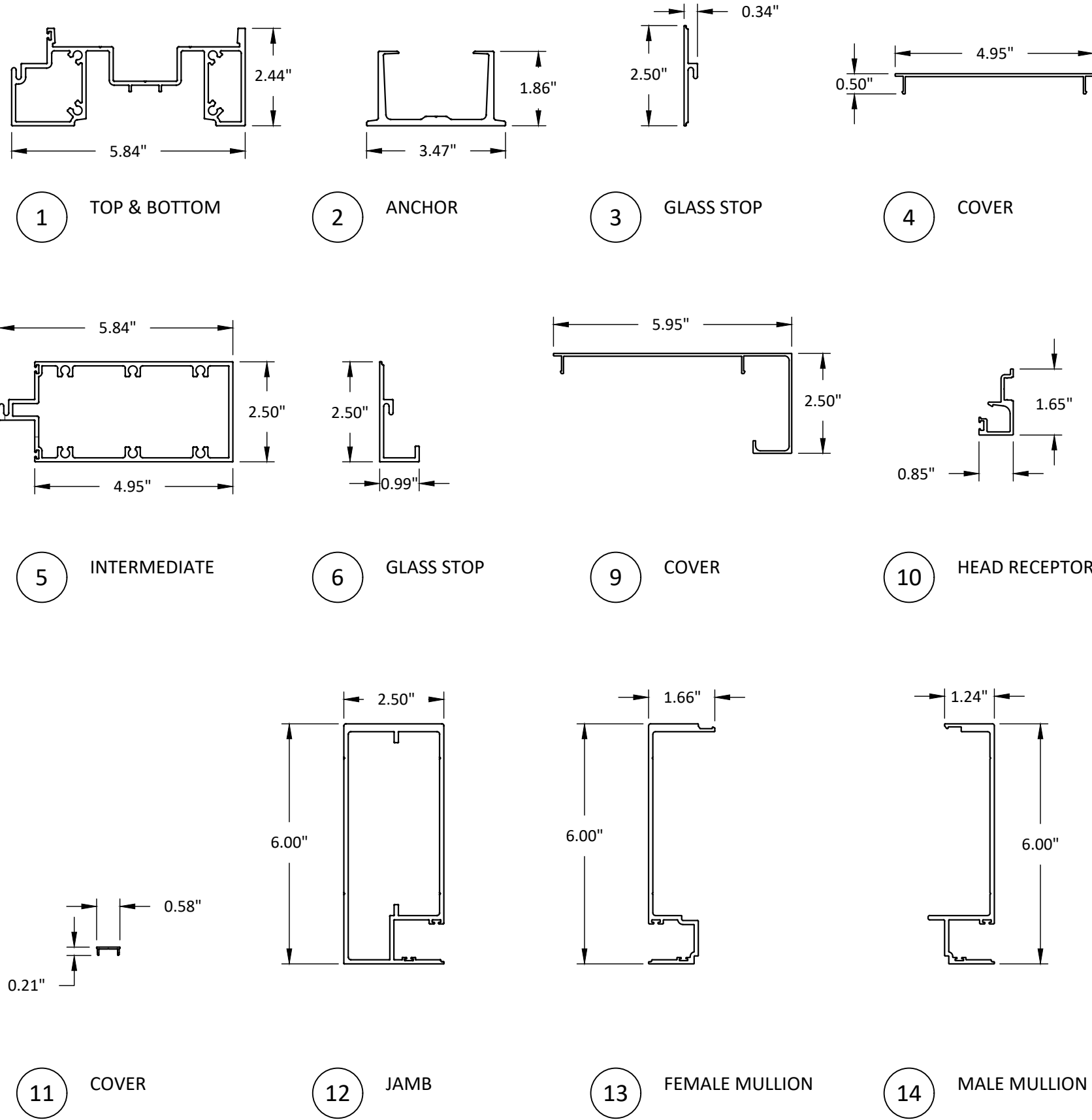
CC
14 HORIZONTAL SECTION
82-90 DEGREE MULLION



DD
14 HORIZONTAL SECTION
82-90 DEGREE MULLION

BILL OF MATERIALS

ITEM	PART NO.	DESCRIPTION	MATERIAL
1	GLR-U96-01	TOP & BOTTOM	6005-T5
2	GLR-U96-02	ANCHOR	6005-T5
3	GLR-U96-03	GLASS STOP	6063-T6
4	GLR-U96-04	COVER	6063-T6
5	GLR-U96-05	INTERMEDIATE	6005-T5
6	GLR-U96-06	GLASS STOP	6063-T6
7	NOT USED	-	-
8	NOT USED	-	-
9	GLR-U97-09	COVER	6063-T6
10	GLR-U96-10	HEAD RECEPTOR	6005-T5
11	GLR-U96-11	COVER	6063-T6
12	GLR-U96-12	JAMB	6005-T5
13	GLR-U96-13	FEMALE MULLION	6005-T5
14	GLR-U96-14	MALE MULLION	6005-T5
15	GLR-U96-15	FEMALE MULLION	6005-T5
16	GLR-U96-16	MALE MULLION	6005-T5
17	GLR-U97-17	FEMALE MULLION	6005-T5
18	GLR-U97-18	MALE MULLION	6005-T5
19	GLR-U97-19	JAMB	6005-T5
20	GLR-U96-20	JAMB	6005-T5
21	GLR-U96-21	INNER CORNER FEMALE MULLION	6005-T5
22	GLR-U97-22	INNER CORNER MALE MULLION	6005-T5
23	GLR-U96-23	OUTER CORNER FEMALE MULLION	6005-T5
24	GLR-U96-24	OUTER CORNER MALE MULLION	6005-T5
25	GLR-U96-25	INNER CORNER FEMALE MULLION	6063-T6
26	GLR-U97-26	INNER CORNER MALE MULLION	6063-T6
27	GLR-U97-27	OUTER CORNER FEMALE MULLION	6063-T6
28	GLR-U97-28	OUTER CORNER MALE MULLION	6063-T6
29	GLR-U96-29	ALUMINUM REINFORCEMENT	6005-T5
30	GLR-U96-30	ALUMINUM REINFORCEMENT	6005-T5
31	GLR-U97-31	ALUMINUM REINFORCEMENT	6005-T5
32	GLR-U97-32	ALUMINUM REINFORCEMENT	6005-T5
33	-	STEEL REINFORCEMENT	STEEL
34	-	#14X1" COUNTERSUNK SCREW	STEEL
35	-	SETTING BLOCK	EPDM
36	-	GLASS GASKET	EPDM
37	-	#14X1" PAN HEAD SMS	STEEL
38	-	WASHER	STEEL
39	-	ADJUSTING BOLT	STEEL
40	NOT USED	-	-
41	-	SCREW	STEEL
42	-	GASKET	EPDM



1850 NW. 84TH AVE., STE. 114
DORAL, FL 33126
PH: (305)815-8797

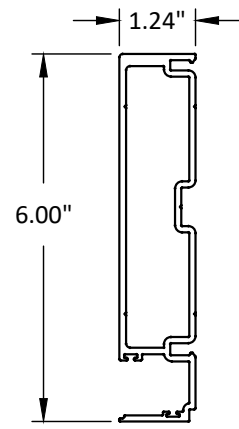
TITLE: **GLR-U96 & GLR-U97 WINDOW WALL SYSTEMS (HVHZ)(IMPACT)**
BILL OF MATERIALS & COMPONENTS
PREPARED BY: **BUILDING DROPS, INC.**
398 E. DANIA BEACH BLVD., STE. 338
DANIA BEACH, FL 33004
PH: (954)399-8478
FAX: (954)744-4738
WEB: www.buildingdrops.com

REMARKS	BY	DATE

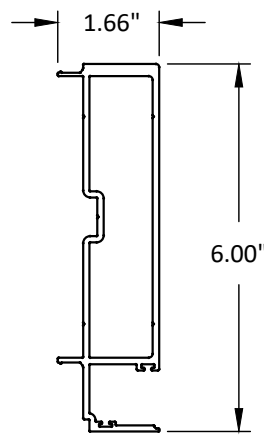
THE INSTALLATION DETAILS DESCRIBED HEREIN ARE GENERIC AND MAY NOT REFLECT ACTUAL CONDITIONS FOR A SPECIFIC SITE. IF SITE CONDITIONS CAUSE INSTALLATION TO DEVIATE FROM THE REQUIREMENTS DETAILED HEREIN, A LICENSED ENGINEER OR ARCHITECT SHALL PREPARE SITE SPECIFIC DOCUMENTS FOR USE WITH THIS DOCUMENT.

HERMES F. NORERO P.E.
FLORIDA P. E. NO. 73778
398 E. DANIA BEACH BLVD., STE. 338
DANIA BEACH, FL 33004
FBPE CERT. OF AUTHORIZATION NO. 29578

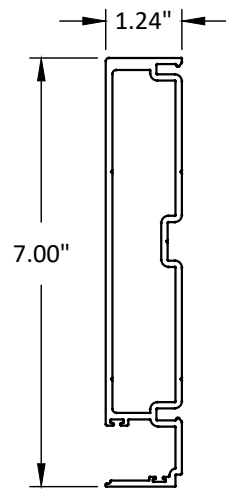
FL41922	
DATE: 10.06.2023	
DWG. BY: SH	CHK. BY: HFN
SCALE: NTS	
DWG. #: LRA022	
SHEET: 15	OF 16



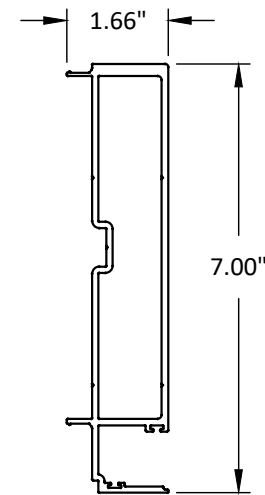
15 FEMALE MULLION



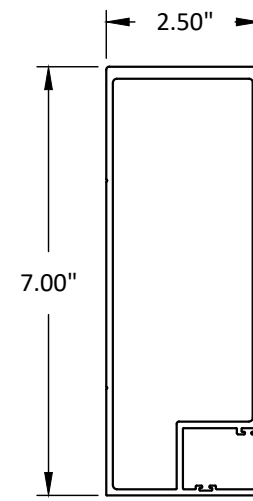
16 MALE MULLION



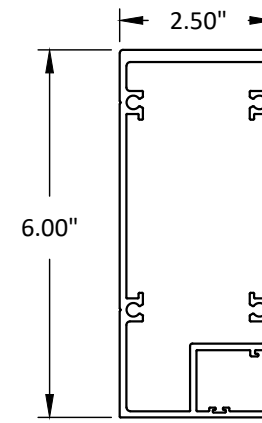
17 FEMALE MULLION



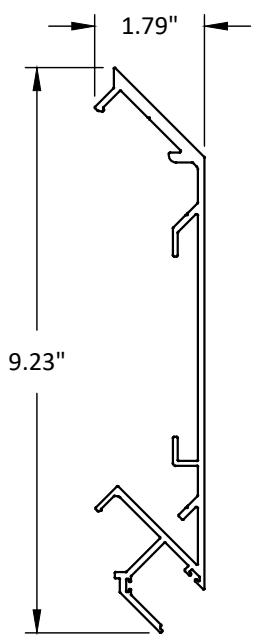
18 MALE MULLION



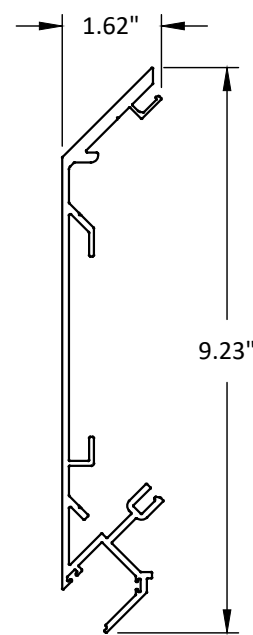
19 JAMB



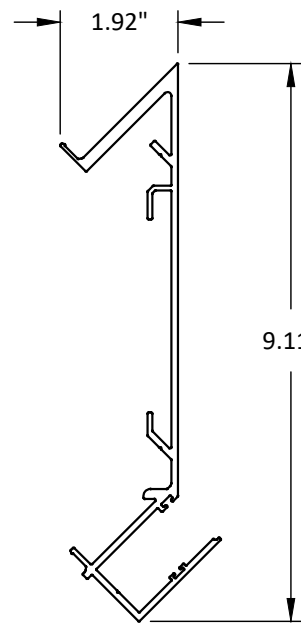
20 JAMB



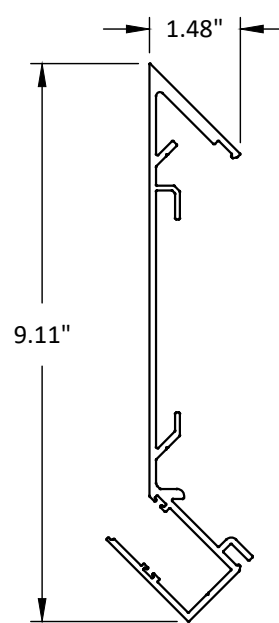
21 INNER CORNER FEMALE MULLION



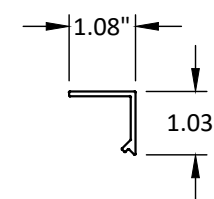
22 INNER CORNER MALE MULLION



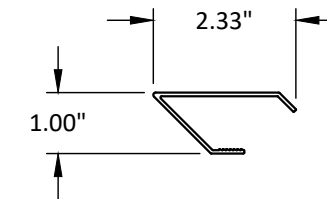
23 OUTER CORNER FEMALE MULLION



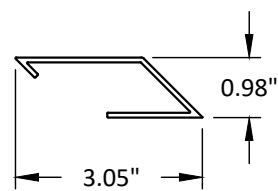
24 OUTER CORNER MALE MULLION



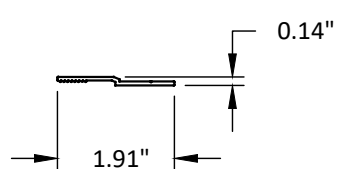
25 INNER CORNER FEMALE MULLION



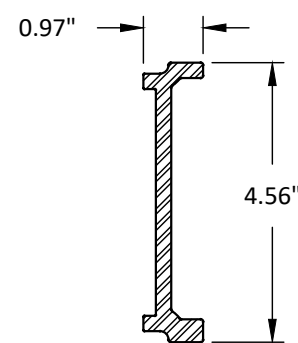
26 INNER CORNER MALE MULLION



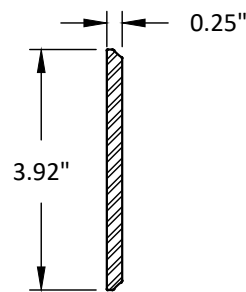
27 OUTER CORNER FEMALE MULLION



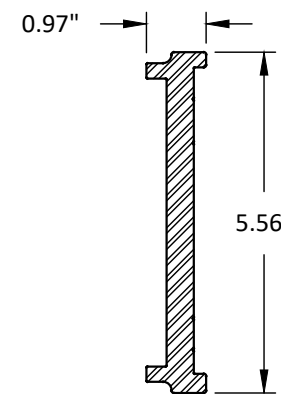
28 OUTER CORNER MALE MULLION



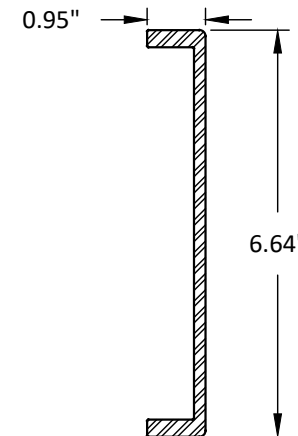
29 ALUMINUM REINFORCEMENT



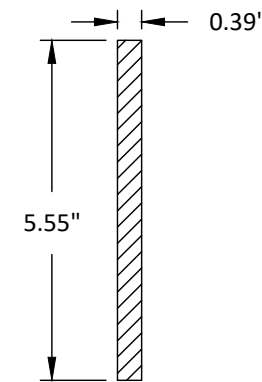
30 ALUMINUM REINFORCEMENT



31 ALUMINUM REINFORCEMENT



32 ALUMINUM REINFORCEMENT



33 STEEL REINFORCEMENT

TITLE: GLR-U96 & GLR-U97
WINDOW WALL SYSTEMS
(HVHZ)(IMPACT)
COMPONENTS

PREPARED BY: BUILDING DROPS, INC.
398 E. DANIA BEACH BLVD., STE. 338
DANIA BEACH, FL 33004
PH: (954)399-8478
FAX: (954)744-4738
WEB: www.buildingdrops.com



REMARKS	BY	DATE

THE INSTALLATION DETAILS DESCRIBED HEREIN ARE GENERIC AND MAY NOT REFLECT ACTUAL CONDITIONS FOR A SPECIFIC SITE. IF SITE CONDITIONS CAUSE INSTALLATION TO DEVIATE FROM THE REQUIREMENTS DETAILED HEREIN, A LICENSED ENGINEER OR ARCHITECT SHALL PREPARE SITE SPECIFIC DOCUMENTS FOR USE WITH THIS DOCUMENT.

HERMES F. NORERO P.E.
FLORIDA P. E. NO. 73778
398 E. DANIA BEACH BLVD., STE. 338
DANIA BEACH, FL 33004
FBPE CERT. OF AUTHORIZATION NO. 29578

FL41922

DATE: 10.06.2023

DWG. BY: SH
CHK. BY: HFN

SCALE: NTS

DWG. #: LRA022

SHEET: OF 16