

# LINEA ROSSA LLC

## LR-230 ALUMINUM SLIDING GLASS DOOR (HVHZ)(IMPACT)

**LINEA ROSSA®**  
WINDOWS & DOORS

1850 NW. 84TH AVE., STE. 114  
DORAL, FL 33126  
PH: (305)815-8797

**INSTALLATION NOTES:**

1. ONE (1) INSTALLATION ANCHOR IS REQUIRED AT EACH ANCHOR LOCATION SHOWN.
2. THE NUMBER OF INSTALLATION ANCHORS DEPICTED IS THE MINIMUM NUMBER OF ANCHORS TO BE USED FOR PRODUCT INSTALLATION OF THE MAXIMUM SIZE LISTED.
3. INSTALL INDIVIDUAL INSTALLATION ANCHORS WITHIN A TOLERANCE OF ±1/2 INCH THE DEPICTED LOCATION & SPACING IN THE ANCHOR LAYOUT DETAILS (I.E., WITHOUT CONSIDERATION OF TOLERANCES). TOLERANCES ARE NOT CUMULATIVE FROM ONE INSTALLATION ANCHOR TO THE NEXT.
4. SHIM AS REQUIRED AT EACH INSTALLATION ANCHOR WITH LOAD BEARING SHIM(S). MAXIMUM ALLOWABLE SHIM STACK TO BE 1/4" INCH. SHIM WHERE SPACE OF 1/16 INCH OR GREATER OCCURS. SHIM(S) SHALL BE CONSTRUCTED OF HIGH DENSITY PLASTIC OR BETTER.
5. FOR MASONRY OR CONCRETE OPENINGS, 1X WOOD BUCK MAY BE USED (OPTIONAL AS LONG AS THE MINIMUM EMBEDMENT AND EDGE DISTANCE REQUIREMENTS ARE STILL MET WITHIN THE CORRESPONDING HOST SUBSTRATE. SEE GENERAL NOTE #3 ON SHEET 1 FOR MORE INFORMATION.
6. MINIMUM EMBEDMENT AND EDGE DISTANCE EXCLUDE WALL FINISHES, INCLUDING BUT NOT LIMITED TO STUCCO, FOAM, BRICK VENEER, AND SIDING.
7. INSTALLATION ANCHORS AND ASSOCIATED HARDWARE MUST BE MADE OF CORROSION RESISTANT MATERIAL OR HAVE A CORROSION RESISTANT COATING.
8. FOR HOLLOW BLOCK AND GROUT FILLED BLOCK, DO NOT INSTALL INSTALLATION ANCHORS INTO MORTAR JOINTS. EDGE DISTANCE IS MEASURED FROM FREE EDGE OF BLOCK OR EDGE OF MORTAR JOINT INTO FACE SHELL OF BLOCK.
9. INSTALLATION ANCHORS SHALL BE INSTALLED IN ACCORDANCE WITH ANCHOR MANUFACTURER'S INSTALLATION INSTRUCTIONS, AND ANCHORS SHALL NOT BE USED IN SUBSTRATES WITH STRENGTHS LESS THAN THE MINIMUM STRENGTH SPECIFIED BY THE ANCHOR MANUFACTURER.

**GENERAL NOTES:**

1. THE PRODUCT SHOWN HEREIN IS DESIGNED AND MANUFACTURED TO COMPLY WITH THE CURRENT EDITION FLORIDA BUILDING CODE (FBC), **INCLUDING** HVHZ AND HAS BEEN EVALUATED ACCORDING TO THE FOLLOWING:
  - TAS 201-94
  - TAS 202-94
  - TAS 203-94
2. ADEQUACY OF THE EXISTING STRUCTURAL CONCRETE/MASONRY, 2X FRAMING, AND METAL FRAMING AS A MAIN WIND FORCE RESISTING SYSTEM CAPABLE OF WITHSTANDING AND TRANSFERRING APPLIED PRODUCT LOADS TO THE FOUNDATION IS THE RESPONSIBILITY OF THE ENGINEER OR ARCHITECT OF RECORD FOR THE PROJECT OF INSTALLATION.
3. 1X AND 2X BUCKS (WHEN USED) SHALL BE DESIGNED AND ANCHORED TO PROPERLY TRANSFER ALL LOADS TO THE STRUCTURE. BUCK DESIGN AND INSTALLATION IS THE RESPONSIBILITY OF THE ENGINEER OR ARCHITECT OF RECORD FOR THE PROJECT OF INSTALLATION.
4. THE INSTALLATION DETAILS DESCRIBED HEREIN ARE GENERIC AND MAY NOT REFLECT ACTUAL CONDITIONS FOR A SPECIFIC SITE. IF SITE CONDITIONS CAUSE INSTALLATION TO DEVIATE FROM THE REQUIREMENTS DETAILED HEREIN, A LICENSED ENGINEER OR ARCHITECT SHALL PREPARE SITE SPECIFIC DOCUMENTS FOR USE WITH THIS DOCUMENT IN NON-HVHZ AREAS.
5. APPROVED IMPACT PROTECTIVE SYSTEM **IS NOT REQUIRED** ON THIS PRODUCT IN AREAS REQUIRING IMPACT RESISTANCE.
6. WINDOW FRAME MATERIAL: ALUMINUM 6063-T6
7. GLASS MEETS THE REQUIREMENTS OF ASTM E 1300 GLASS CHARTS. SEE SHEET 3 FOR GLAZING DETAILS.

TABLE OF CONTENTS	
SHEET	SHEET DESCRIPTION
1	GENERAL NOTES & INSTALLATION NOTES
2	ELEVATION & ANCHOR LAYOUT
3	GLAZING DETAILS & DESIGN PRESSURE TABLES
4	QUALIFIED CONFIGURATIONS
5	VERTICAL SECTIONS
6	VERTICAL SECTIONS & ANCHOR DETAILS
7	HORIZONTAL SECTIONS
8	HORIZONTAL SECTIONS
9	CORNER CONSTRUCTION
10	COMPONENTS
11	BILL OF MATERIALS

MAX. PANEL SIZE		CONFIG.	DESIGN PRESSURE	MISSILE IMPACT RATING
WIDTH	HEIGHT			
47 5/8"	118 1/4"	SEE SHEET 2	+90/-90 PSF	LARGE & SMALL MISSILE IMPACT

TITLE: LR-230 ALUMINUM SLIDING GLASS DOOR (HVHZ)(IMPACT)

GENERAL NOTES & INSTALLATION NOTES

PREPARED BY: BUILDING DROPS, INC.  
 398 E. DANIA BEACH BLVD., STE. 338  
 DANIA BEACH, FL 33004  
 PH: (954)399-8478  
 FAX: (954)744-4738  
 WEB: www.buildingdrops.com



REMARKS	BY	DATE

THE INSTALLATION DETAILS DESCRIBED HEREIN ARE GENERIC AND MAY NOT REFLECT ACTUAL CONDITIONS FOR A SPECIFIC SITE. IF SITE CONDITIONS CAUSE INSTALLATION TO DEVIATE FROM THE REQUIREMENTS DETAILED HEREIN, A LICENSED ENGINEER OR ARCHITECT SHALL PREPARE SITE SPECIFIC DOCUMENTS FOR USE WITH THIS DOCUMENT.

HERMES F. NORERO  
FLORIDA P. E. NO. 73778  
398 E. DANIA BEACH BLVD., STE. 338  
DANIA BEACH, FL 33004  
FBPE CERT. OF AUTHORIZATION NO. 29578

## FL38755

DATE: 10.06.2023

DWG. BY: SH	CHK. BY: HFN
-------------	--------------

SCALE: NTS

DWG. #: LRA015

SHEET: 1 OF 11

# 1

TITLE: LR-230 ALUMINUM SLIDING GLASS DOOR (HVHZ)/(IMPACT)  
ELEVATION AND ANCHOR LAYOUT

PREPARED BY: BUILDING DROPS, INC.  
398 E. DANIA BEACH BLVD., STE. 338  
DANIA BEACH, FL 33004  
PH: (954)399-8478  
FAX: (954)744-4738  
WEB: www.buildingdrops.com



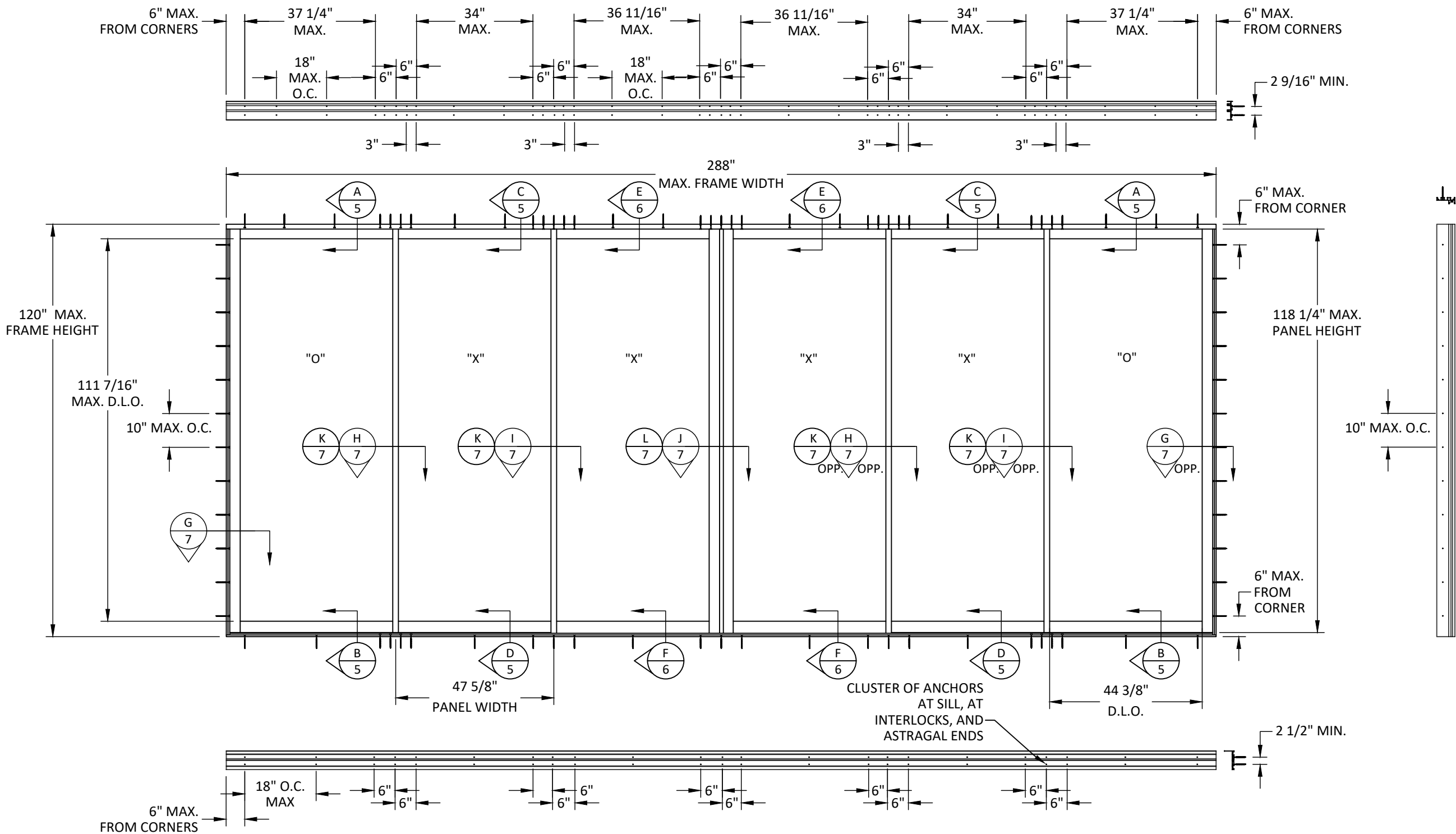
REMARKS	BY	DATE

THE INSTALLATION DETAILS DESCRIBED HEREIN ARE GENERIC AND MAY NOT REFLECT ACTUAL CONDITIONS FOR A SPECIFIC SITE. IF SITE CONDITIONS CAUSE INSTALLATION TO DEVIATE FROM THE REQUIREMENTS DETAILED HEREIN, A LICENSED ENGINEER OR ARCHITECT SHALL PREPARE SITE SPECIFIC DOCUMENTS FOR USE WITH THIS DOCUMENT.

HERMES F. NORERO  
FLORIDA P. E. NO. 73778  
398 E. DANIA BEACH BLVD., STE. 338  
DANIA BEACH, FL 33004  
FBPE CERT. OF AUTHORIZATION NO. 29578

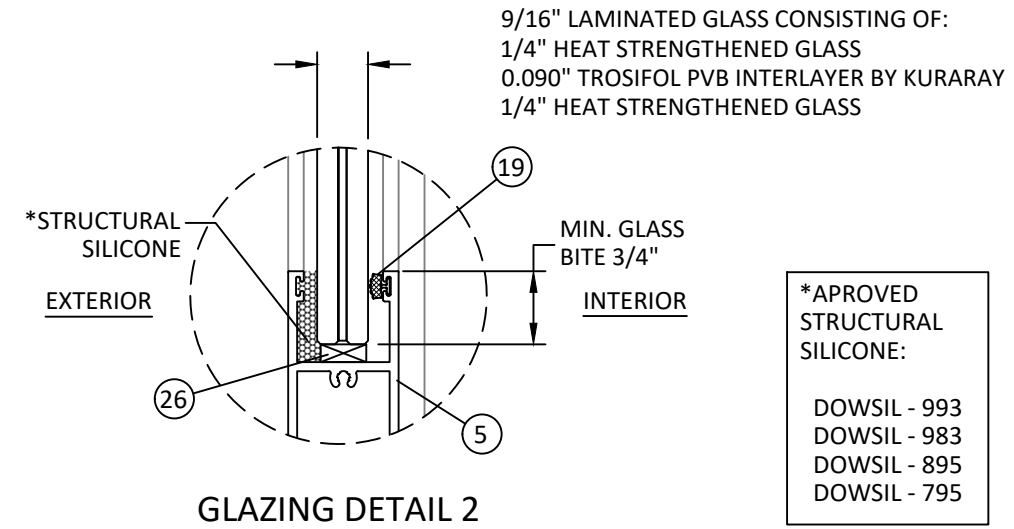
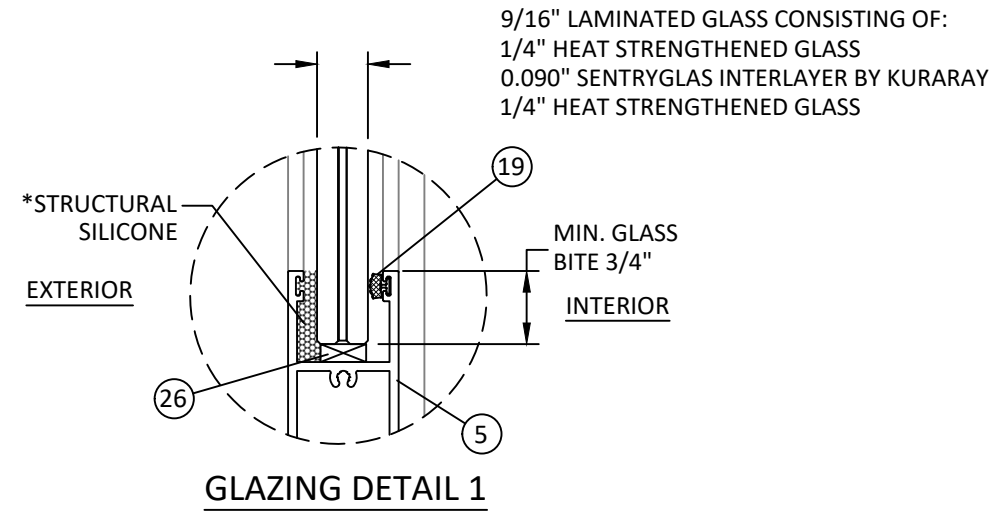
**FL38755**

DATE: 10.06.2023	
DWG. BY: SH	CHK. BY: HFN
SCALE: NTS	
DWG. #: LRA015	
SHEET: 2	OF 11



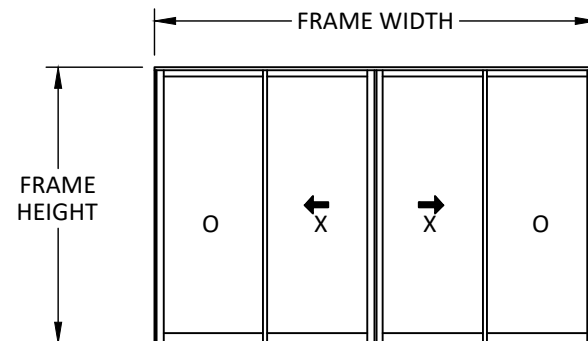
DESIGN PRESSURE TABLE (+/- PSF)			
WINDOW DIMENSIONS		GLASS TYPES G1/G2	
PANEL WIDTH (IN.)	PANEL HEIGHT (IN.)		
23.625	70.25	90.0	
29.625		90.0	
35.625		90.0	
41.625		90.0	
47.625		90.0	
53.625		79.9	
59.625		71.9	
65.625		65.3	
71.625		61.0	
77.625		61.0	
23.625	76.25	90.0	
29.625		90.0	
35.625		90.0	
41.625		90.0	
47.625		90.0	
53.625		79.9	
59.625		71.9	
65.625		65.3	
71.625		59.8	
23.625		82.25	90.0
29.625	90.0		
35.625	90.0		
41.625	90.0		
47.625	90.0		
53.625	79.9		
59.625	71.9		
65.625	65.3		
23.625	88.25		90.0
29.625			90.0
35.625		90.0	
41.625		90.0	
47.625		90.0	
53.625		79.9	
59.625		71.9	

DESIGN PRESSURE TABLE (+/- PSF)		
WINDOW DIMENSIONS		GLASS TYPES G1/G2
PANEL WIDTH (IN.)	PANEL HEIGHT (IN.)	
23.625	94.25	90.0
29.625		90.0
35.625		90.0
41.625		90.0
47.625		90.0
53.625		79.9
59.625	71.9	
23.625	100.25	90.0
29.625		90.0
35.625		90.0
41.625		90.0
47.625		90.0
53.625		79.9
23.625	106.25	90.0
29.625		90.0
35.625		90.0
41.625		90.0
47.625		90.0
53.625		79.9
23.625	112.25	90.0
29.625		90.0
35.625		90.0
41.625		90.0
47.625		90.0
53.625		79.9
23.625	118.25	90.0
29.625		90.0
35.625		90.0
41.625		90.0
47.625		90.0
53.625		79.9



\*APPROVED  
STRUCTURAL  
SILICONE:  
  
DOWSIL - 993  
DOWSIL - 983  
DOWSIL - 895  
DOWSIL - 795

- GLAZING NOTES:
- GLASS TYPE COMPLIES WITH ASTM E1300 REQUIREMENTS AS WELL AS APPLICABLE SAFETY GLAZING REQUIREMENTS PER THE FBC. TEMPER AND SAFETY GLAZING REQUIREMENTS SHALL BE REVIEWED ON A SITE SPECIFIC BASIS.
  - SETTING BLOCK DUROMETER HARDNESS OF 70-90 (SHORE A) AS REFERENCED IN FBC CHAPTER 24.
  - TWO APPROVED SETTING BLOCKS SHALL BE USED FOR GLASS WIDER THAN 36" AS PER FBC CHAPTER 24.
  - D.L.O. AND DESIGN PRESSURES MAY NOT EXCEED MAX VALUES IN DP TABLE ON SHEET 1, AND ELEVATIONS ON SHEET 2.



AVERG. PANEL WIDTH =  $\frac{\text{FRAME WIDTH}}{\text{NO. OF PANELS}}$

PANEL HEIGHT = FRAME HEIGHT - 1-3/4"

TITLE: LR-230 ALUMINUM SLIDING GLASS DOOR (HVHZ)/(IMPACT)  
GLAZING DETAILS & DESIGN PRESSURE TABLES

PREPARED BY: BUILDING DROPS, INC.  
398 E. DANIA BEACH BLVD., STE. 338  
DANIA BEACH, FL 33004  
PH: (954)399-8478  
FAX: (954)744-4738  
WEB: www.buildingdrops.com

REMARKS	BY	DATE

THE INSTALLATION DETAILS DESCRIBED HEREIN ARE GENERIC AND MAY NOT REFLECT ACTUAL CONDITIONS FOR A SPECIFIC SITE. IF SITE CONDITIONS CAUSE INSTALLATION TO DEVIATE FROM THE REQUIREMENTS DETAILED HEREIN, A LICENSED ENGINEER OR ARCHITECT SHALL PREPARE SITE SPECIFIC DOCUMENTS FOR USE WITH THIS DOCUMENT.

HERMES F. NORERO  
FLORIDA P. E. NO. 73778  
398 E. DANIA BEACH BLVD., STE. 338  
DANIA BEACH, FL 33004  
FBPE CERT. OF AUTHORIZATION NO. 29578

**FL38755**

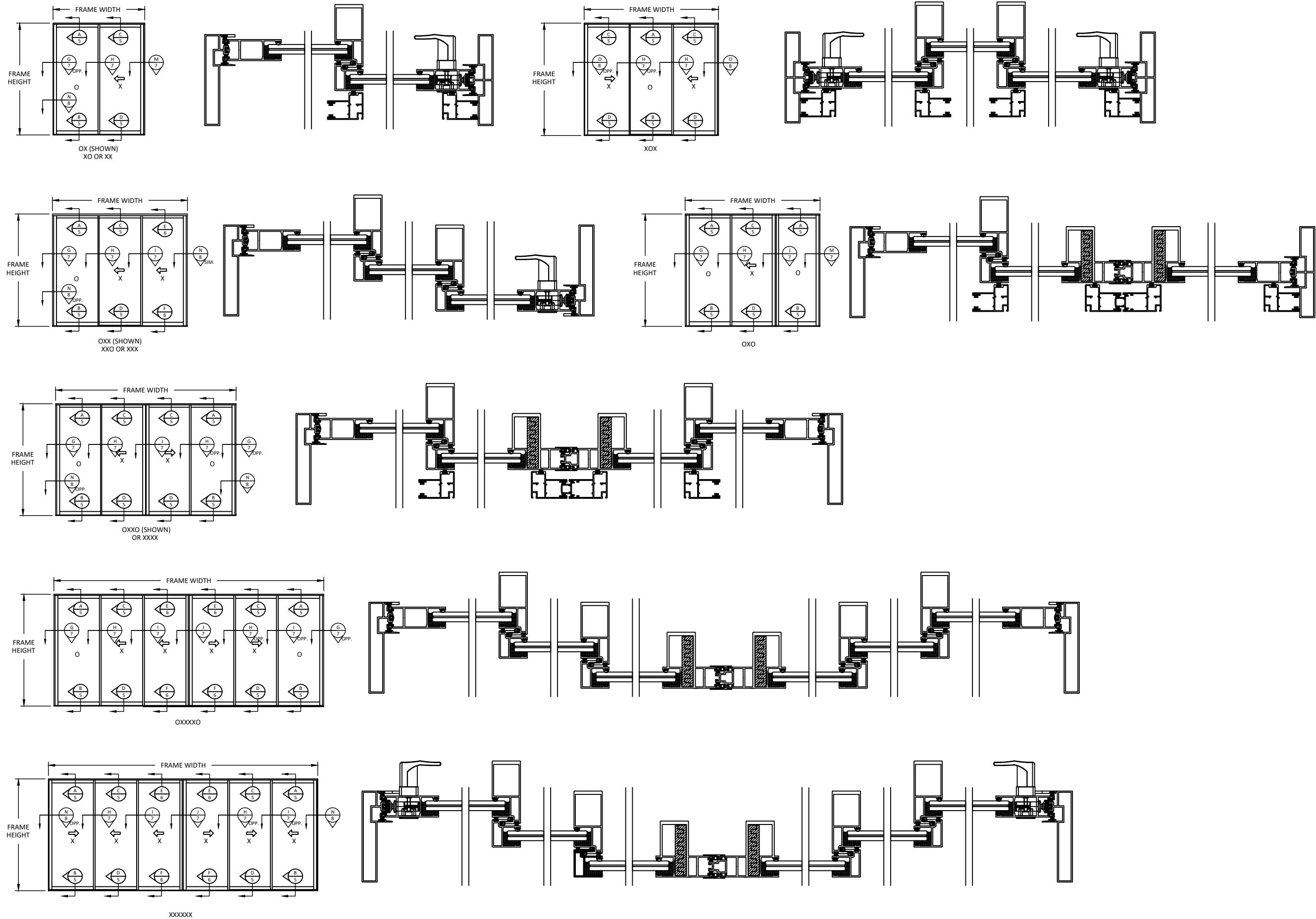
DATE: 10.06.2023

DWG. BY: SH      CHK. BY: HFN

SCALE: NTS

DWG. #: LRA015

SHEET:                      OF 11



TITLE: LR-230 ALUMINUM SLIDING GLASS DOOR (HVHZ)(IMPACT)  
QUALIFIED CONFIGURATIONS

PREPARED BY: BUILDING DROPS, INC.

398 E. DANIA BEACH BLVD., STE. 338  
DANIA BEACH, FL 33004  
PH: (954)399-8478  
FAX: (954)744-4738  
WEB: www.buildingdrops.com



REMARKS	BY	DATE

THE INSTALLATION DETAILS DESCRIBED HEREIN ARE GENERIC AND MAY NOT REFLECT ACTUAL CONDITIONS FOR A SPECIFIC SITE. IF SITE CONDITIONS CAUSE INSTALLATION TO DEVIATE FROM THE REQUIREMENTS DETAILED HEREIN, A LICENSED ENGINEER OR ARCHITECT SHALL PREPARE SITE SPECIFIC DOCUMENTS FOR USE WITH THIS DOCUMENT.

HERMES F. NORERO  
FLORIDA P. E. NO. 73778  
398 E. DANIA BEACH BLVD., STE. 338  
DANIA BEACH, FL 33004  
FBPE CERT. OF AUTHORIZATION NO. 29578

**FL38755**

DATE: 10.06.2023	
DWG. BY: SH	CHK. BY: HFN
SCALE: NTS	
DWG. #: LRA015	
SHEET: 4	OF 11

TITLE: LR-230 ALUMINUM SLIDING GLASS DOOR (HVHZ)(IMPACT)  
VERTICAL SECTIONS

PREPARED BY: BUILDING DROPS, INC.  
398 E. DANIA BEACH BLVD., STE. 338  
DANIA BEACH, FL 33004  
PH: (954)399-8478  
FAX: (954)744-4738  
WEB: www.buildingdrops.com



REMARKS	BY	DATE

THE INSTALLATION DETAILS DESCRIBED HEREIN ARE GENERIC AND MAY NOT REFLECT ACTUAL CONDITIONS FOR A SPECIFIC SITE. IF SITE CONDITIONS CAUSE INSTALLATION TO DEVIATE FROM THE REQUIREMENTS DETAILED HEREIN, A LICENSED ENGINEER OR ARCHITECT SHALL PREPARE SITE SPECIFIC DOCUMENTS FOR USE WITH THIS DOCUMENT.

HERMES F. NORERO  
FLORIDA P. E. NO. 73778  
398 E. DANIA BEACH BLVD., STE. 338  
DANIA BEACH, FL 33004  
FBPE CERT. OF AUTHORIZATION NO. 29578

**FL38755**

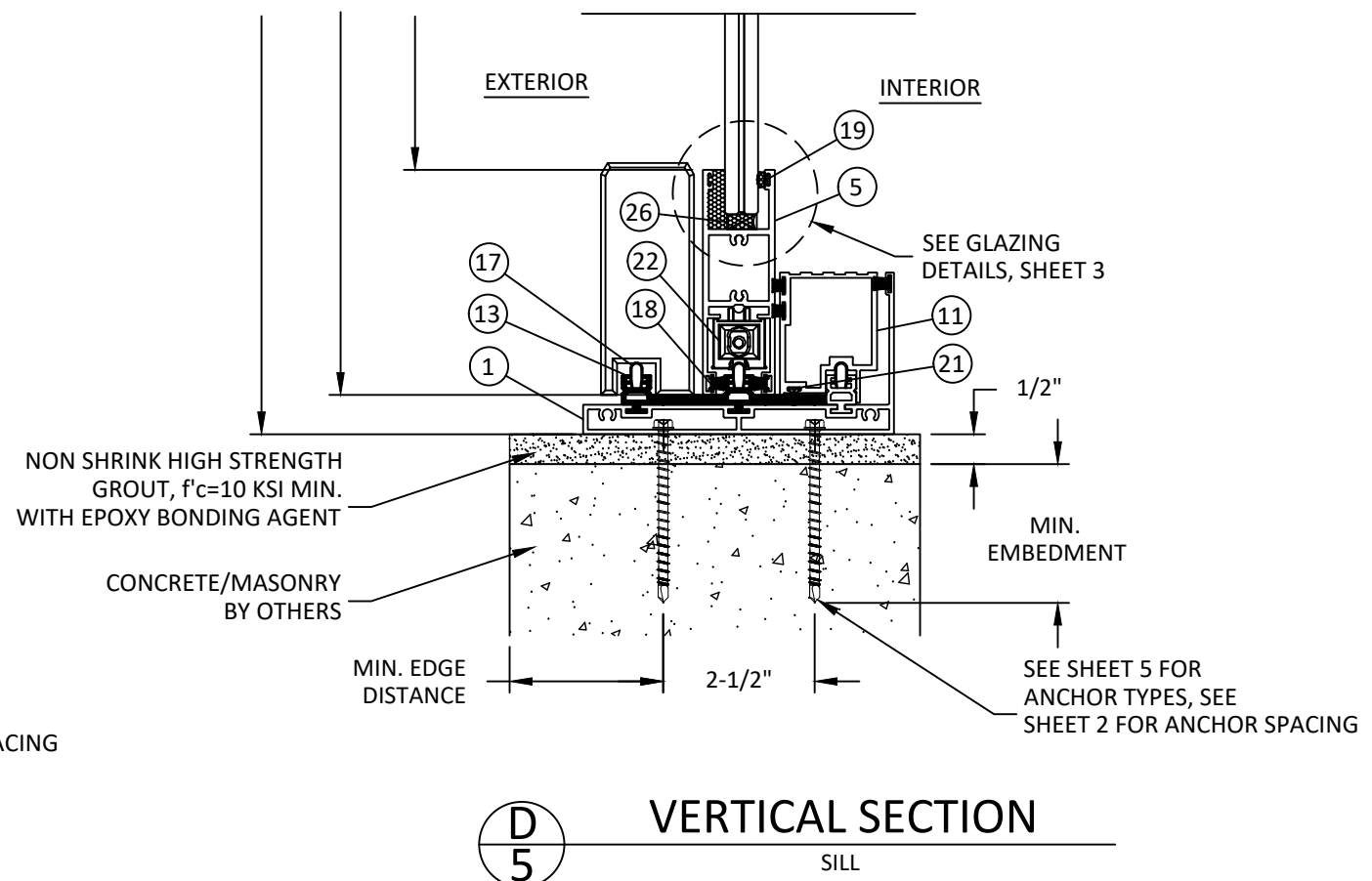
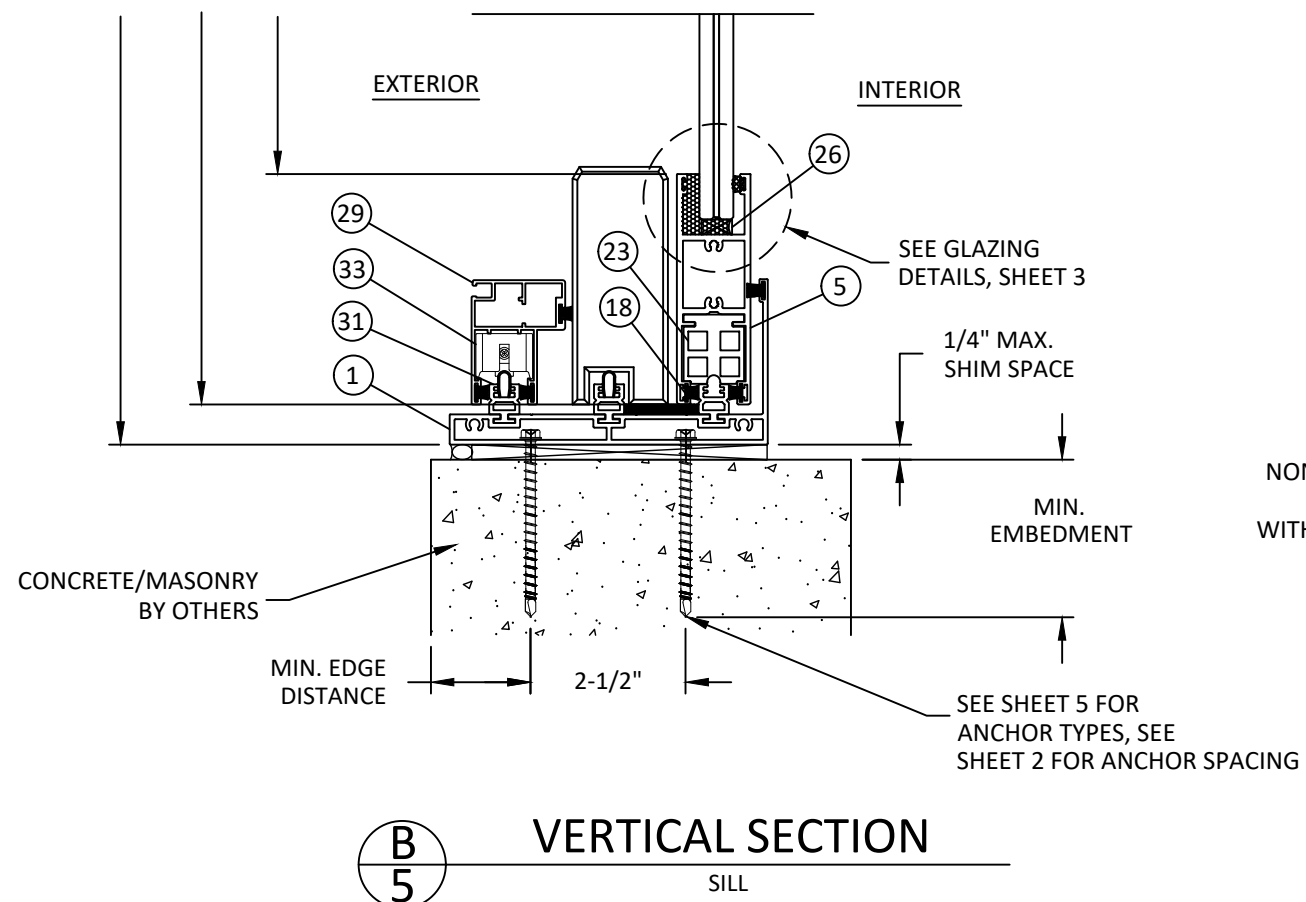
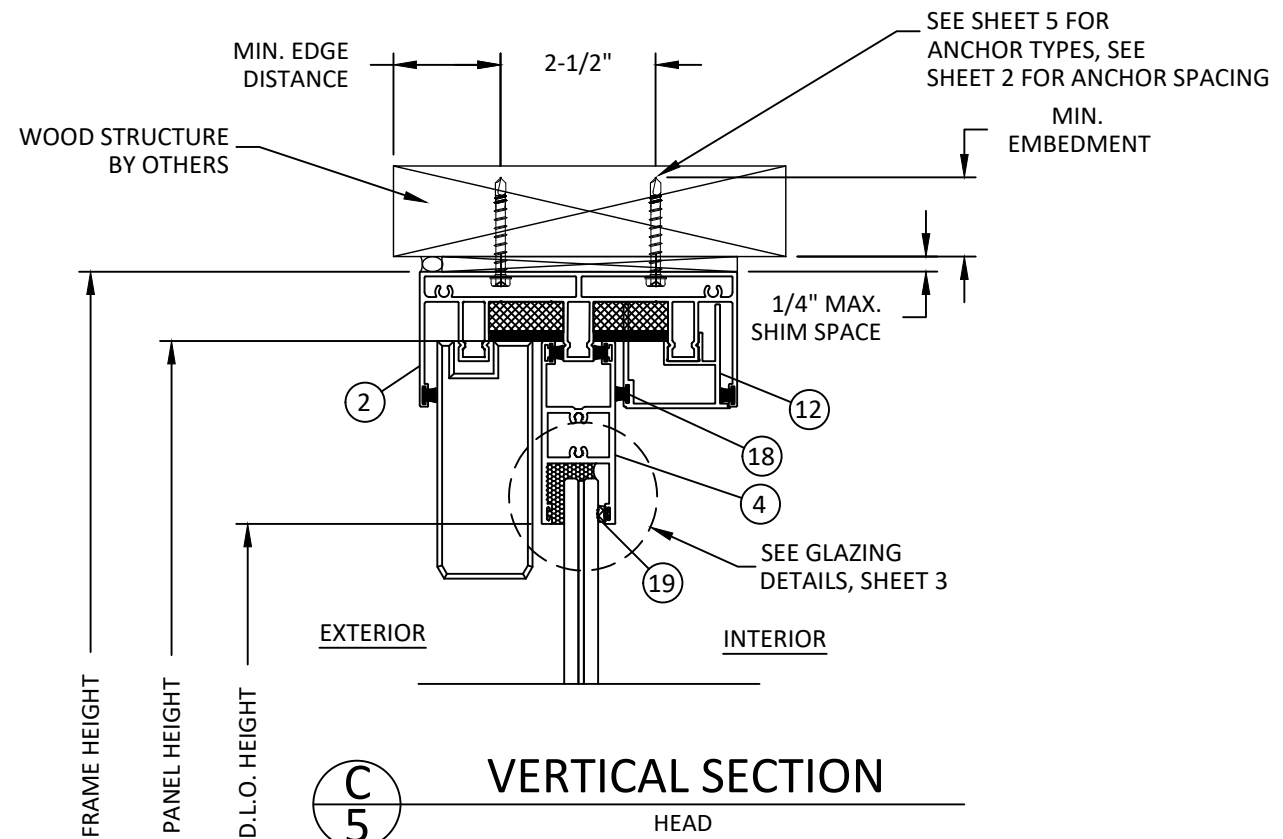
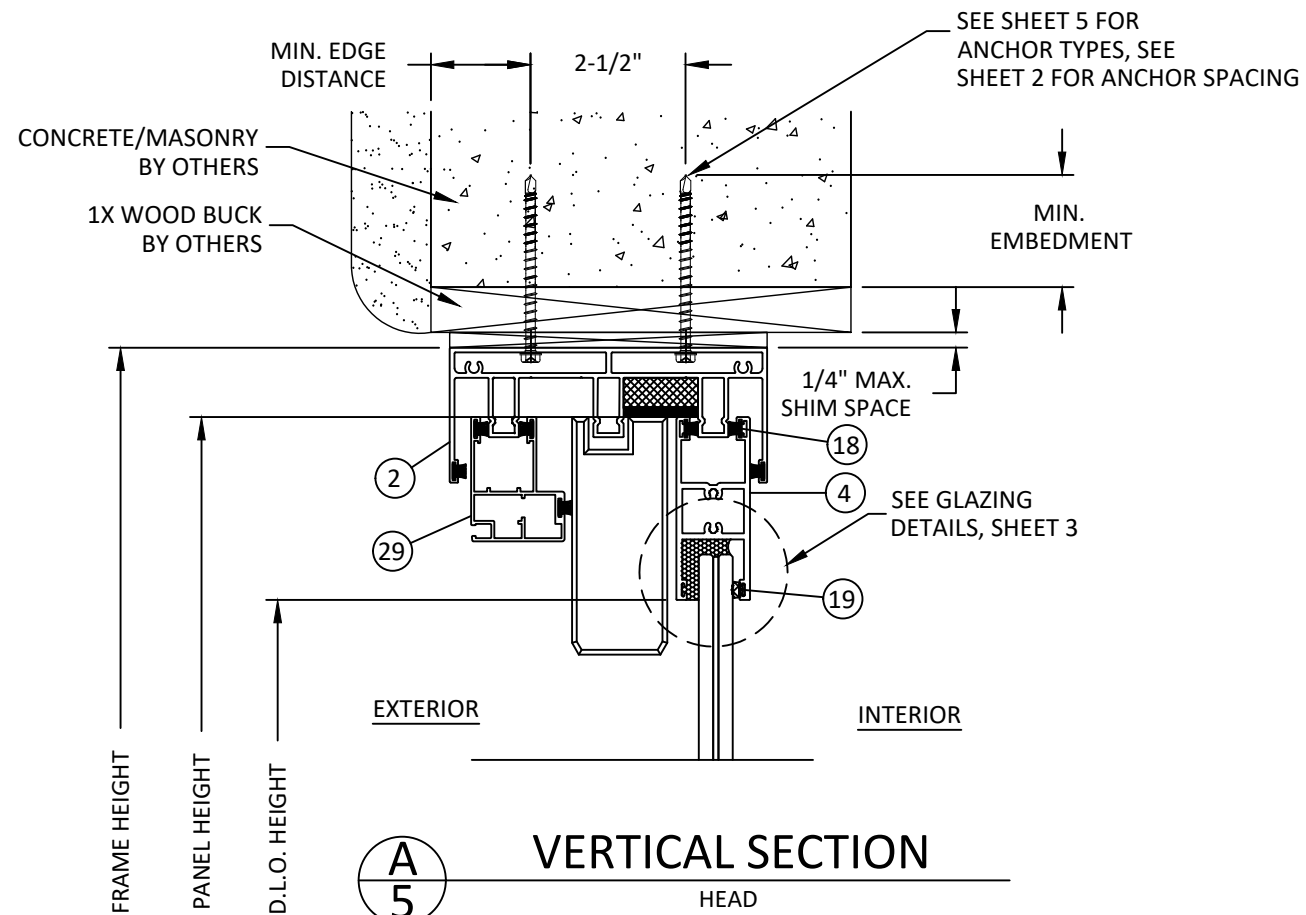
DATE: 10.06.2023

DWG. BY: SH  
CHK. BY: HFN

SCALE: NTS

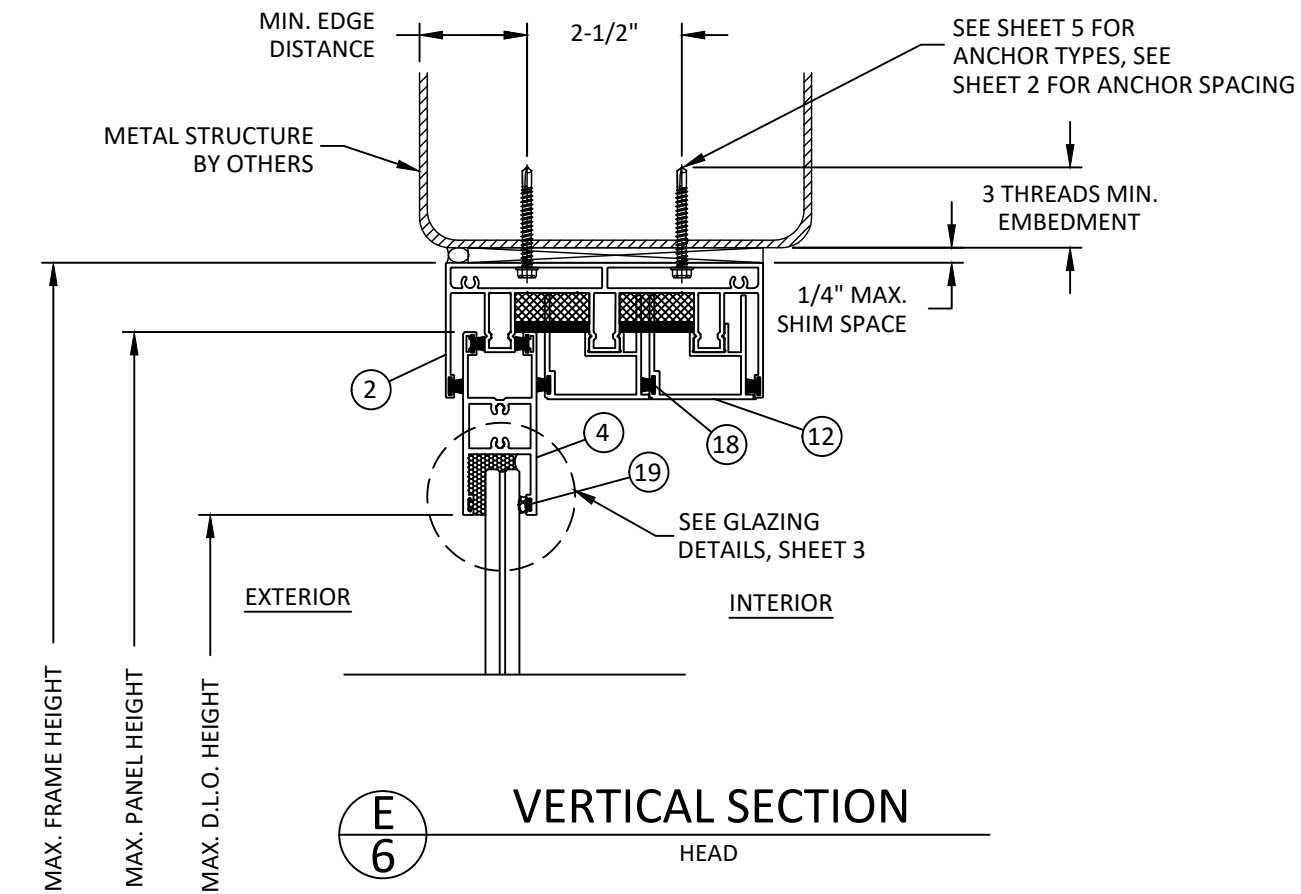
DWG. #: LRA015

SHEET: 5 OF 11



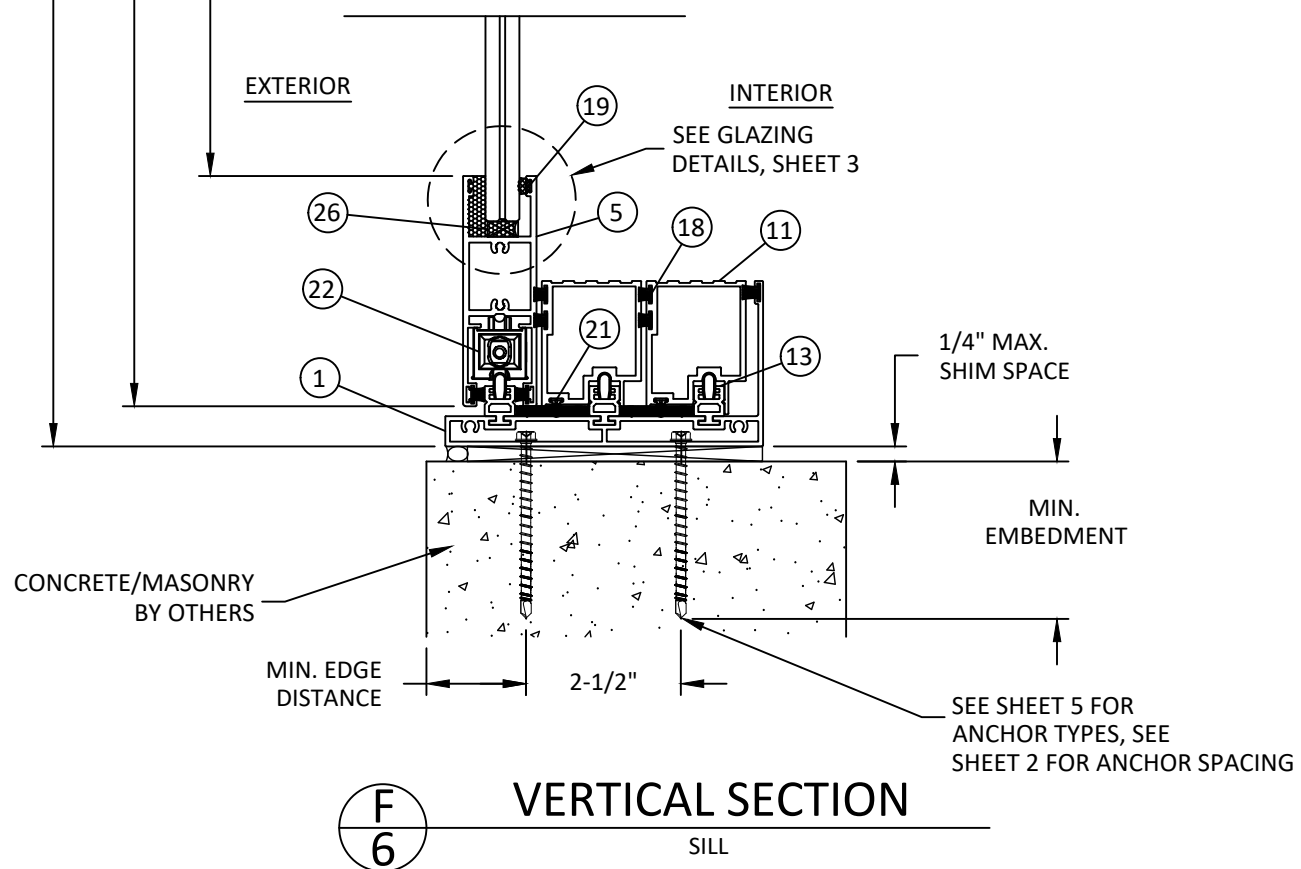
TITLE: LR-230 ALUMINUM SLIDING GLASS DOOR (HVHZ)/(IMPACT)  
VERTICAL SECTIONS & ANCHOR DETAILS

PREPARED BY: BUILDING DROPS, INC.  
398 E. DANIA BEACH BLVD., STE. 338  
DANIA BEACH, FL 33004  
PH: (954)399-8478  
FAX: (954)744-4738  
WEB: www.buildingdrops.com



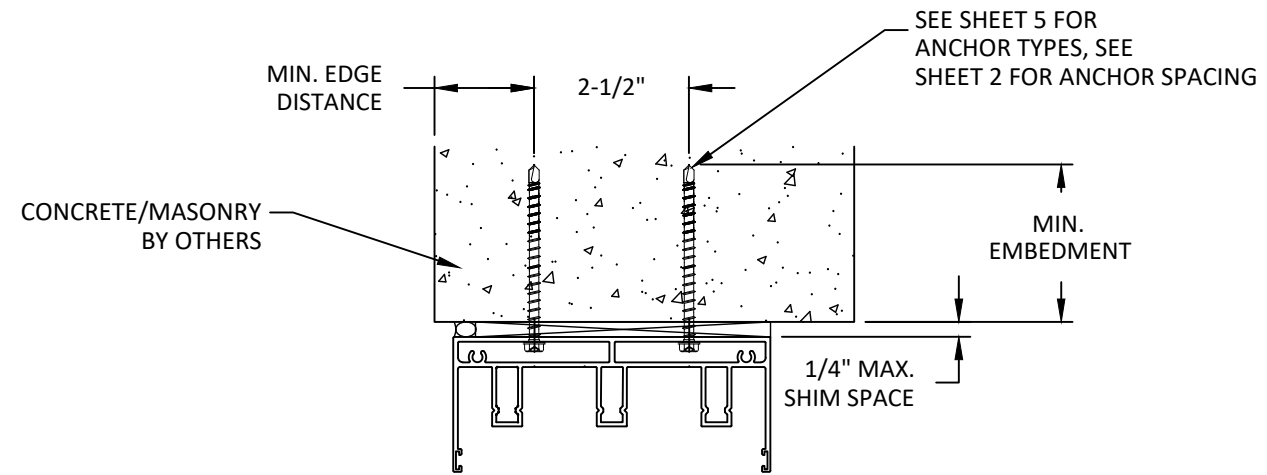
**VERTICAL SECTION**

HEAD



**VERTICAL SECTION**

SILL



**ANCHOR TYPES: (SEE ELEVATIONS FOR SPACING)**

TYPE 'A' -- 1/4" DIA. ULTRACON+ BY 'DEWALT' (Fu=164 KSI, Fy=148 KSI)  
INTO 2 BY WOOD BUCKS OR WOOD STRUCTURES.  
1 1/2" MIN. PENETRATION INTO WOOD

THRU 1 BY BUCKS INTO CONCRETE OR BLOCKS  
1 3/4" MIN. EMBED INTO CONCRETE  
1 3/4" MIN. EMBED IN TO BLOCKS (JAMB ONLY)

DIRECTLY INTO CONCRETE OR BLOCKS  
1 3/4" MIN. EMBED INTO CONCRETE  
1 3/4" MIN. EMBED INTO HOLLOW /GROUT FILLED BLOCK (JAMB ONLY)

TYPE 'B' -- 1/4" DIA. DRILL FLEX -TEKS (GRADE 5) (Fu=120 KSI, Fy=92 KSI)  
INTO FBC APPROVED MULLIONS (1/8" THK. MIN.) (6063-T6 MIN)  
OR INTO METAL STRUCTURES, STEEL: 1/8" THK. MIN. (Fy=36 KSI MIN.)  
(3) THREADS MIN. TO EXTEND BEYOND METAL THICKNESS  
(STEEL IN CONTACT WITH ALUMINUM TO BE PLATED OR PAINTED)

**MIN. EDGE DISTANCES:**

INTO CONCRETE = 2-1/2" MIN.  
INTO METAL STRUCTURE = 3/4" MIN.  
INTO WOOD STRUCTURE = 1" MIN.  
WOOD AT HEAD OR JAMBS SG = 0.55 MIN.  
CONCRETE AT HEAD, SILL OR JAMB f'c=3000PSI MIN.  
C-90 HOLLOW/ FILLED BLOCK AT JAMBS f'm=2000 PSI MIN.

REMARKS	BY	DATE

THE INSTALLATION DETAILS DESCRIBED HEREIN ARE GENERIC AND MAY NOT REFLECT ACTUAL CONDITIONS FOR A SPECIFIC SITE. IF SITE CONDITIONS CAUSE INSTALLATION TO DEVIATE FROM THE REQUIREMENTS DETAILED HEREIN, A LICENSED ENGINEER OR ARCHITECT SHALL PREPARE SITE SPECIFIC DOCUMENTS FOR USE WITH THIS DOCUMENT.

HERMES F. NORERO  
FLORIDA P. E. NO. 73778  
398 E. DANIA BEACH BLVD., STE. 338  
DANIA BEACH, FL 33004  
FBPE CERT. OF AUTHORIZATION NO. 29578

**FL38755**

DATE: 10.06.2023

DWG. BY: SH  
CHK. BY: HFN

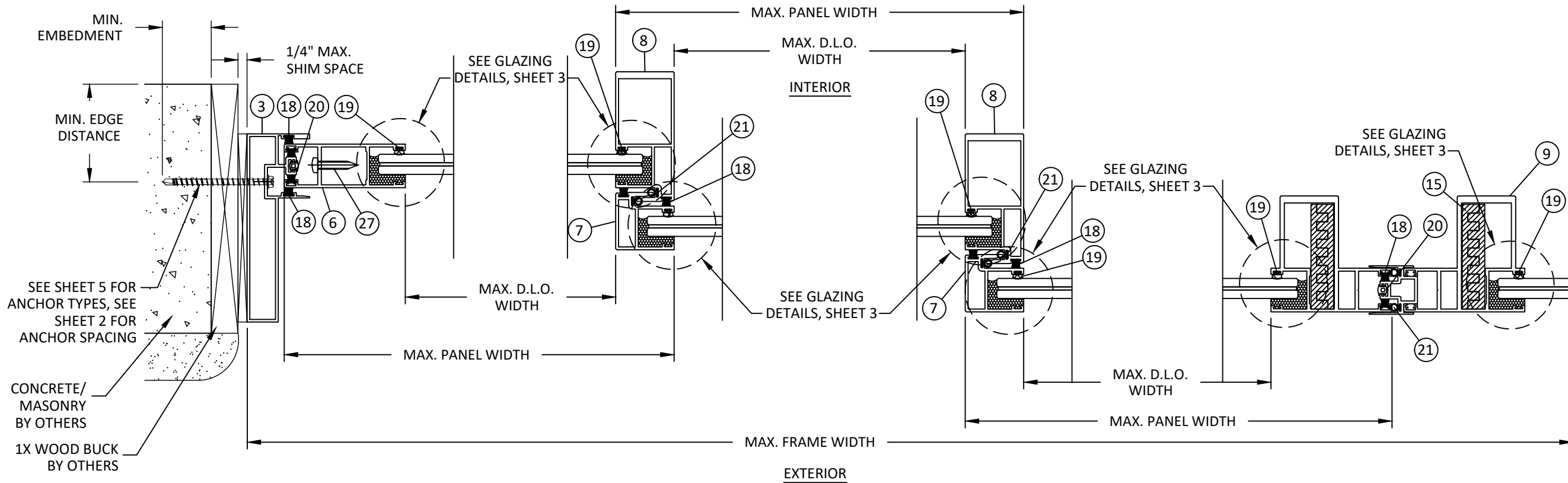
SCALE: NTS

DWG. #: LRA015

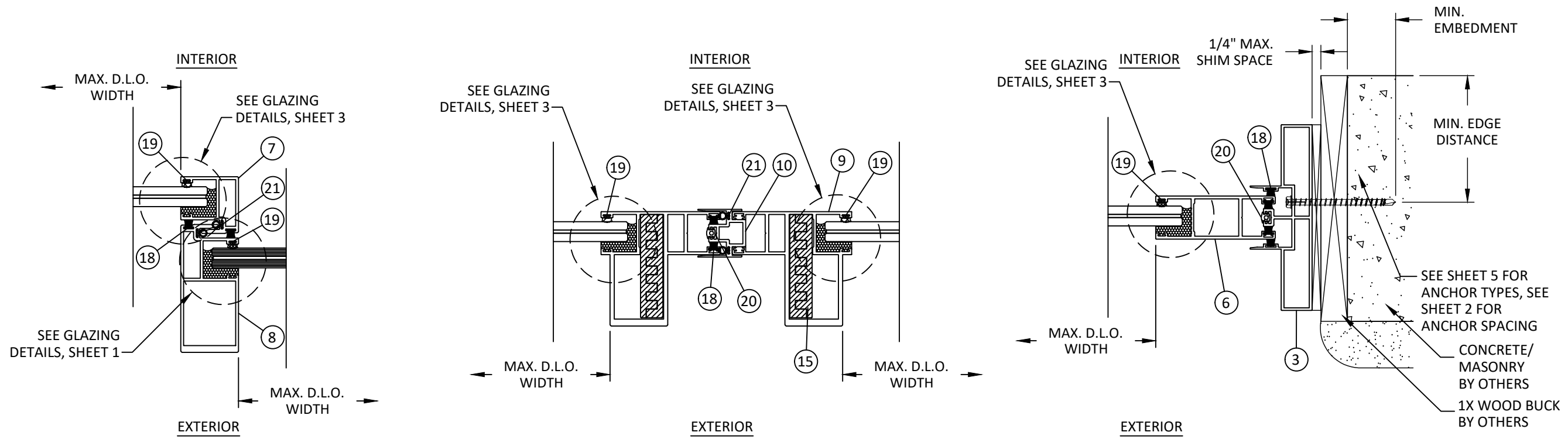
SHEET: OF 11

TITLE: LR-230 ALUMINUM SLIDING GLASS DOOR (HVHZ)/(IMPACT)  
HORIZONTAL SECTIONS

PREPARED BY: BUILDING DROPS, INC.  
398 E. DANIA BEACH BLVD., STE. 338  
DANIA BEACH, FL 33004  
PH: (954)399-8478  
FAX: (954)744-4738  
WEB: www.buildingdrops.com



**G** HORIZONTAL SECTION JAMB FIXED PANEL  
**H** HORIZONTAL SECTION INTERLOCK  
**I** HORIZONTAL SECTION INTERLOCK  
**J** HORIZONTAL SECTION MEETING STILE



**K** HORIZONTAL SECTION INTERLOCK  
**L** HORIZONTAL SECTION MEETING STILE  
**M** HORIZONTAL SECTION JAMB

REMARKS	BY	DATE

THE INSTALLATION DETAILS DESCRIBED HEREIN ARE GENERIC AND MAY NOT REFLECT ACTUAL CONDITIONS FOR A SPECIFIC SITE. IF SITE CONDITIONS CAUSE INSTALLATION TO DEVIATE FROM THE REQUIREMENTS DETAILED HEREIN, A LICENSED ENGINEER OR ARCHITECT SHALL PREPARE SITE SPECIFIC DOCUMENTS FOR USE WITH THIS DOCUMENT.

HERMES F. NORERO  
FLORIDA P. E. NO. 73778  
398 E. DANIA BEACH BLVD., STE. 338  
DANIA BEACH, FL 33004  
FBPE CERT. OF AUTHORIZATION NO. 29578

**FL38755**

DATE: 10.06.2023	
DWG. BY: SH	CHK. BY: HFN
SCALE: NTS	
DWG. #: LRA015	
SHEET: 7	OF 11

TITLE: LR-230 ALUMINUM SLIDING GLASS DOOR (HVHZ)/(IMPACT)  
HORIZONTAL SECTIONS

PREPARED BY: BUILDING DROPS, INC.  
398 E. DANIA BEACH BLVD., STE. 338  
DANIA BEACH, FL 33004  
PH: (954)399-8478  
FAX: (954)744-4738  
WEB: www.buildingdrops.com



REMARKS	BY	DATE

THE INSTALLATION DETAILS DESCRIBED HEREIN ARE GENERIC AND MAY NOT REFLECT ACTUAL CONDITIONS FOR A SPECIFIC SITE. IF SITE CONDITIONS CAUSE INSTALLATION TO DEVIATE FROM THE REQUIREMENTS DETAILED HEREIN, A LICENSED ENGINEER OR ARCHITECT SHALL PREPARE SITE SPECIFIC DOCUMENTS FOR USE WITH THIS DOCUMENT.

HERMES F. NORERO  
FLORIDA P. E. NO. 73778  
398 E. DANIA BEACH BLVD., STE. 338  
DANIA BEACH, FL 33004  
FBPE CERT. OF AUTHORIZATION NO. 29578

**FL38755**

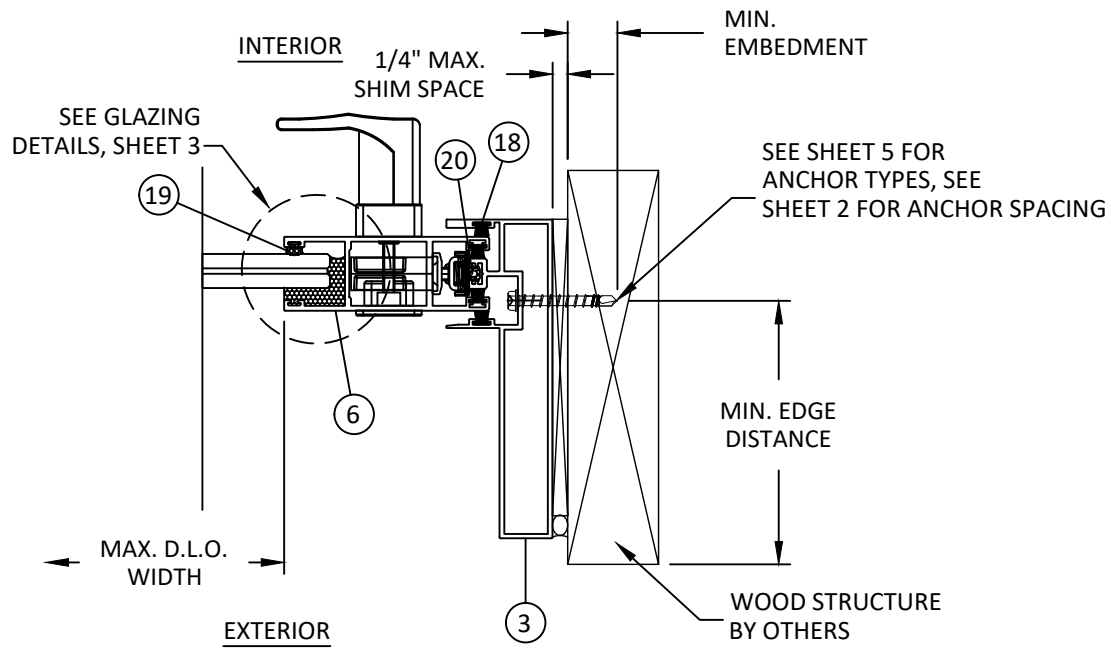
DATE: 10.06.2023

DWG. BY: <b>SH</b>	CHK. BY: <b>HFN</b>
-----------------------	------------------------

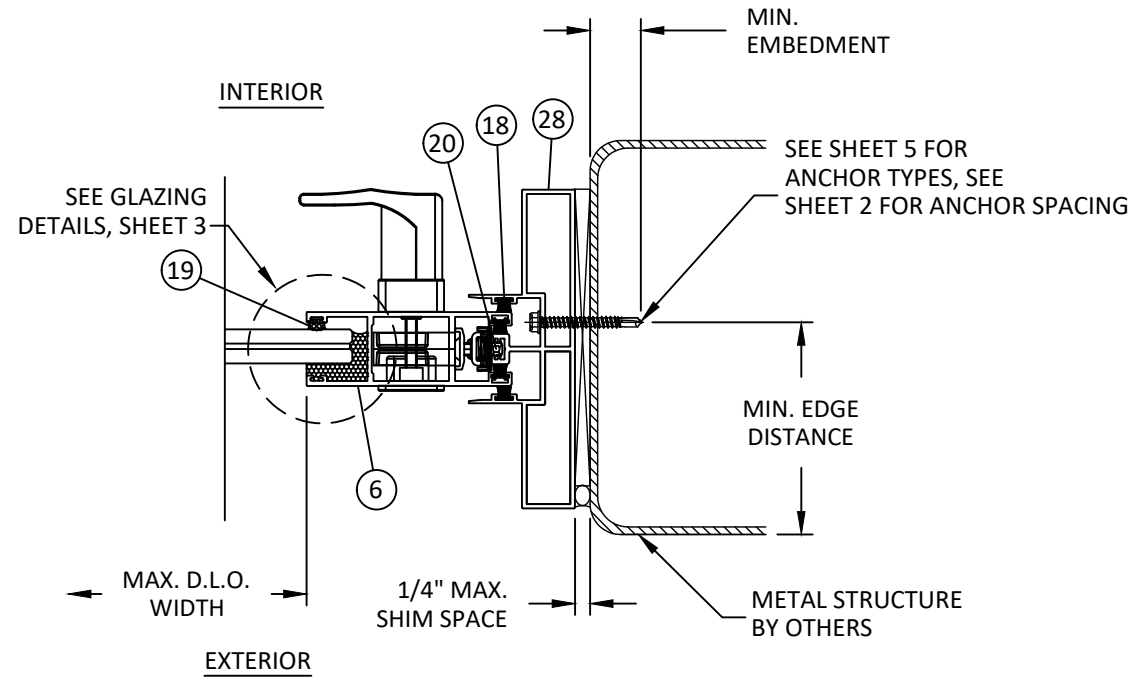
SCALE: **NTS**

DWG. #: **LRA015**

SHEET: **8** OF 11



**N**  
**8** HORIZONTAL SECTION  
JAMB



**O**  
**8** HORIZONTAL SECTION  
JAMB

# CORNER CONSTRUCTION

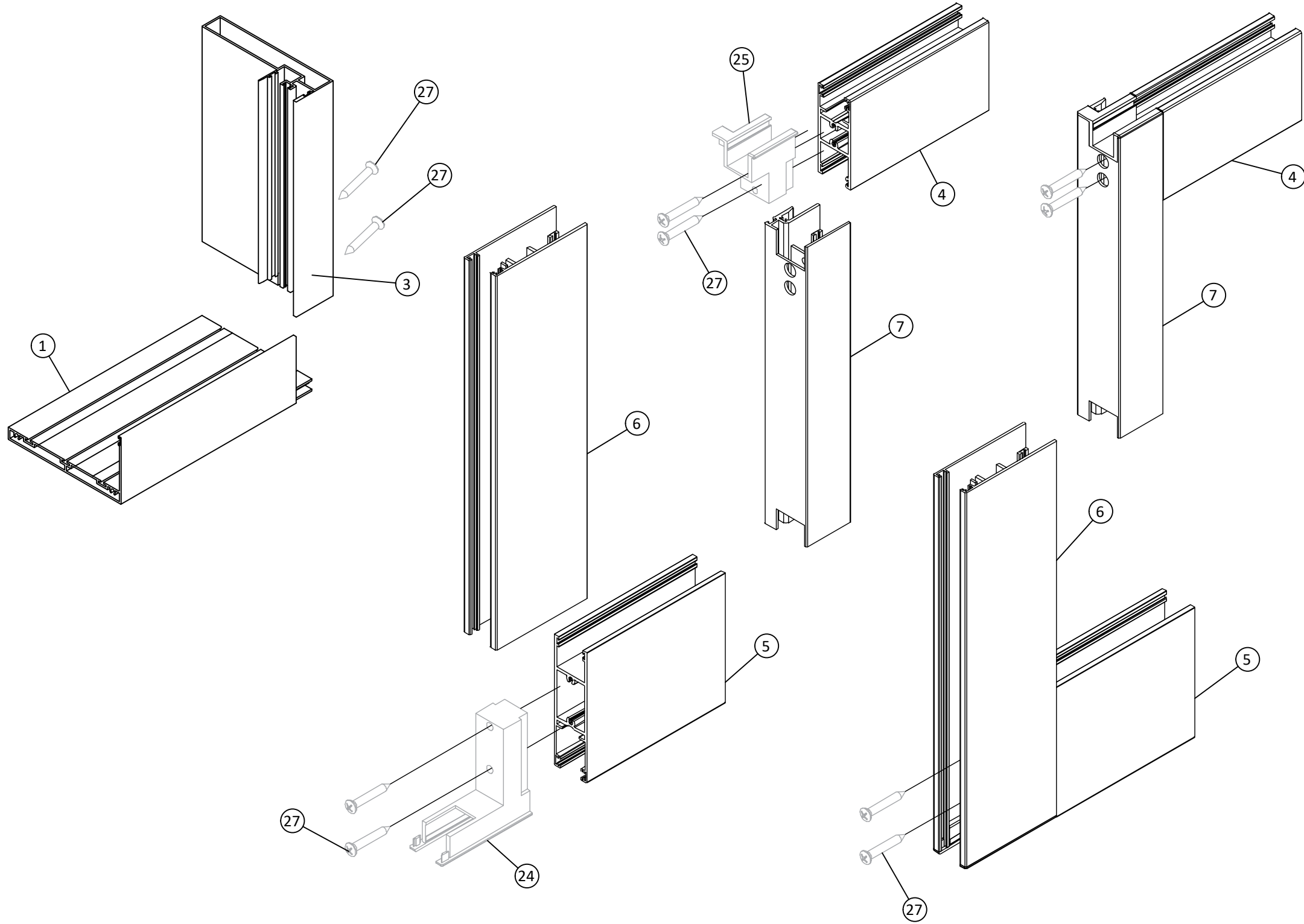
**LINEA ROSSA®**  
WINDOWS & DOORS

1850 NW. 84TH AVE., STE. 114  
DORAL, FL 33126  
PH: (305)815-8797

TITLE: LR-230 ALUMINUM SLIDING GLASS DOOR  
(HVHZ)/(IMPACT)  
CORNER CONSTRUCTION

CORNER CONSTRUCTION

PREPARED BY: BUILDING DROPS, INC.  
398 E. DANIA BEACH BLVD., STE. 338  
DANIA BEACH, FL 33004  
PH: (954)399-8478  
FAX: (954)744-4738  
WEB: www.buildingdrops.com



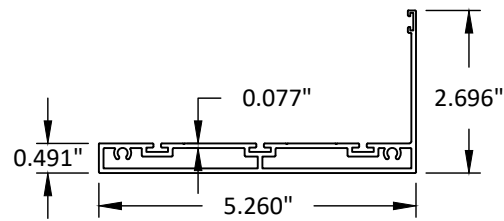
REMARKS	BY	DATE

THE INSTALLATION DETAILS DESCRIBED HEREIN ARE GENERIC AND MAY NOT REFLECT ACTUAL CONDITIONS FOR A SPECIFIC SITE. IF SITE CONDITIONS CAUSE INSTALLATION TO DEVIATE FROM THE REQUIREMENTS DETAILED HEREIN, A LICENSED ENGINEER OR ARCHITECT SHALL PREPARE SITE SPECIFIC DOCUMENTS FOR USE WITH THIS DOCUMENT.

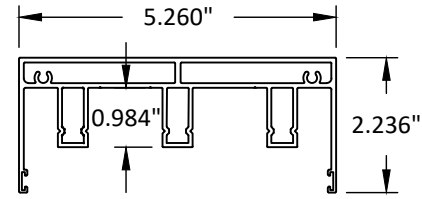
HERMES F. NORERO  
FLORIDA P. E. NO. 73778  
398 E. DANIA BEACH BLVD., STE. 338  
DANIA BEACH, FL 33004  
FBPE CERT. OF AUTHORIZATION NO. 29578

**FL38755**

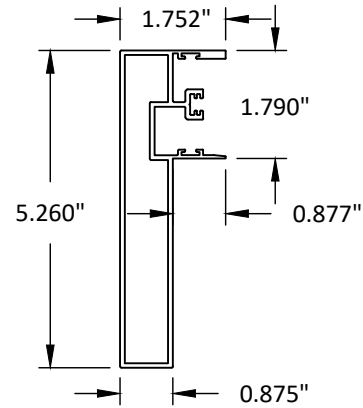
DATE: 10.06.2023	
DWG. BY: SH	CHK. BY: HFN
SCALE: NTS	
DWG. #: LRA015	
SHEET:	OF 11



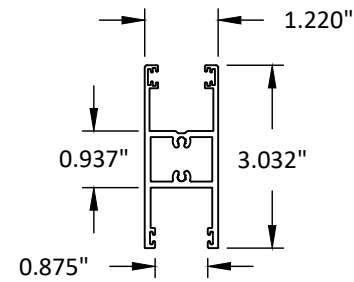
1 3 TRACK FRAME SILL  
ALUM. 6063-T6



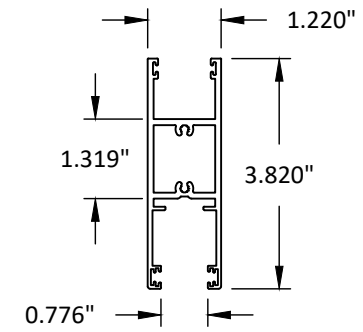
2 3 TRACK FRAME HEAD  
ALUM. 6063-T6



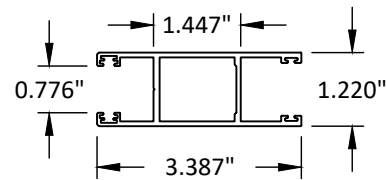
3 3 TRACK FRAME JAMB  
ALUM. 6063-T6



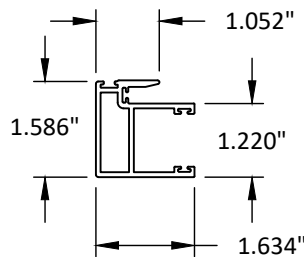
4 TOP SASH  
ALUM. 6063-T6



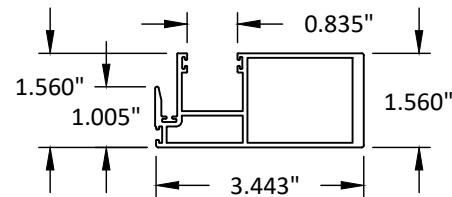
5 BOTTOM SASH  
ALUM. 6063-T6



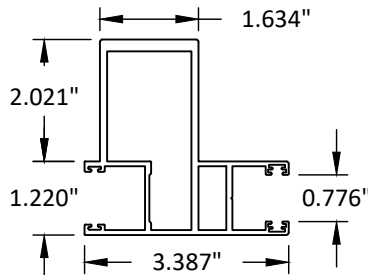
6 JAMB/LOCK SASH  
ALUM. 6063-T6



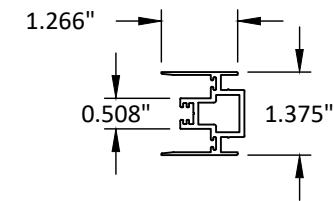
7 INTERLOCK STILE  
ALUM. 6063-T6



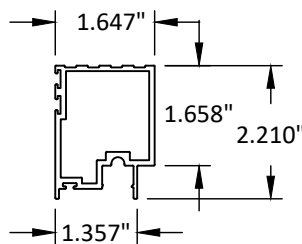
8 H.D. INTERLOCK STILE  
ALUM. 6063-T6



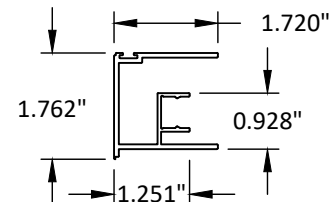
9 HEAVY LOCK STILE  
ALUM. 6063-T6



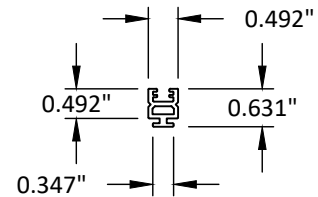
10 ASTRAGAL STILE  
ALUM. 6063-T6



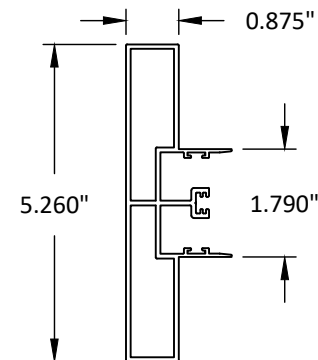
11 COVER PROFILE  
ALUM. 6063-T6



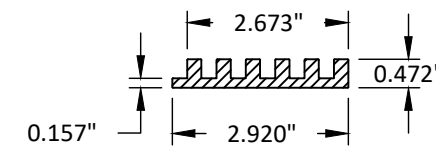
12 COVER PROFILE  
ALUM. 6063-T6



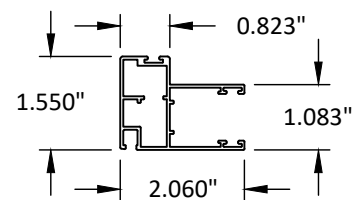
13 BOTTOM RAIL PROFILE  
ALUM. 6063-T6



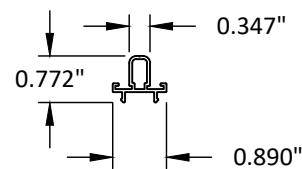
14 3 TRACK FRAME JAMB  
ALUM. 6063-T6



15 REINFORCEMENT  
ALUM. 6063-T6



16 FLY SCREEN SASH  
ALUM. 6063-T6



28 FLYSCREEN ASTRAGAL STILE  
ALUM. 6063-T6

TITLE: LR-230 ALUMINUM SLIDING GLASS DOOR (HVHZ)/(IMPACT)  
COMPONENTS

PREPARED BY: BUILDING DROPS, INC.

398 E. DANIA BEACH BLVD., STE. 338  
DANIA BEACH, FL 33004  
PH: (954)399-8478  
FAX: (954)744-4738  
WEB: www.buildingdrops.com



REMARKS	BY	DATE

THE INSTALLATION DETAILS DESCRIBED HEREIN ARE GENERIC AND MAY NOT REFLECT ACTUAL CONDITIONS FOR A SPECIFIC SITE. IF SITE CONDITIONS CAUSE INSTALLATION TO DEVIATE FROM THE REQUIREMENTS DETAILED HEREIN, A LICENSED ENGINEER OR ARCHITECT SHALL PREPARE SITE SPECIFIC DOCUMENTS FOR USE WITH THIS DOCUMENT.

HERMES F. NORERO  
FLORIDA P. E. NO. 73778  
398 E. DANIA BEACH BLVD., STE. 338  
DANIA BEACH, FL 33004  
FBPE CERT. OF AUTHORIZATION NO. 29578

**FL38755**

DATE: 10.06.2023

DWG. BY: SH  
CHK. BY: HFN

SCALE: NTS

DWG. #: LRA015

SHEET: OF 11

**BILL OF MATERIALS**

ITEM	PART NO.	DESCRIPTION	MATERIAL	MANF. / REMARKS
1	LR230-05	3 TRACK FRAME SILL	6063-T6	LINEA ROSSA
2	LR230-06	3 TRACK FRAME HEAD	6063-T6	LINEA ROSSA
3	LR230-08	3 TRACK FRAME JAMB	6063-T6	LINEA ROSSA
4	LR230-10	TOP SASH	6063-T6	LINEA ROSSA
5	LR230-11	BOTTOM SASH	6063-T6	LINEA ROSSA
6	LR230-12	JAMB/LOCK SASH	6063-T6	LINEA ROSSA
7	LR230-13	INTERLOCK STILE	6063-T6	LINEA ROSSA
8	LR230-14	H.H. INTERLOCK STILE	6063-T6	LINEA ROSSA
9	LR230-23	HEAVY LOCK STILE	6063-T6	LINEA ROSSA
10	LR230-19	ASTRAGAL STILE	6063-T6	LINEA ROSSA
11	LR230-09	COVER PROFILE	6063-T6	LINEA ROSSA
12	LR230-04	COVER PROFILE	6063-T6	LINEA ROSSA
13	LR230-15	BOTTOM RAIL PROFILE	6063-T6	LINEA ROSSA
14	LR230-07	3 TRACK FRAME JAMB	6063-T6	LINEA ROSSA
15	LR230-24	REINFORCEMENT INTERLOCKED (FULL LENGTH)	6063-T6	LINEA ROSSA
16	LR-230-21	FLY SCREEN SASH	6063-T6	LINEA ROSSA
17	B5611214	STAINLESS STEEL DRIVER	STAINLESS STEEL	LINEA ROSSA
18	B4711006	67X600 SEALING BRUSH TRI-FIN	POLYPROPYLENE	LINEA ROSSA
19	B5410091	GLAZING GASKET	EPDM	LINEA ROSSA
20	B4310022	GASKET FOR FRAME RAILS	EPDM	LINEA ROSSA
21	B4510092	SASH GASKET	EPDM	LINEA ROSSA
22	B1110205	SLIDING AND AD. CARRIAGE	ALUMINUM	LINEA ROSSA
23	B5410230	SASH FIXING PART	PVC	LINEA ROSSA
24	B2610230	90° W. CORNER WIDE JOINTS	PVC	LINEA ROSSA
25	B2610231	90° W. CORNER NARROW JOINTS	PVC	LINEA ROSSA
26	B2410003	SETTING BLOCK	EPDM	LINEA ROSSA
27	-	#10 X 1" PHP. PH. SMS. FRAME & PANEL ASSY SCREW.	STAINLESS STEEL	LINEA ROSSA
28	LR3130	FLYSCREEN ASTRAGAL STILE	6063-T6	LINEA ROSSA
29	LR230-16	BOTTOM FLYSCREEN RAIL	6063-T6	LINEA ROSSA
30	LR230-18	TOP FLYSCREEN RAIL	6063-T6	LINEA ROSSA
31	B1120206	SINGLE FLYSCREEN ROLLER	PVC	LINEA ROSSA

TITLE: LR-230 ALUMINUM SLIDING GLASS DOOR  
(HVHZ)/(IMPACT)  
BILL OF MATERIALS

PREPARED BY: BUILDING DROPS, INC.  
398 E. DANIA BEACH BLVD., STE. 338  
DANIA BEACH, FL 33004  
PH: (954)399-8478  
FAX: (954)744-4738  
WEB: www.buildingdrops.com



REMARKS	BY	DATE

THE INSTALLATION DETAILS DESCRIBED HEREIN ARE GENERIC AND MAY NOT REFLECT ACTUAL CONDITIONS FOR A SPECIFIC SITE. IF SITE CONDITIONS CAUSE INSTALLATION TO DEVIATE FROM THE REQUIREMENTS DETAILED HEREIN, A LICENSED ENGINEER OR ARCHITECT SHALL PREPARE SITE SPECIFIC DOCUMENTS FOR USE WITH THIS DOCUMENT.

HERMES F. NORERO  
FLORIDA P. E. NO. 73778  
398 E. DANIA BEACH BLVD., STE. 338  
DANIA BEACH, FL 33004  
FBPE CERT. OF AUTHORIZATION NO. 29578

**FL38755**

DATE: 10.06.2023

DWG. BY: <b>SH</b>	CHK. BY: <b>HFN</b>
-----------------------	------------------------

SCALE: **NTS**

DWG. #: **LRA015**

SHEET: **11** OF 11

**11**